

VORTAC HPW <b>112.0</b> Chan 57	APP CRS <b>252°</b>	Rwy Idg TDZE Apt Elev	<b>5002</b> <b>191</b> <b>193</b>
---------------------------------------	------------------------	-----------------------------	---

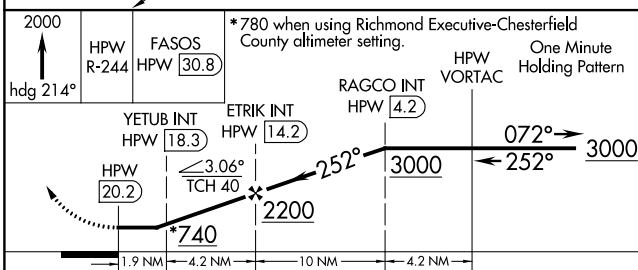
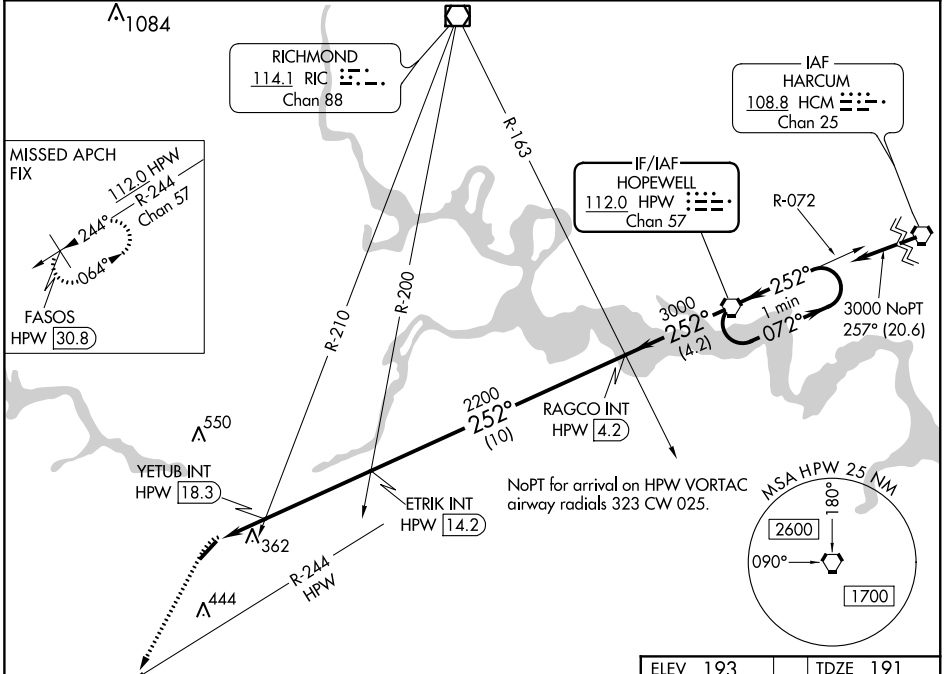
# VOR RWY 23

DINWIDDIE COUNTY (PTB)

**⚠** When local altimeter setting not received, use Richmond Executive-Chesterfield County altimeter setting and increase all MDA 40 feet; increase S-23 Cat C and Circling Cat C visibility 1/8 mile and YETUB fix minimums S-23 Cat C visibility 1/8 mile and Circling Cat C visibility 1/4 mile. DME required.

**MISSED APPROACH:** Climb to 2000 on heading 214° and HPW R-244 to FASOS/HPW 30.8 DME and hold.

AWOS-3 <b>133.325</b>	POTOMAC APP CON <b>126.75 307.2</b>	GCO <b>135.075</b>	UNICOM <b>122.7 (CTAF)</b> <b>📞</b>
--------------------------	--	-----------------------	--



ELEV 193	TDZE 191
----------	----------

252° 6.1 NM from FAF

MIRL Rwy 5-23 **📞**  
REIL Rwys 5 and 23 **📞**

FAF to MAP 6.1 NM

Knots	60	90	120	150	180
Min:Sec	6:06	4:04	3:03	2:26	2:02

CATEGORY	A	B	C	D
S-23	740-1	549 (600-1)	740-1 1/8 549 (600-1 1/8)	NA
<b>C</b> CIRCLING	740-1	547 (600-1)	760-1 1/8 567 (600-1 1/8)	NA
YETUB FIX MINIMUMS (DUAL VOR RECEIVERS OR DME REQUIRED)				
S-23	620-1	429 (500-1)	620-1 1/4 429 (500-1 1/4)	NA
<b>C</b> CIRCLING	680-1	487 (500-1)	760-1 1/2 567 (600-1 1/2)	NA

NE-3, 15 JUL 2021 to 12 AUG 2021

NE-3, 15 JUL 2021 to 12 AUG 2021