

WAAS CH <b>48923</b> <b>W14A</b>	APP CRS <b>143°</b>	Rwy Idg <b>5001</b> TDZE <b>22</b> Apt Elev <b>22</b>
--	------------------------	---

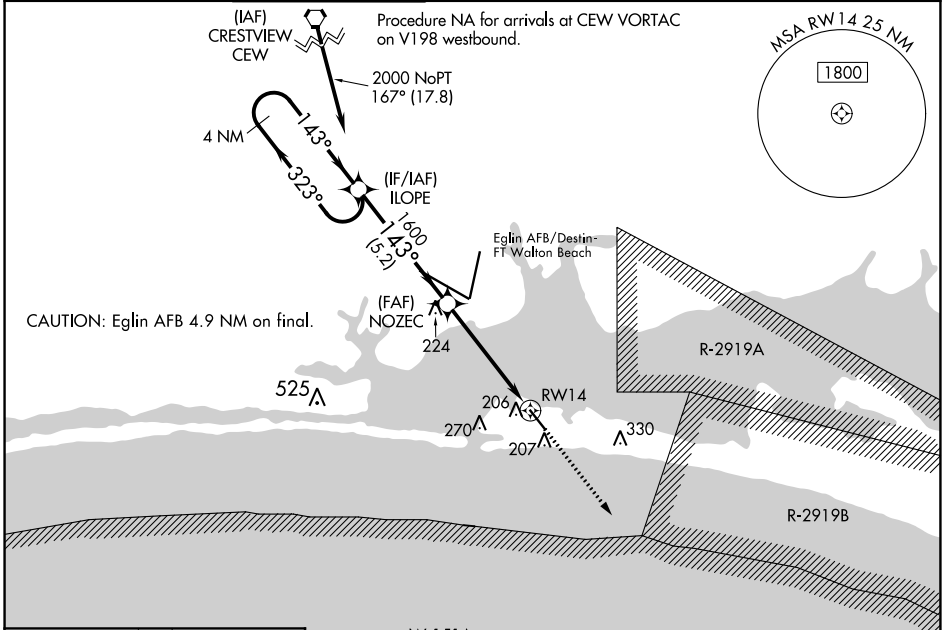
# RNAV (GPS) RWY 14

DESTIN EXEC (DTS)

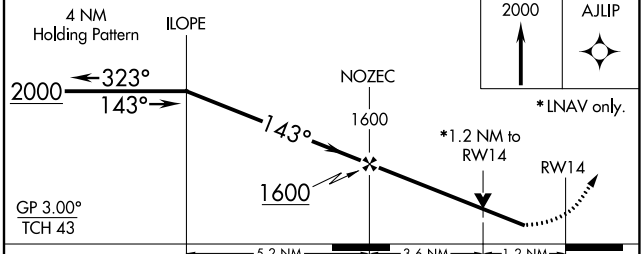
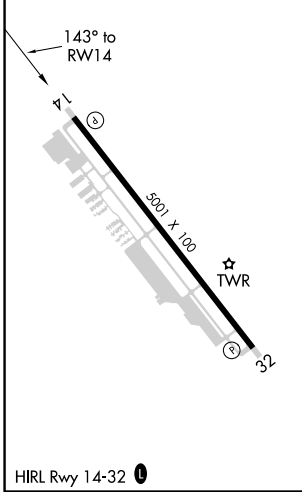
**⚠** For uncompensated Baro-VNAV systems, LNAV/VNAV NA below 0°C (32°F) or above 54°C (130°F).  
**⚠** Baro-VNAV and VDP NA when using Crestview altimeter setting. Rwy 14 helicopter visibility reduction below 3/4 SM NA. DME/DME RNP-0.3 NA. When local altimeter setting not received, use Crestview altimeter setting and increase all DA/MDA 80 feet; increase LPV all Cats visibility 1/2 SM, LNAV/VNAV all Cats visibility 3/8 SM, increase LNAV Cats C and D 1/2 SM, and Circling Cats C and D 1/4 SM.

**MISSED APPROACH:**  
 Climb to 2000 direct  
 AJLUP and hold.

ATIS <b>133.925</b>	EGLIN APP CON <b>132.1 360.6</b>	DESTIN TOWER ★ <b>118.45</b> (CTAF) <b>0</b>	GND CON <b>121.6</b>	CLNC DEL <b>121.6</b>	CLNC DEL <b>127.7 377.2</b> (When twr closed)	UNICOM <b>123.075</b>
------------------------	-------------------------------------	---	-------------------------	--------------------------	---	--------------------------



ELEV <b>22</b>	TDZE <b>22</b>
----------------	----------------



CATEGORY	A	B	C	D
LPV DA	272-1 250 (300-1)			
LNAV/VNAV DA	367-1 3/8 345 (400-1 1/8)			
LNAV MDA	460-1	438 (500-1)	460-1 1/4	438 (500-1 1/4)
<input checked="" type="checkbox"/> CIRCLING	580-1	558 (600-1)	680-1 3/4 658 (700-1 3/4)	680-2 658 (700-2)

SE-3, 15 JUL 2021 to 12 AUG 2021

SE-3, 15 JUL 2021 to 12 AUG 2021