

LOC/DME I-SVH 111.75 Chan 54 (Y)	APP CRS 285°	Rwy Idg 5456 TDZE 967 Apt Elev 968
---	------------------------	---

ILS Y or LOC Y RWY 28

STATESVILLE RGNL (SVH)

⚠ When local altimeter setting not received, use Lincolnton altimeter setting and increase ILS DA to 1219 and all MDA 60 feet; increase S-LOC 28 Cats C/D visibility 1/8 mile and Circling Cat C visibility 1/4 mile. VDP NA when using Lincolnton altimeter setting. For inop MALSRR when using Lincolnton altimeter setting, increase S-ILS 28 all Cats visibility to 3/8 mile and S-LOC 28 Cats C/D visibility to 1 mile. DME required.

MALSRR

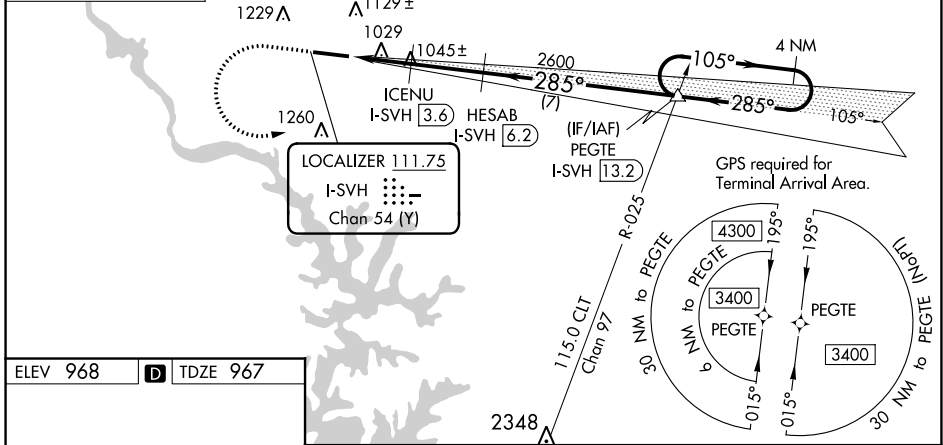


MISSED APPROACH: Climb to 1700 then climbing left turn to 3400 on heading 105° and on CLT VOR/DME R-025 to PEGTE INT/I-SVH 13.2 DME and hold.

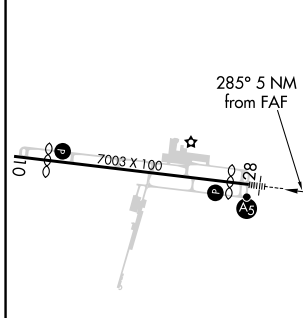
AWOS-3 119.225	ATLANTA CENTER 125.15 263.0	UNICOM 123.075 (CTAF)
--------------------------	---------------------------------------	---------------------------------

ALTERNATE MISSED APCH FIX

BARRETS MOUNTAIN BZM
110.8
Chan 45



ELEV 968	D	TDZE 967
----------	----------	----------



1700 3400 CLT R-025 PEGTE VGSI and ILS glidepath not coincident (VGSI Angle 3.00/TCH 50).

285° 5 NM from FAF

hdg 105°

***LOC only.**

ICENU I-SVH [3.6] 2600 PEGTE I-SVH [13.2] 4 NM Holding Pattern

I-SVH [1.2] HESAB I-SVH [6.2]

285° 105° 3400

GS 3.00° TCH 50

0.8 1.6 2.6 NM 7 NM

CATEGORY	A	B	C	D
S-ILS 28	1167-1/2		200 (200-1/2)	
S-LOC 28	1280-1/2		313 (400-1/2)	
C CIRCLING	1420-1 452 (500-1)	1540-1 572 (600-1)	1540-1/2 572 (600-1/2)	1560-2 592 (600-2)

SE-2, 15 JUL 2021 to 12 AUG 2021

SE-2, 15 JUL 2021 to 12 AUG 2021