


LOC/DME I-SVH <b>111.75</b> Chan <b>54 (Y)</b>	APP CRS <b>285°</b>	Rwy Idg <b>5456</b> TDZE <b>967</b> Apt Elev <b>968</b>
--	------------------------	---


# ILS Z or LOC Z RWY 28

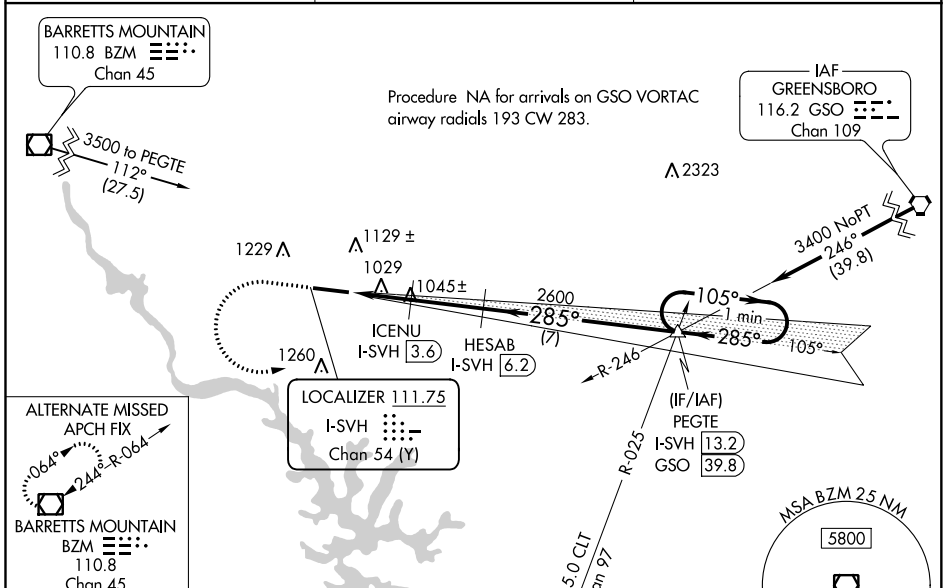
STATESVILLE RGNL (SVH)

**⚠** When local altimeter setting not received, use Lincolnton altimeter setting and increase ILS DA to 1219 and all MDA 60 feet; increase S-LOC 28 Cats C/D visibility 1/8 mile and Circling Cat C visibility 1/4 mile. VDP NA when using Lincolnton altimeter setting. For inop MALSRR when using Lincolnton altimeter setting, increase S-ILS 28 all Cats visibility to 3/8 mile and S-LOC 28 Cats C/D visibility to 1 mile. DME required.

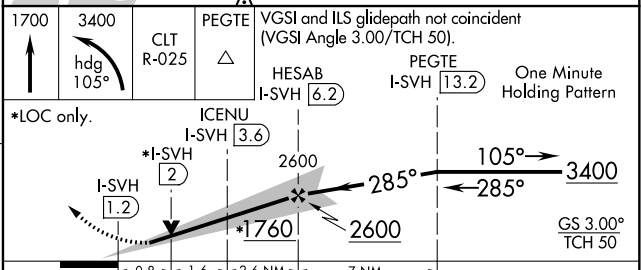
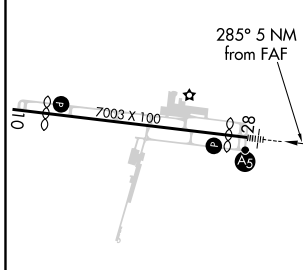
**MALSRR**  


**MISSED APPROACH:** Climb to 1700 then climbing left turn to 3400 on heading 105° and CLT VOR/DME R-025 to PEGTE INT/I-SVH 13.2 DME and hold.

AWOS-3 <b>119,225</b>	ATLANTA CENTER <b>125,15 263,0</b>	UNICOM <b>123,075 (CTAF)</b> 
--------------------------	---------------------------------------	---



ELEV 968	<b>D</b>	TDZE 967
----------	----------	----------



CATEGORY	A	B	C	D
S-ILS 28	1167-1/2		200 (200-1/2)	
S-LOC 28	1280-1/2		313 (400-1/2)	
<b>C</b> CIRCLING	1420-1 452 (500-1)	1540-1 572 (600-1)	1540-1/2 572 (600-1/2)	1560-2 592 (600-2)

SE-2, 15 JUL 2021 to 12 AUG 2021

SE-2, 15 JUL 2021 to 12 AUG 2021