

WAAS CH <b>99435</b> <b>W10A</b>	APP CRS <b>105°</b>	Rwy Idg TDZE <b>968</b> Apt Elev <b>968</b>
--	------------------------	---

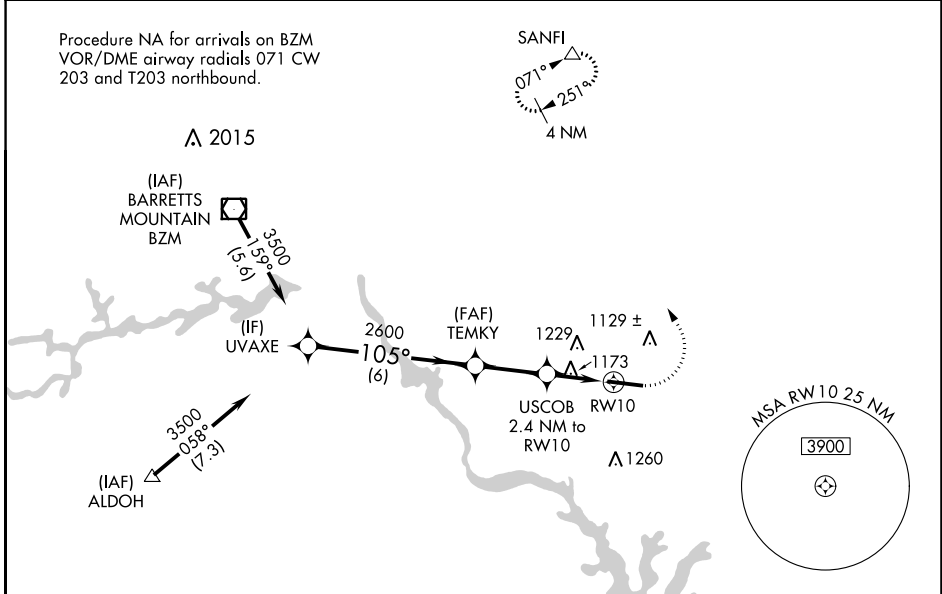
# RNAV (GPS) RWY 10

STATESVILLE RGNL (SVH)

**⚠** Baro-VNAV NA when using Lincoln ton altimeter setting. For uncompensated Baro-VNAV systems, LNAV/VNAV NA below -1.6°C (4°F) or above 54°C (130°F). DME/DME RNP-0.3 NA.  
**⚠** Rwy 10 helicopter visibility reduction below ¼ SM NA. When local altimeter setting not received, use Lincoln ton altimeter setting and increase LPV DA to 1263, LNAV/VNAV DA to 1431, and all MDA 60 feet; increase LNAV/VNAV all Cats, LNAV Cats C/D, and Circling Cat C visibility ¼ mile.

**MISSED APPROACH:** Climb to 1440 then climbing left turn to 3400 direct SANFI and hold.

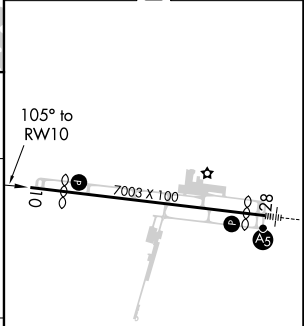
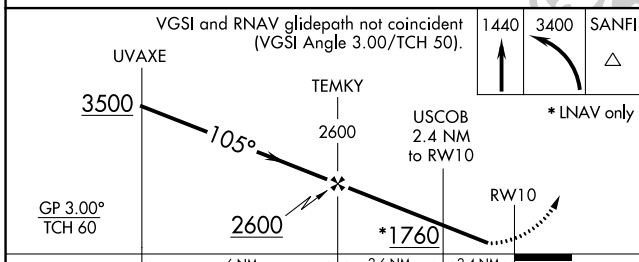
AWOS-3 <b>119.225</b>	ATLANTA CENTER <b>125.15 263.0</b>	UNICOM <b>123.075 (CTAF) 0</b>
--------------------------	---------------------------------------	-----------------------------------



SE-2, 15 JUL 2021 to 12 AUG 2021

SE-2, 15 JUL 2021 to 12 AUG 2021

ELEV 968	<b>D</b> TDZE 968
----------	-------------------



CATEGORY	A	B	C	D
LPV DA		1218-1	250 (300-1)	
LNAV/VNAV DA		1386-1 3/8	418 (500-1 3/8)	
LNAV MDA	1440-1	472 (500-1)	1440-1 3/8	472 (500-1 3/8)
<b>C</b> CIRCLING	1440-1 472 (500-1)	1540-1 572 (600-1)	1540-1 1/2 572 (600-1 1/2)	1560-2 592 (600-2)

REIL Rwy 10 **0**  
 HIRL Rwy 10-28 **0**