


WAAS CH <b>60903</b> <b>W28A</b>	APP CRS <b>285°</b>	Rwy Idg TDZE <b>967</b> Apt Elev <b>968</b>	<b>5456</b>
--	------------------------	---	-------------

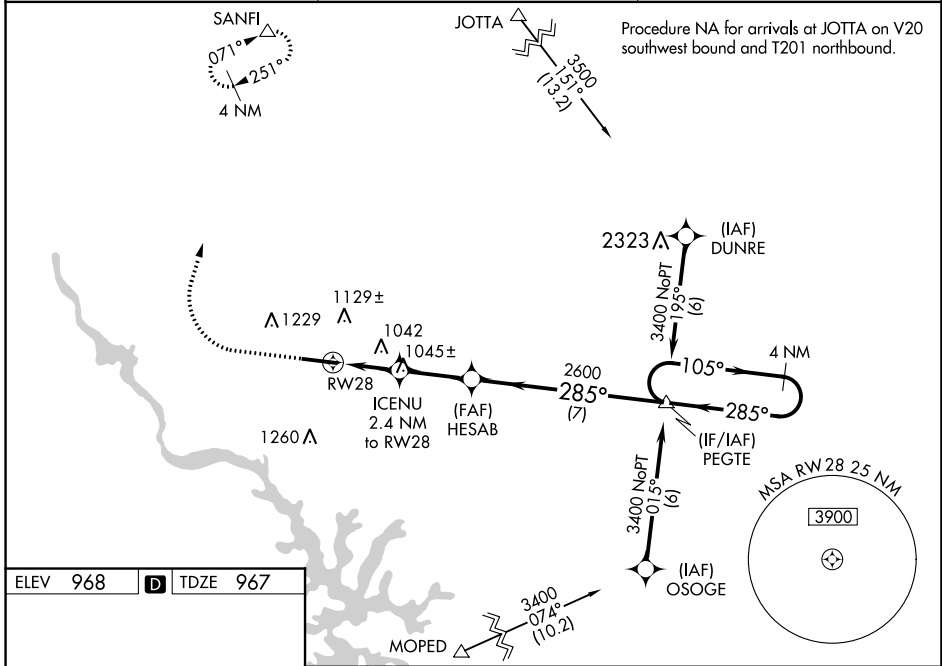
# RNAV (GPS) RWY 28

STATESVILLE RGNL (SVH)

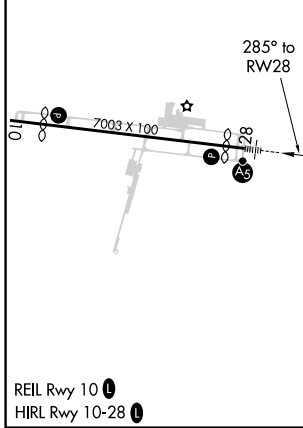
**⚠** For uncompensated Baro-VNAV systems, LNAV/VNAV NA below -16°C (4°F) or above 54°C (130°F). DME/DME RNP-0.3 NA. When local altimeter setting not received, use Lincoln ton altimeter setting and increase LPV DA to 1218, LNAV/VNAV DA to 1269, and all MDA 60 feet; increase LNAV/VNAV all Cats and LNAV Cats C/D visibility 1/8, and Circling Cat C 1/4 mile. VDP and Baro-VNAV NA when using Lincoln ton altimeter setting. For inop MALS R, increase LNAV/VNAV all Cats and LNAV Cats C/D visibility to 7/8 mile. For inop MALS R when using Lincoln ton altimeter setting, increase LNAV/VNAV all Cats and LNAV Cats C/D visibility to 1 mile.

**MALS R**  
  
**MISSED APPROACH:**  
 Climb to 1380 then climbing right turn to 3400 direct SANFI and hold.

AWOS-3 <b>119.225</b>	ATLANTA CENTER <b>125.15 263.0</b>	UNICOM <b>123.075 (CTAF) 0</b>
--------------------------	---------------------------------------	-----------------------------------



ELEV 968	<b>D</b>	TDZE 967
----------	----------	----------



1380	3400	SANFI	VGSI and RNAV glidepath not coincident (VGSI Angle 3.00/TCH 50).	4 NM Holding Pattern
*LNAV only.		ICENU 2.4 NM to RWY 28	HESAB 2600	PEGTE
*0.9 NM to RWY 28			2600	3400
0.9 NM		1.5 NM	2.6 NM	7 NM
GP 3.00°		TCH 50		

CATEGORY	A	B	C	D
LPV DA		1167-3/4	200 (200-3/4)	
LNAV/VNAV DA		1218-3/4	251 (300-3/4)	
LNAV MDA		1300-3/4	333 (400-3/4)	
<b>C</b> CIRCLING	1420-1 452 (500-1)	1540-1 572 (600-1)	1540-1 1/2 572 (600-1 1/2)	1560-2 592 (600-2)

SE-2, 15 JUL 2021 to 12 AUG 2021

SE-2, 15 JUL 2021 to 12 AUG 2021