

WAAS CH <b>61234</b> <b>W23A</b>	APP CRS <b>232°</b>	Rwy Idg TDZE <b>1523</b> Apt Elev <b>1545</b>	<b>5506</b>
--	------------------------	---	-------------

# RNAV (GPS) RWY 23

SCOTT MUNI (SCX)

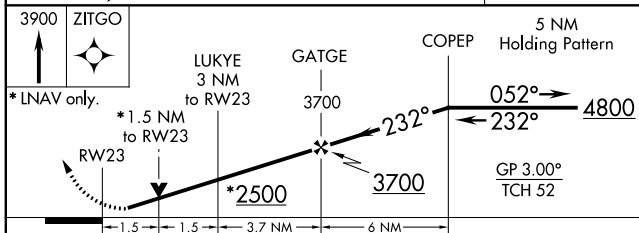
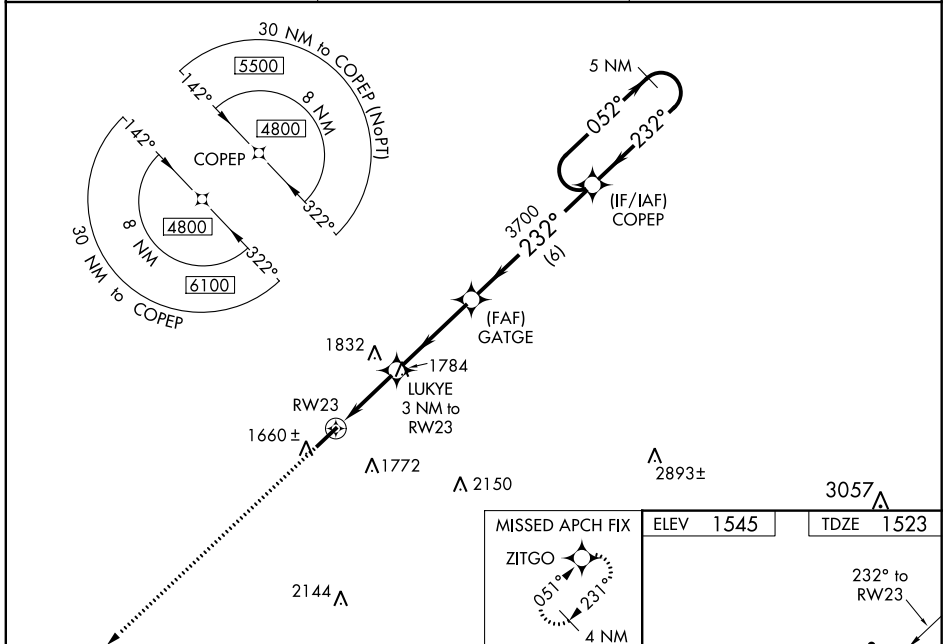
**▼**  
**▲NA**

Night landing: Rwy 5 NA. For uncompensated Baro-VNAV systems, LNAV/VNAV NA below -18°C (0°F) or above 54°C (130°F). DME/DME RNP-0.3 NA. When local altimeter setting not received, use Monticello altimeter setting: increase LPV all Cats DA to 2005 feet, LNAV/VNAV all Cats DA to 2153 feet, LPV visibility ½ mile, LNAV/VNAV ⅓ mile; increase all MDA 240 feet and LNAV Cat C/D visibility ⅓ mile, Circling Cat B ¼ mile, Circling Cat C 1 mile and Circling Cat D ¾ mile. Inop table does not apply to LPV and LNAV all Cats. For inop ODALS, increase LNAV/VNAV Cat D visibility to 1 ⅓ mile. For inop ODALS when using Monticello altimeter setting, increase LPV all Cats visibility to 1 ⅓ mile, LNAV/VNAV all Cats to 2 ½ mile. When using Monticello altimeter setting, inop table does not apply to LNAV Cats A/C/D. VDP and Baro-VNAV NA when using Monticello altimeter setting.

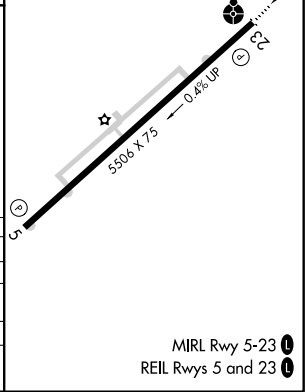
**ODALS**

**MISSED APPROACH:**  
Climb to 3900 direct ZITGO and hold.

AWOS-3 <b>135.025</b>	INDIANAPOLIS CENTER <b>124.625 371.925</b>	UNICOM <b>122.8 (CTAF)</b>
--------------------------	---	-------------------------------



CATEGORY	A	B	C	D
LPV DA	1773-1		250 (300-1)	
LNAV/ VNAV	1921-1 ½		398 (400-1 ½)	
LNAV MDA	2040-1	517 (500-1)	2040-1 ⅓	517 (500-1 ½)
<b>C</b> CIRCLING	2040-1	495 (500-1)	2200-1 ¾	2260-2 ¼
			655 (700-1 ¾)	715 (800-2 ¼)



SE-1, 15 JUL 2021 to 12 AUG 2021

SE-1, 15 JUL 2021 to 12 AUG 2021