

WAAS CH <b>90434</b> <b>W05A</b>	APP CRS <b>051°</b>	Rwy Idg TDZE Apt Elev	<b>5506</b> <b>1545</b> <b>1545</b>
--	------------------------	-----------------------------	---

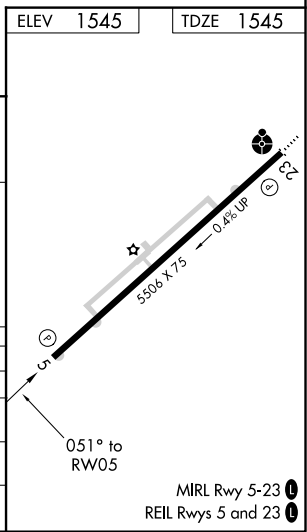
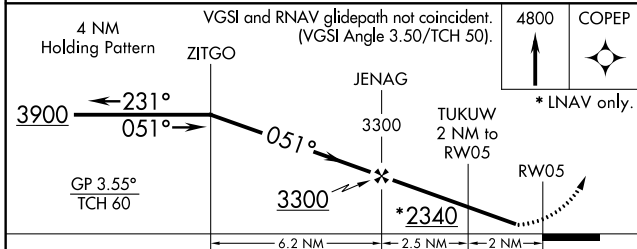
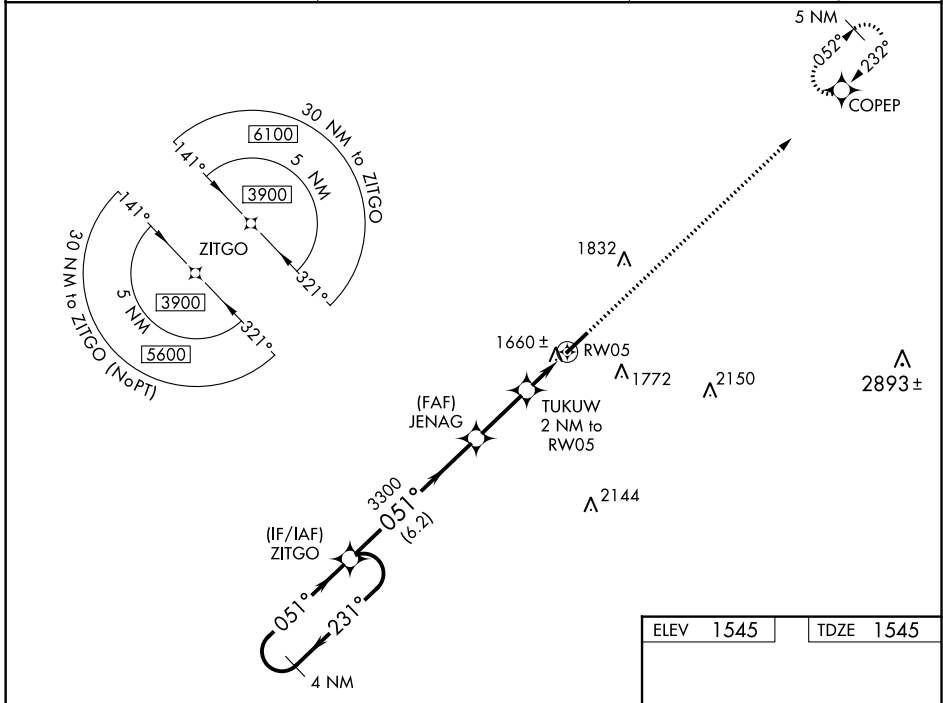
# RNAV (GPS) RWY 5

SCOTT MUNI (SCX)

**⚠ NA** Baro-VNAV NA when using Monticello altimeter setting. For uncompensated Baro-VNAV systems, LNAV/VNAV NA below -18°C (0°F) or above 47°C (118°F). DME/DME RNP-0.3 NA. When local altimeter setting not received, use Monticello altimeter setting: increase LPV DA to 2180 feet, LNAV/VNAV DA to 2092 feet and all visibilities ¾ mile; increase all MDA 240 feet and LNAV Cat C visibility ¾ mile and Circling Cat C 1 mile. Night landing: Rwy 5 NA. Helicopter visibility reduction below 1 SM NA.

**MISSED APPROACH:**  
Climb to 4800 direct COPEP and hold.

AWOS-3 <b>135.025</b>	INDIANAPOLIS CENTER <b>124.625 371.925</b>	UNICOM <b>122.8 (CTAF) 0</b>
--------------------------	---	---------------------------------



CATEGORY	A	B	C	D
LPV DA	1948-1 1/8 403 (500-1 1/8)			NA
LNAV/VNAV DA	1860-1 315 (400-1)			NA
LNAV MDA	1960-1 415 (500-1)	1960-1 1/8 415 (500-1 1/8)		NA
<b>C</b> CIRCLING	2040-1 495 (500-1)	2200-1 3/4 655 (700-1 3/4)		NA

SE-1, 15 JUL 2021 to 12 AUG 2021

SE-1, 15 JUL 2021 to 12 AUG 2021

MIRL Rwy 5-23 **0**  
REIL Rws 5 and 23 **0**