

LINDZ NINE DEPARTURE

AL-5889 (FAA)

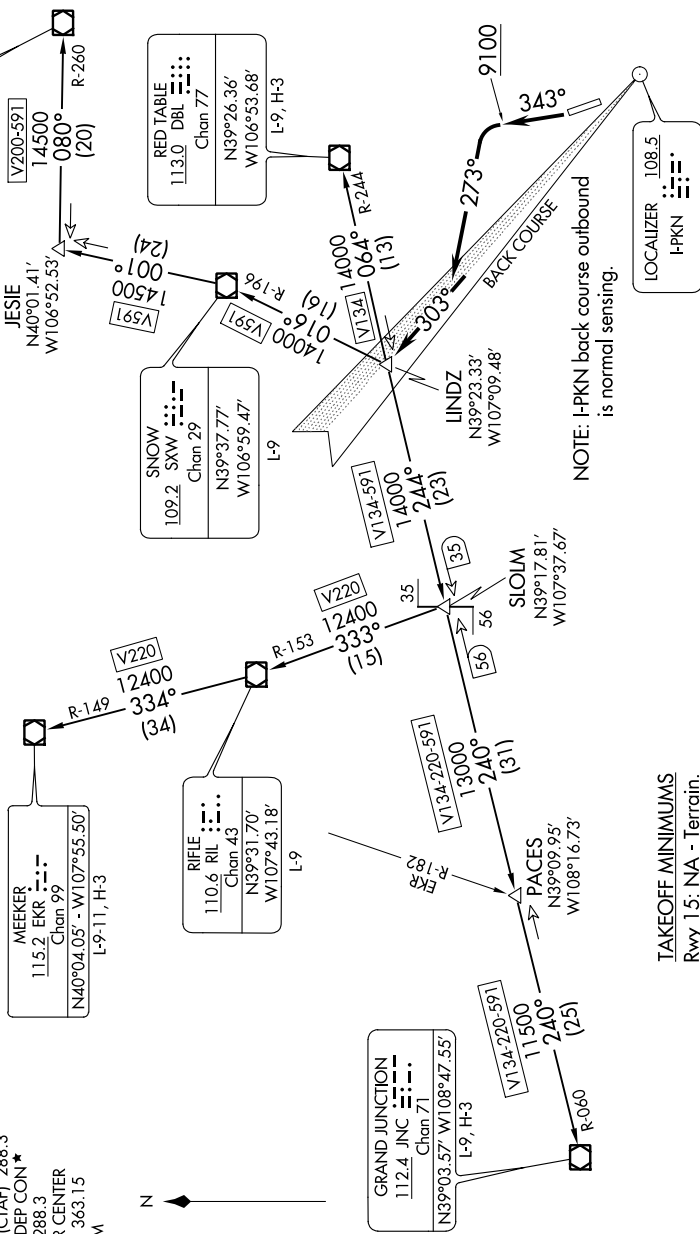
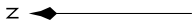
ASPEN-PITKIN COUNTY/SARDY FLD (ASE)

ASPEN, COLORADO

SW-1, 15 JUL 2021 to 12 AUG 2021

**TOP ALTITUDE:
16000**

- ATIS 120.4
- CINC DEL 123.75
- GND CON 121.9
- ASPEN TOWER* 118.85 (CTAF) 288.3
- ASPEN DEP CON* 123.8 288.3
- DENVER CENTER 119.85 363.15
- UNICOM 122.95



TAKEOFF MINIMUMS

Rwy 15: NA - Terrain.

Rwy 33: 400-1 with minimum climb of 465' per NM to 10000.

NOTE: Chart not to scale.

(NARRATIVE ON FOLLOWING PAGE)

SW-1, 15 JUL 2021 to 12 AUG 2021

LINDZ NINE DEPARTURE

(LINDZ9.LINDZ) 19JUL18

ASPEN, COLORADO

ASPEN-PITKIN COUNTY/SARDY FLD (ASE)