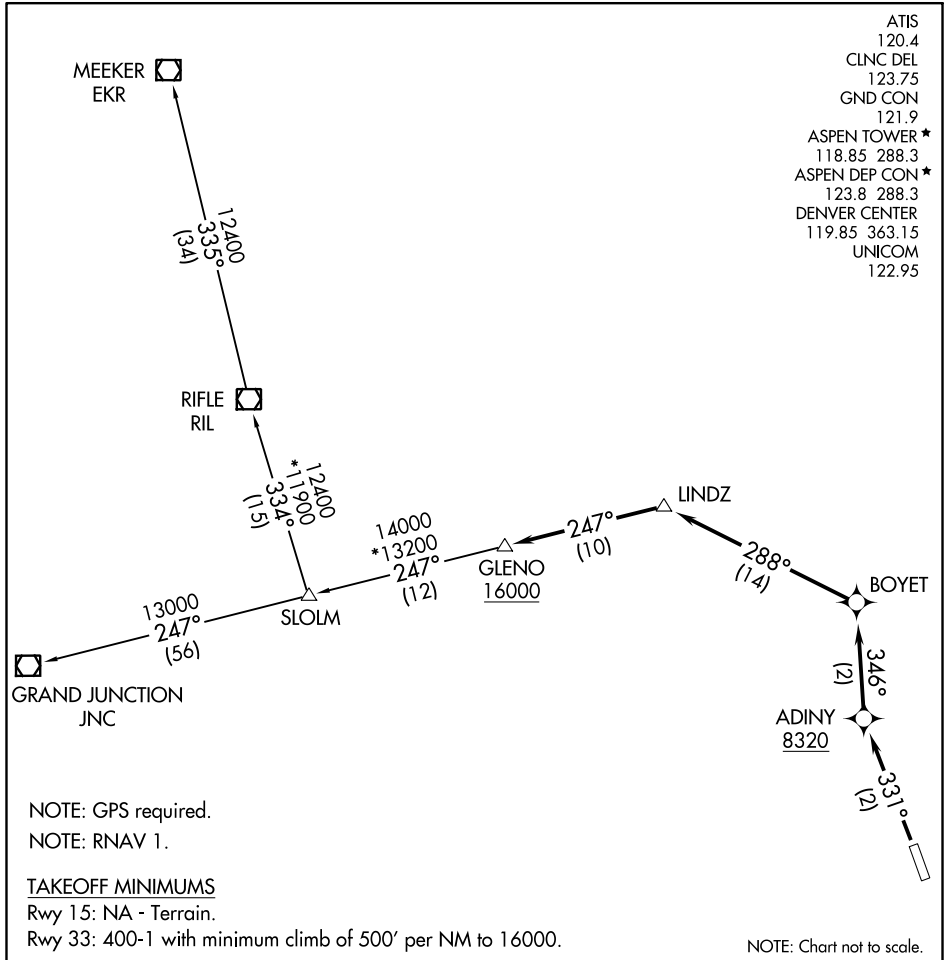


(PITKN4.GLENO) 21168

PITKN FOUR DEPARTURE (RNAV)

ASPEN-PITKIN COUNTY/SARDY FLD (A5E)
AL-5889 (FAA) ASPEN, COLORADO



SW-1, 15 JUL 2021 to 12 AUG 2021

SW-1, 15 JUL 2021 to 12 AUG 2021

DEPARTURE ROUTE DESCRIPTION

TAKEOFF RUNWAY 33: Climb heading 331° to at or above 8320 direct ADINY, and climbing right turn to 16000 on track 346° to BOYET, and on track 288° to LINDZ, and on track 247° to GLENO, thence. . . .

. . . .via transition or assigned route, expect clearance to filed altitude 10 minutes after departure.

GRAND JUNCTION TRANSITION (PITKN4.JNC)
MEEKER TRANSITION (PITKN4.EKR)
RIFLE TRANSITION (PITKN4.RIL)

PITKN FOUR DEPARTURE (RNAV)
(PITKN4.GLENO) 15NOV12

ASPEN, COLORADO
ASPEN-PITKIN COUNTY/SARDY FLD (A5E)