

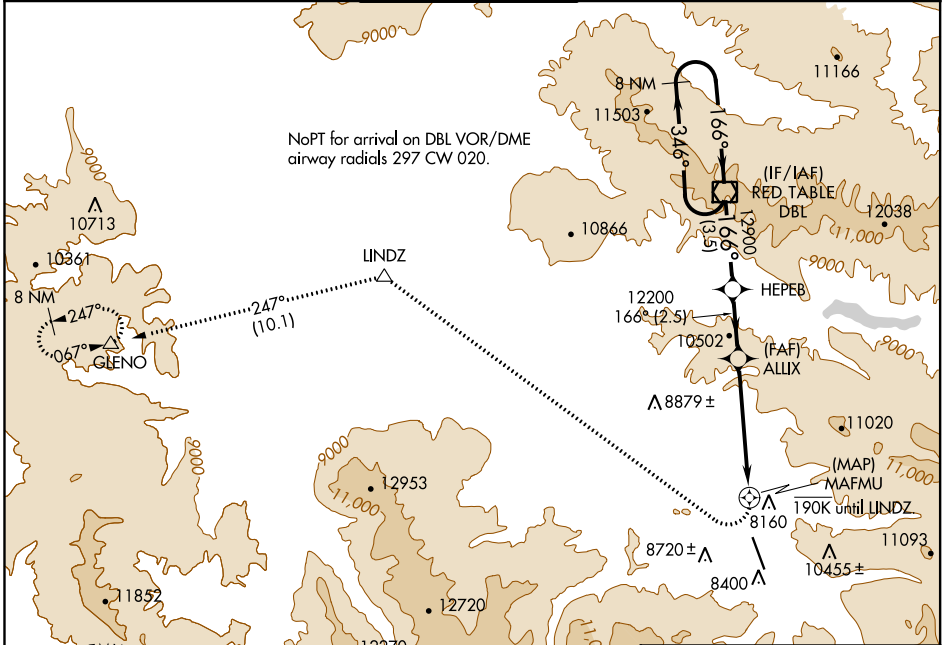
APP CRS	Rwy ldg TDZE	N/A
166°	Apt Elev	7837

RNAV (GPS)-F

ASPEN-PITKIN COUNTY/SARDY FLD (ASE)

	When local altimeter setting not received, procedure NA.	MISSED APPROACH: Climbing right turn to 14000 direct LINDZ and on track 247° to GLENO and hold.
	DME/DME RNP-0.3 NA. Visibility reduction by helicopters NA. Procedure NA at night.	

ATIS	ASPEN APP CON *	ASPEN TOWER *	GND CON	CLNC DEL	UNICOM
120.4	123.8 288.3	118.85 (CTAF) 288.3	121.9	123.75	122.95

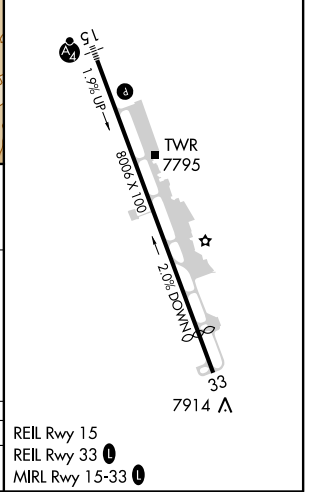


SW-1, 15 JUL 2021 to 12 AUG 2021

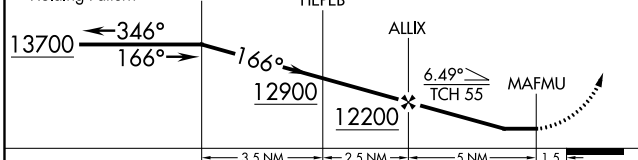
SW-1, 15 JUL 2021 to 12 AUG 2021



ELEV	7837	D
------	------	---



VGSIs and descent angles not coincident (VGSi Angle 3.50/TCH 56).			
14000	LINDZ	tr 247°	GLENO
	△		△



CATEGORY	A	B	C	D
CIRCLING	10200-1 ³ / ₄	2363 (2400-1 ³ / ₄)	10220-3 2383 (2400-3)	NA

REIL Rwy 15	
REIL Rwy 33	①
MIRL Rwy 15-33	①