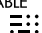
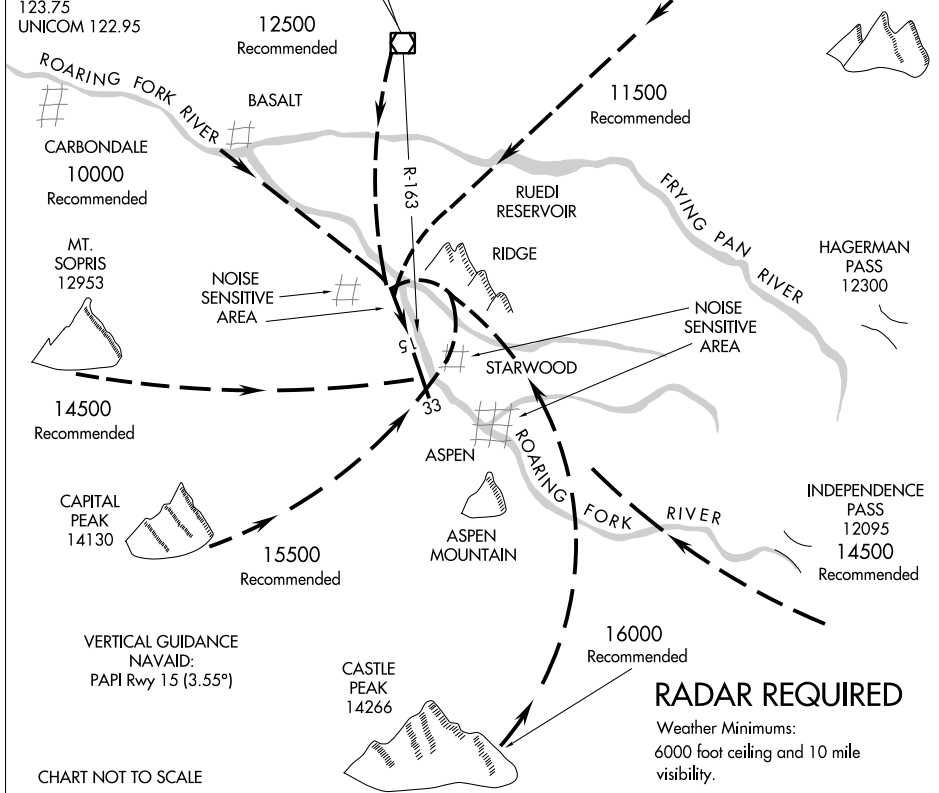


ROARING FORK VISUAL RWY 15

ASPEN-PITKIN COUNTY/SARDY FLD (A5E)
ASPEN, COLORADO

ATIS 120.4
 ASPEN APP CON *
 123.8 288.3
 ASPEN TOWER *
 118.85 (CTAF) 288.3
 GND CON
 121.9
 CLNC DEL
 123.75
 UNICOM 122.95

RED TABLE
 113.0 DBL 
 Chan 77



SW-1, 15 JUL 2021 to 12 AUG 2021

SW-1, 15 JUL 2021 to 12 AUG 2021

CHART NOT TO SCALE

ROARING FORK VISUAL RWY 15

Procedure not authorized at night.

When visual approaches to Runway 15 are in progress, clearances will be given utilizing in part the following phraseology:

"(IDENT) cleared for a ROARING FORK VISUAL Approach to Runway 15."

ROARING FORK VISUAL RWY 15