

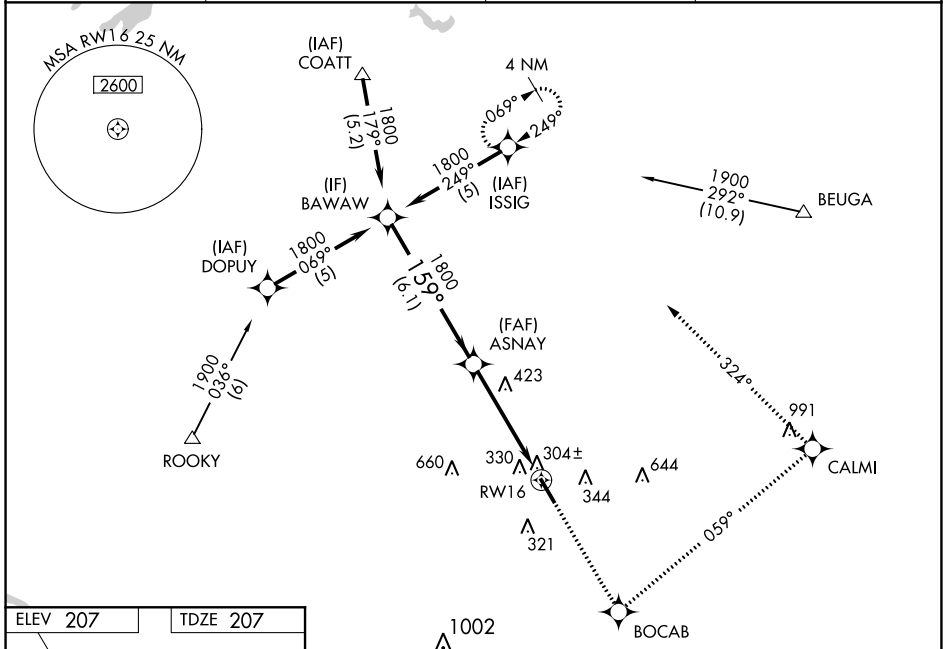
WAAS CH <b>42904</b> <b>W16A</b>	APP CRS <b>159°</b>	Rwy ldg TDZE Apt Elev	<b>5402</b> <b>207</b> <b>207</b>
--	------------------------	-----------------------------	---

# RNAV (GPS) RWY 16

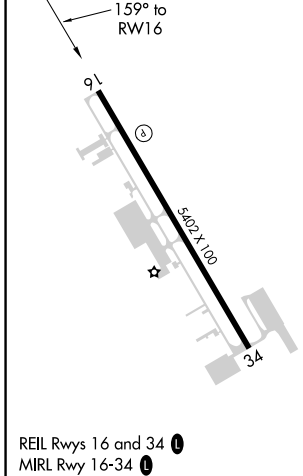
HANOVER COUNTY MUNI (OFP)

RNP APCH.	MISSED APPROACH: Climb to 2000 direct BOACAB and left turn via 059° track to CALMI and left turn via 324° track to ISSIG and hold.
<p>⚠ When local altimeter setting not received, use Richmond Intl altimeter setting and increase all DA 37 feet and all MDA 40 feet; increase LNAV/VNAV all Cats and LNAV Cats C/D visibility ¼ mile. Baro-VNAV NA when using Richmond Intl altimeter setting. For uncompensated Baro-VNAV systems LNAV/VNAV NA below -15°C or above 54°C. Rwy 16 helicopter visibility reduction below ¾ SM NA.</p>	

ASOS <b>119.025</b>	POTOMAC APP CON <b>126.75 307.2</b>	CLNC DEL <b>125.4</b>	UNICOM <b>122.7 (CTAF) 0</b>
------------------------	--	--------------------------	---------------------------------



ELEV <b>207</b>	TDZE <b>207</b>
-----------------	-----------------



BAWAW Procedure Turn NA 1800 GP 3.00° TCH 40	2000	BOCAB	↙	CALMI	↙	ISSIG
	↑	✧	tr 059°	✧	tr 324°	✧
ASNAS VGSi and RNAV glidepath not coincident (VGSi Angle 3.00/TCH 40).						
1800		159°		RWY 16		
6.1 NM		4.8 NM				
CATEGORY	A	B	C	D		
LPV DA	535-1¼ 328 (400-1¼)					
LNAV/VNAV DA	564-1¼ 357 (400-1¼)					
LNAV MDA	700-1	493 (500-1)	700-1¼	700-1½	493 (500-1½)	
CIRCLING	700-1	493 (500-1)	900-2	1020-2¾	693 (700-2) 813 (900-2¾)	

NE-3, 15 JUL 2021 to 12 AUG 2021

NE-3, 15 JUL 2021 to 12 AUG 2021