

WAAS CH <b>82500</b> <b>W15A</b>	APP CRS <b>150°</b>	Rwy Idg TDZE Apt Elev	<b>4418</b> <b>17</b> <b>19</b>
----------------------------------------	------------------------	-----------------------------	---------------------------------------

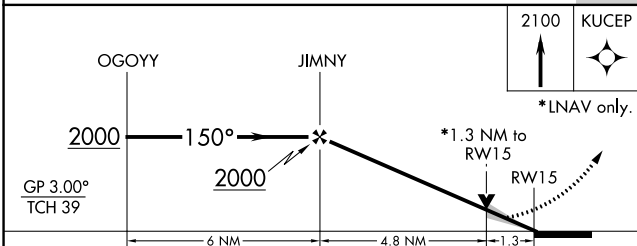
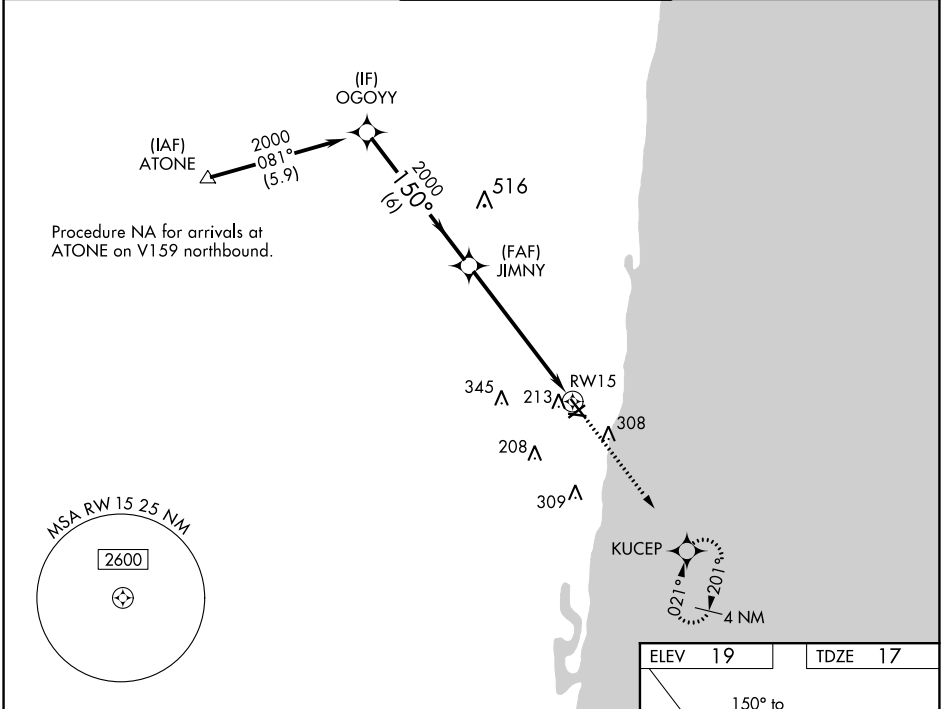
# RNAV (GPS) RWY 15

POMPANO BEACH AIRPARK (PMP)

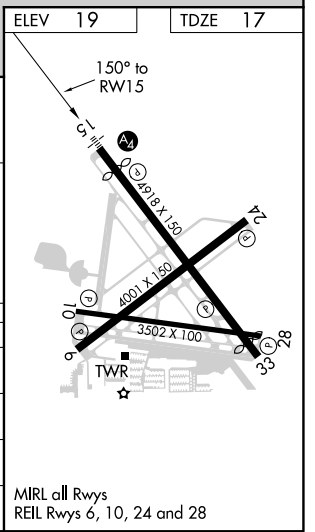
**⚠** Inop table does not apply. For uncompensated Baro-VNAV systems, LNAV/VNAV NA below 0°C (32°F) or above 54°C (130°F). DME/DME RNP-0.3 NA. When local altimeter setting not received, use Fort Lauderdale Exec altimeter setting.

**MALS** **MISSED APPROACH:** Climb to 2100 direct KUCEP and hold.

ATIS <b>120.55</b>	MIAMI APP CON <b>119.7 306.3</b>	POMPANO BEACH TOWER * <b>125.4 (CTAF) 0</b>	GND CON <b>121.9</b>	UNICOM <b>122.95</b>
-----------------------	-------------------------------------	------------------------------------------------	-------------------------	-------------------------



CATEGORY	A	B	C	D
LPV DA	296-3/4	279 (300-3/4)		NA
LNAV/VNAV DA	399-1	382 (400-1)		NA
LNAV MDA	480-1	463 (500-1)		NA
CIRCLING	660-1	641 (700-1)		NA



SE-3, 15 JUL 2021 to 12 AUG 2021

SE-3, 15 JUL 2021 to 12 AUG 2021