

WAAS CH <b>48825</b> <b>W28A</b>	APP CRS <b>303°</b>	Rwy ldg TDZE Apt Elev	<b>10000</b> <b>6606</b> <b>6606</b>
----------------------------------------	------------------------	-----------------------------	--------------------------------------------

# RNAV (GPS) RWY 28

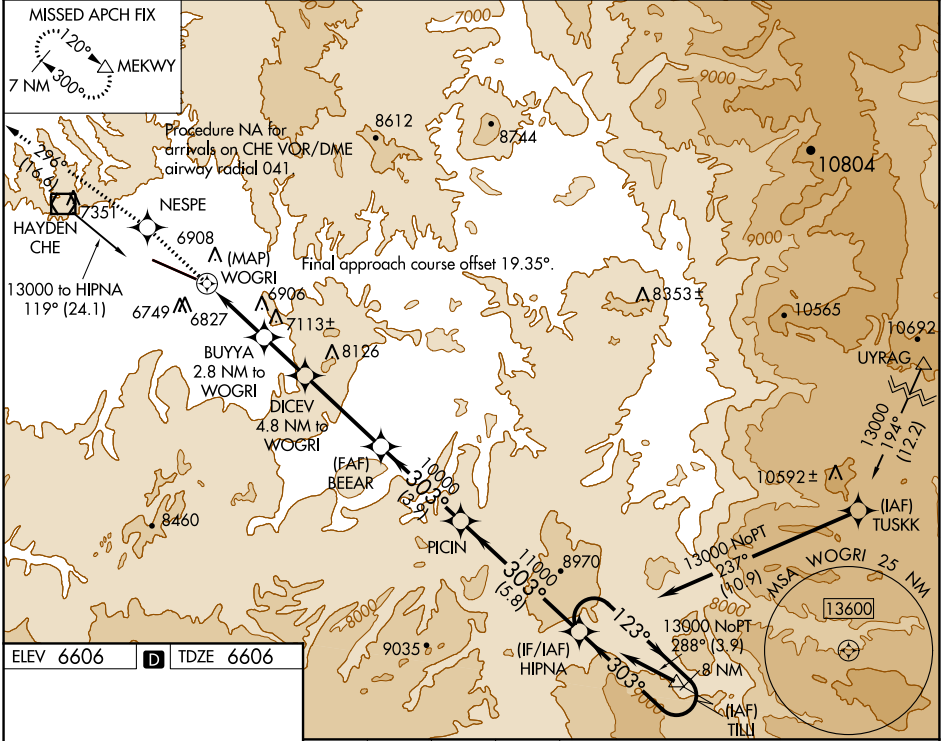
YAMPA VALLEY (HDN)

RNP APCH.

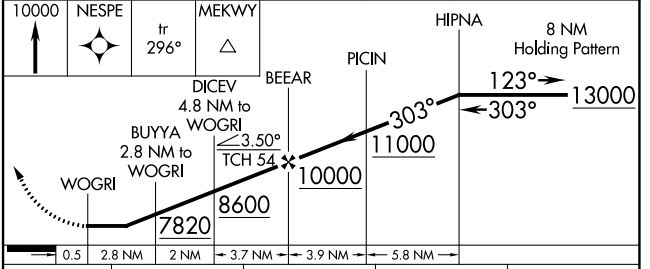
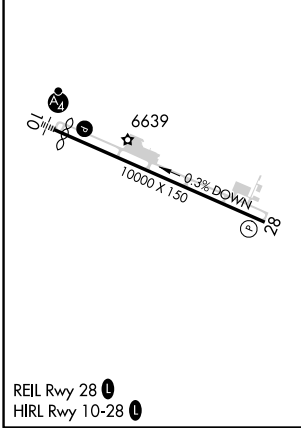
When local altimeter not received use Craig-Moffat altimeter setting and increase all MDA 100 feet, increase LP and LNAV Cat C/D visibility ¼ mile. Rwy 28 helicopter visibility reduction below ¾ SM NA.

MISSED APPROACH: Climb to 10000 direct NESPE and on track 296° to MEKWY and hold.

AWOS-3PT <b>119.275</b>	DENVER CENTER <b>120.475 235.975</b>	UNICOM <b>123.0 (CTAF) 0</b>
----------------------------	-----------------------------------------	---------------------------------



ELEV 6606	D	TDZE 6606
-----------	---	-----------



CATEGORY	A	B	C	D
LP MDA	7000-1	394 (400-1)	7000-1½	394 (400-1½)
LNAV MDA	7080-1	474 (500-1)	7080-1½	474 (500-1½)
CIRCLING	7220-1	614 (700-1)	7660-3 1054 (1100-3)	8180-3 1574 (1600-3)

SW-1, 15 JUL 2021 to 12 AUG 2021

SW-1, 15 JUL 2021 to 12 AUG 2021