

APP CRS	Rwy Idg	9490
104°	TDZE	6591
	Apt Elev	6606

RNAV (RNP) Z RWY 10

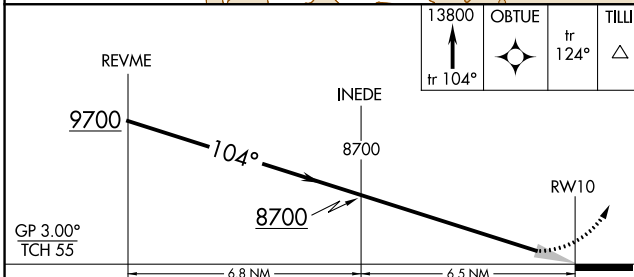
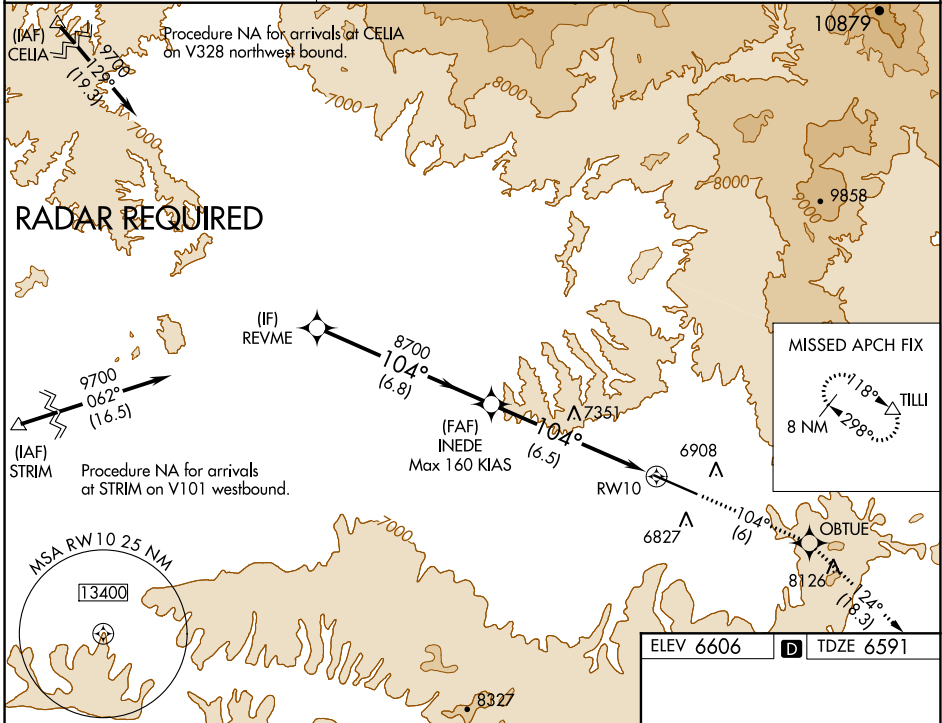
YAMPA VALLEY (HDN)

⚠ GPS required. Inop table does not apply to RNP 0.30. For uncompensated Baro-VNAV systems, procedure NA below -28°C (-18°F) or above 44°C (112°F). For inop MALSF, increase *RNP 0.20 Cat D visibility to 1½ mile and RNP 0.20 all Cats to 3 miles. *Missed approach requires a minimum climb of 286 feet per NM to 8900.

MALSF

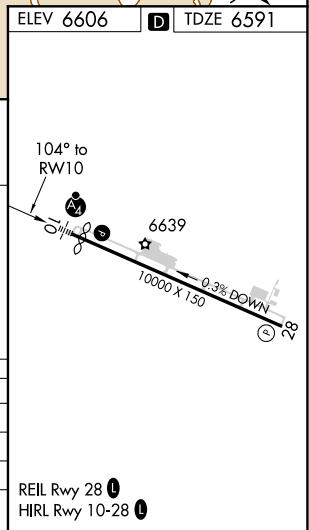
MISSED APPROACH: Climb to 13800 on track 104° to OBTUE and on track 124° to TILLI and hold, continue climb-in-hold to 13800.

AWOS-3PT 119.275	DENVER CENTER 120.475 235.975	UNICOM 123.0 (CTAF)
----------------------------	---	-------------------------------



CATEGORY	A	B	C	D
RNP 0.20 DA*		7016-1½	425 (500-1½)	
RNP 0.20 DA		7344-2½	753 (800-2½)	
RNP 0.30 DA		7921-5	1330 (1400-5)	

AUTHORIZATION REQUIRED



SW-1, 15 JUL 2021 to 12 AUG 2021

SW-1, 15 JUL 2021 to 12 AUG 2021