

WAAS CH 53410 W10A	APP CRS 104°	Rwy Idg TDZE Apt Elev	9490 6591 6606
--	------------------------	-----------------------------	---

RNAV (GPS) Y RWY 10

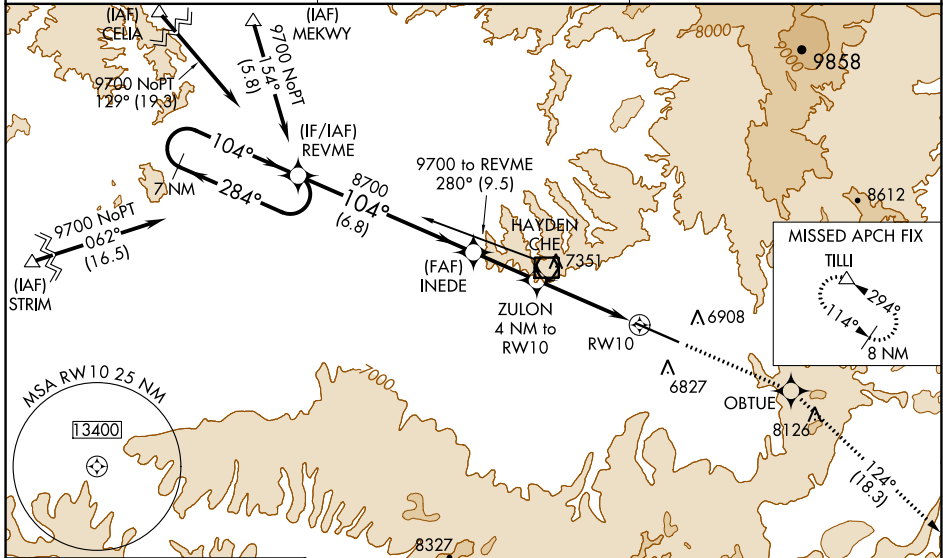
YAMPA VALLEY (HDN)

⚠ Inoperative table does not apply. Baro-VNAV NA when using Craig-Moffat altimeter setting. For uncompensated Baro-VNAV systems, LNAV/VNAV NA below -28°C (-18°F) or above 44°C (112°F). DME/DME RNP-0.3 NA. Helicopter visibility reduction below 3/4 SM NA. When local altimeter setting not received, use Craig-Moffat altimeter setting and increase all DA/MDA 100 feet, and LPV all Cats visibility 1/2 mile. # Missed approach requires a minimum climb of 295 feet per NM to 8700.

MALSF

MISSED APPROACH:
Climb to 13700 direct OBTUE and on track 124° to TILLI and hold, continue climb-in-hold to 13700.

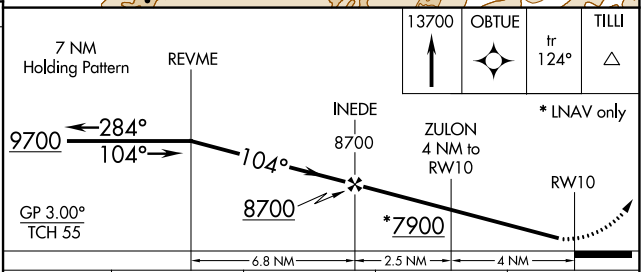
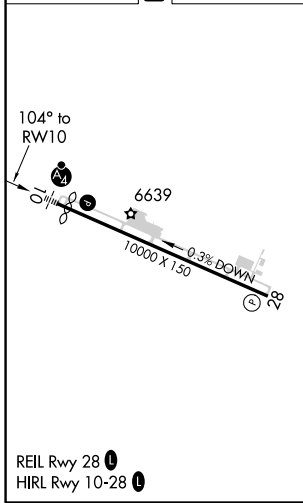
AWOS-3 119.275	DENVER CENTER 120.475 235.975	UNICOM 123.0 (CTAF) 0
--------------------------	---	---------------------------------



SW-1, 15 JUL 2021 to 12 AUG 2021

SW-1, 15 JUL 2021 to 12 AUG 2021

ELEV 6606	D	TDZE 6591
-----------	----------	-----------



CATEGORY	A	B	C	D
#LPV DA		6791-3/4	200 (200-3/4)	
LPV DA		7308-2 1/2	717 (800- 2 1/2)	
LNAV/ VNAV DA		7918-5	1327 (1400-5)	
LNAV MDA	7700-1 1109 (1100-1)	7700-1 1/4 1109 (1100-1 1/4)	7700-3	1109 (1100-3)
C CIRCLING	7700-1 1/4 1094 (1100-1 1/4)	7700-1 1/2 1094 (1100-1 1/2)	7700-3 1094 (1100-3)	8180-3 1574 (1600-3)