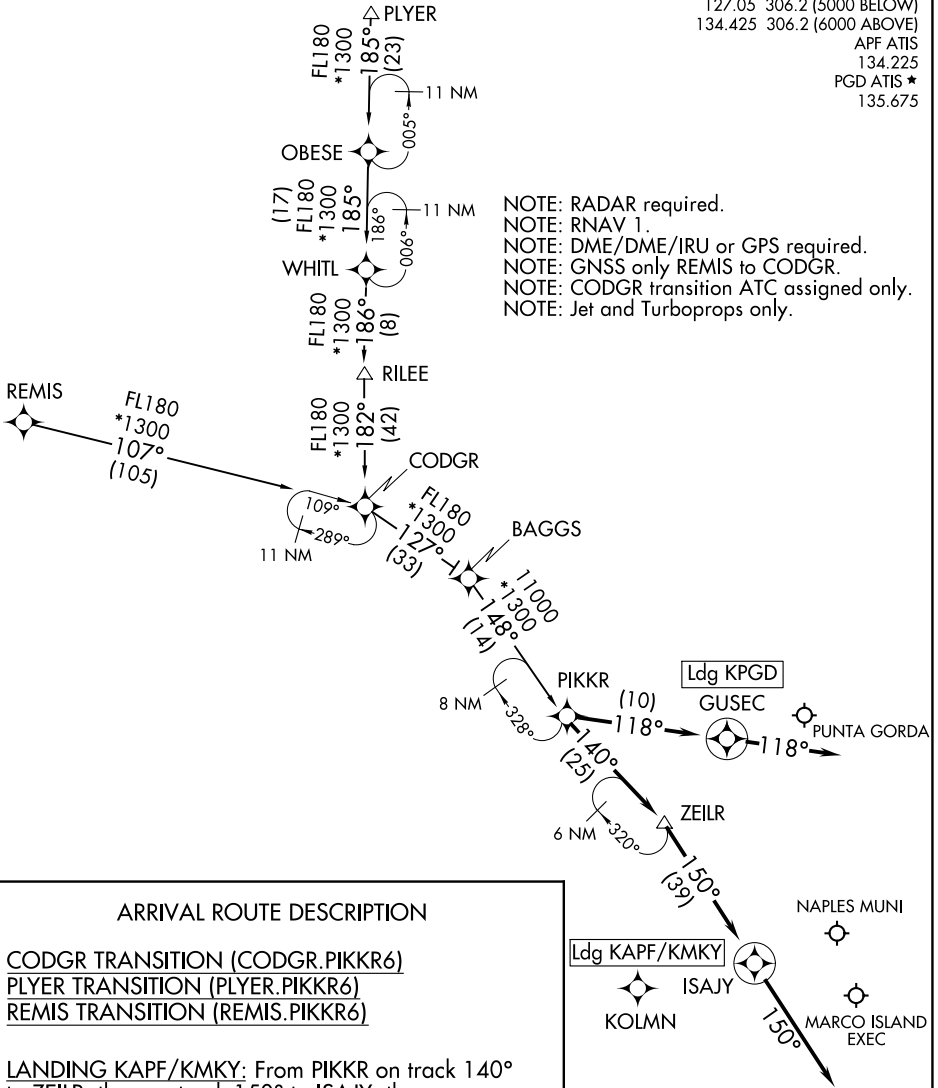


FORT MYERS APP CON ★
 127.05 306.2 (5000 BELOW)
 134.425 306.2 (6000 ABOVE)
 APF ATIS 134.225
 PGD ATIS ★ 135.675

NOTE: RADAR required.
 NOTE: RNAV 1.
 NOTE: DME/DME/IRU or GPS required.
 NOTE: GNSS only REMIS to CODGR.
 NOTE: CODGR transition ATC assigned only.
 NOTE: Jet and Turboprops only.



SE-3, 15 JUL 2021 to 12 AUG 2021

SE-3, 15 JUL 2021 to 12 AUG 2021

ARRIVAL ROUTE DESCRIPTION

CODGR TRANSITION (CODGR.PIKKR6)
PLYER TRANSITION (PLYER.PIKKR6)
REMIS TRANSITION (REMIS.PIKKR6)

LANDING KAPF/KMKY: From PIKKR on track 140° to ZEILR, then on track 150° to ISAJY, then on heading 150° or as assigned by ATC. Expect RADAR vectors to final approach course.

LANDING KPGD: From PIKKR on track 118° to GUSEC, then on heading 118° or as assigned by ATC. Expect RADAR vectors to final approach course.

NOTE: Chart not to scale.