

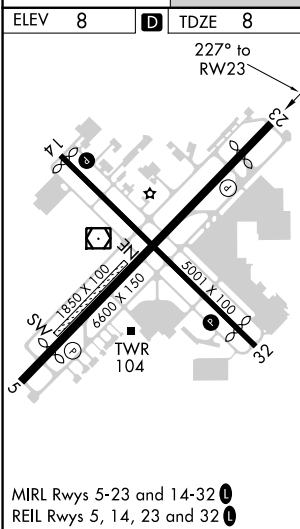
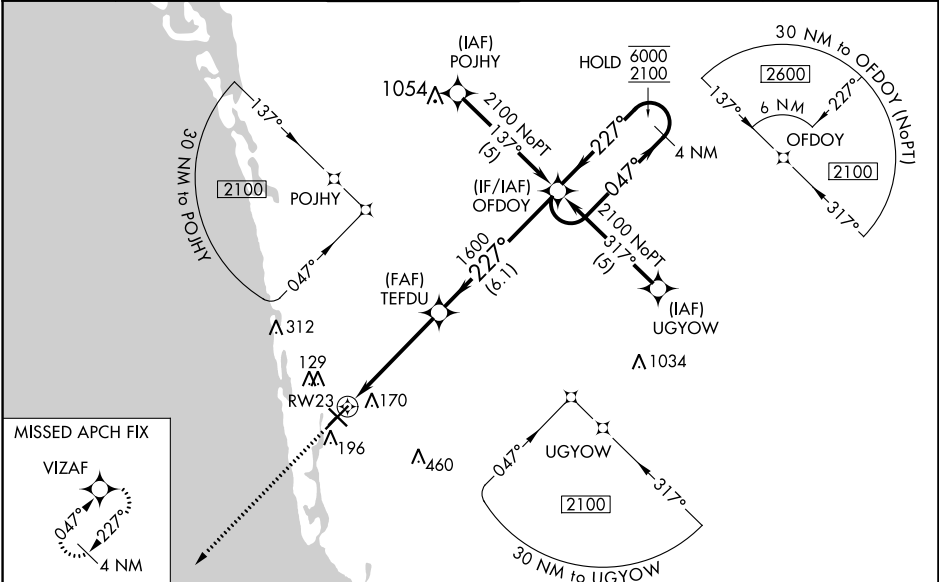
WAAS CH 69314 W23A	APP CRS 227°	Rwy ldg TDZE Apt Elev	5000 8 8
--	------------------------	-----------------------------	-------------------------------------

RNAV (GPS) RWY 23

NAPLES MUNI (APF)

RNP APCH.	<p>MISSED APPROACH: Climb to 2100 direct VIZAF and hold.</p>
<p>▽ ▲ Rwy 23 helicopter visibility reduction below $\frac{3}{4}$ SM NA. For uncompensated Baro-VNAV systems, LNAV/VNAV NA below 5°C or above 54°C.</p>	

ATIS 134.225	FORT MYERS APP CON* 124.125 371.85	NAPLES TOWER* 128.5 (CTAF) 0	GND CON 121.6	CLNC DEL 118.0	CLNC DEL 124.125 (When twr closed)
------------------------	--	--	-------------------------	--------------------------	---



ELEV 8	D	TDZE 8
2100	VIZAF	
*LNAV only.		
RW23	TEFDU	OFDOY
1.2 NM	3.6 NM	6.1 NM
1600	1600	6000
		2100
GP 3.00° TCH 44		
LPV DA	313- $\frac{7}{8}$	305 (400- $\frac{7}{8}$)
LNAV/VNAV DA	461-1 $\frac{3}{8}$	453 (500-1 $\frac{3}{8}$)
LNAV MDA	440-1 432 (500-1)	440-1 $\frac{1}{4}$ 432 (500-1 $\frac{1}{4}$)
CIRCLING	580-1 572 (600-1)	680-2 820-2 $\frac{3}{4}$ 672 (700-2) 812 (900-2 $\frac{3}{4}$)

SE-3, 15 JUL 2021 to 12 AUG 2021

SE-3, 15 JUL 2021 to 12 AUG 2021