

WAAS CH <b>73015</b> W05A	APP CRS <b>047°</b>	Rwy ldg TDZE Apt Elev	<b>5000</b> <b>8</b> <b>8</b>
---------------------------------	------------------------	-----------------------------	-------------------------------------

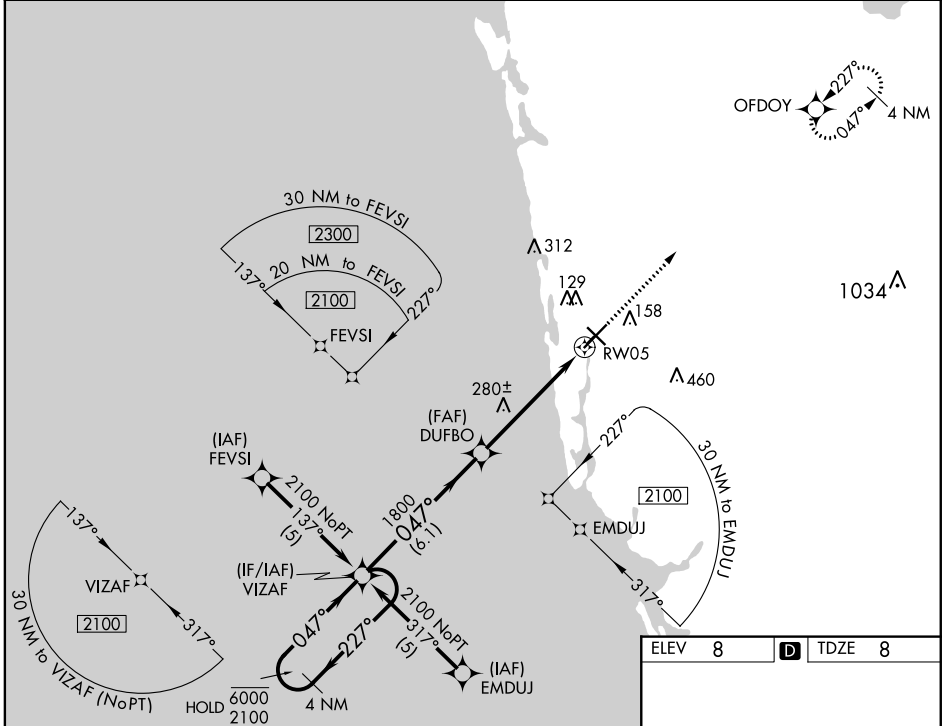
# RNAV (GPS) RWY 5

NAPLES MUNI (APF')

RNP APCH.  
 ▼ For uncompensated Baro-VNAV systems,  
 ▲ LNAV/VNAV NA below 5°C or above 54°C.

MISSED APPROACH: Climb to 2100 direct OFDOY and hold.

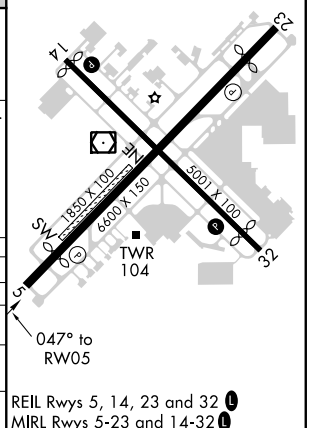
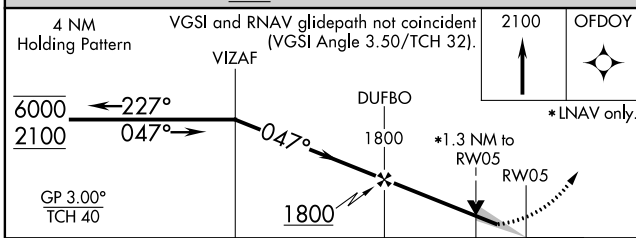
ATIS <b>134.225</b>	FORT MYERS APP CON* <b>124.125 371.85</b>	NAPLES TOWER* <b>128.5</b> (CTAF) <b>0</b>	GND CON <b>121.6</b>	CLNC DEL <b>118.0</b>	CLNC DEL <b>124.125</b> (When twr closed)
------------------------	--	---	-------------------------	--------------------------	---



SE-3, 15 JUL 2021 to 12 AUG 2021

SE-3, 15 JUL 2021 to 12 AUG 2021

ELEV 8	D TDZE 8
--------	----------



CATEGORY	A	B	C	D
LPV DA		295- <sup>7</sup> / <sub>8</sub>	287 (300- <sup>7</sup> / <sub>8</sub> )	
LNAV/VNAV DA		446- <sup>1</sup> / <sub>4</sub>	438 (500- <sup>1</sup> / <sub>4</sub> )	
LNAV MDA	540-1	532 (600-1)	540- <sup>1</sup> / <sub>2</sub>	532 (600- <sup>1</sup> / <sub>2</sub> )
CIRCLING	580-1	572 (600-1)	680-2 672 (700-2)	820- <sup>3</sup> / <sub>4</sub> 812 (900- <sup>3</sup> / <sub>4</sub> )

REIL Rwy 5, 14, 23 and 32 **0**  
 MIRL Rwy 5-23 and 14-32 **0**