

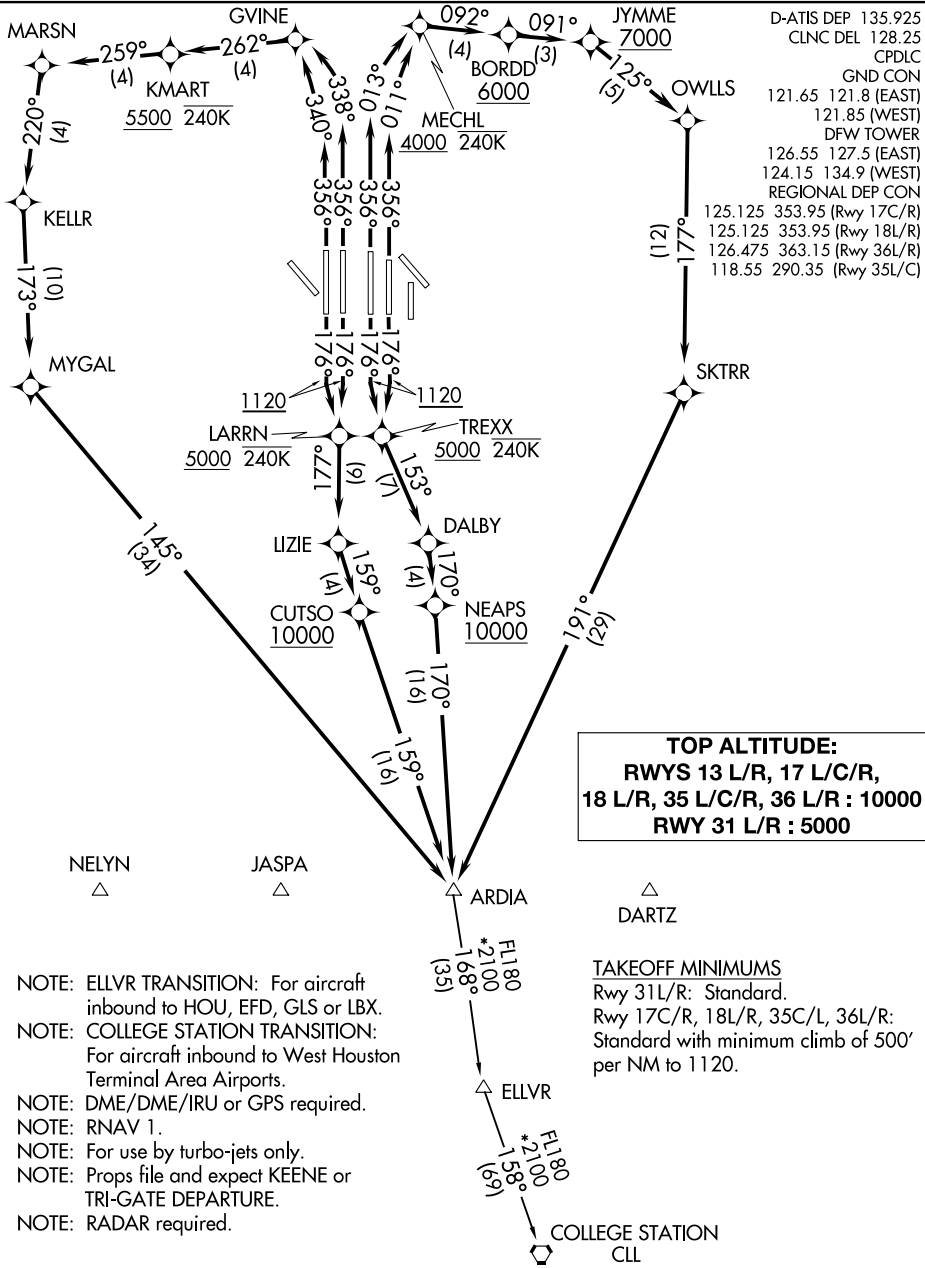
(ARDIA7.ARDIA) 19283

AL-6039 (FAA)

DALLAS-FORT WORTH INTL (DFW)

ARDIA SEVEN DEPARTURE (RNAV)

DALLAS-FORT WORTH, TEXAS



SC-2, 15 JUL 2021 to 12 AUG 2021

SC-2, 15 JUL 2021 to 12 AUG 2021

TOP ALTITUDE:
RWY 13 L/R, 17 L/C/R,
18 L/R, 35 L/C/R, 36 L/R: 10000
RWY 31 L/R: 5000

TAKEOFF MINIMUMS
 Rwy 31L/R: Standard.
 Rwy 17C/R, 18L/R, 35C/L, 36L/R:
 Standard with minimum climb of 500'
 per NM to 1120.

- NOTE: ELLVR TRANSITION: For aircraft inbound to HOU, EFD, GLS or LBX.
- NOTE: COLLEGE STATION TRANSITION: For aircraft inbound to West Houston Terminal Area Airports.
- NOTE: DME/DME/IRU or GPS required.
- NOTE: RNAV 1.
- NOTE: For use by turbo-jets only.
- NOTE: Props file and expect KEENE or TRI-GATE DEPARTURE.
- NOTE: RADAR required.

NOTE: Chart not to scale

(NARRATIVE ON FOLLOWING PAGE)

ARDIA SEVEN DEPARTURE (RNAV)

(ARDIA7.ARDIA) 10OCT19

DALLAS-FORT WORTH, TEXAS

DALLAS-FORT WORTH INTL (DFW)