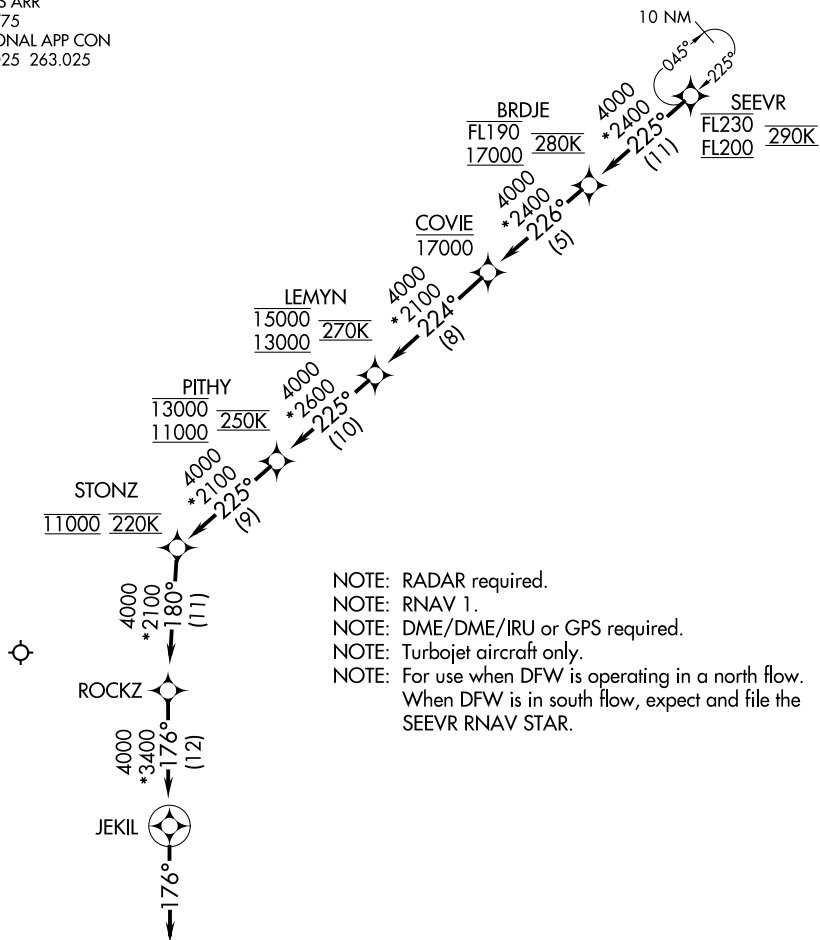


BRDJE THREE ARRIVAL (RNAV) Arrival Route

D-ATIS ARR  
123.775  
REGIONAL APP CON  
125.025 263.025



- NOTE: RADAR required.
- NOTE: RNAV 1.
- NOTE: DME/DME/IRU or GPS required.
- NOTE: Turbojet aircraft only.
- NOTE: For use when DFW is operating in a north flow. When DFW is in south flow, expect and file the SEEVR RNAV STAR.

NOTE: Chart not to scale.

ARRIVAL ROUTE DESCRIPTION

From SEEVR on track 225° to cross BRDJE between 17000 and FL190 and at 280K, then on track 226° to cross COVIE at/below 17000, then on track 224° to cross LEMYN between 13000 and 15000 and at 270K, then on track 225° to cross PITHY between 11000 and 13000 and at 250K, then on track 225° to cross STONZ at 11000 and at 220K, then on track 180° to ROCKZ, then on track 176° to JEKIL, then on track 176°. Expect RADAR vectors to final approach course.