

LOC/DME I-CIX 110.55 Chan 42 (Y)	APP CRS 176°	Rwy Ldg 13401 TDZE 602 Apt Elev 606
--	------------------------	--

CONVERGING ILS RWY 18L

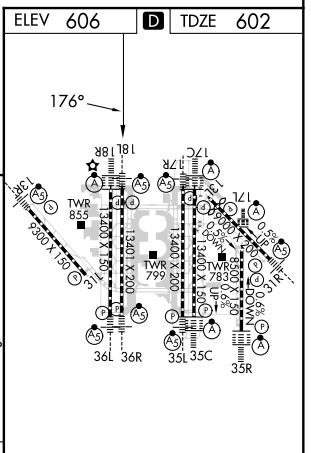
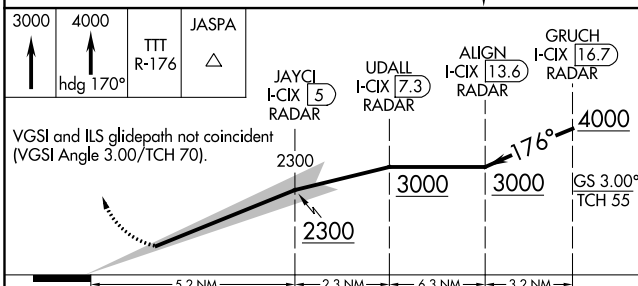
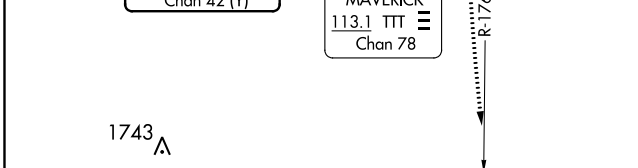
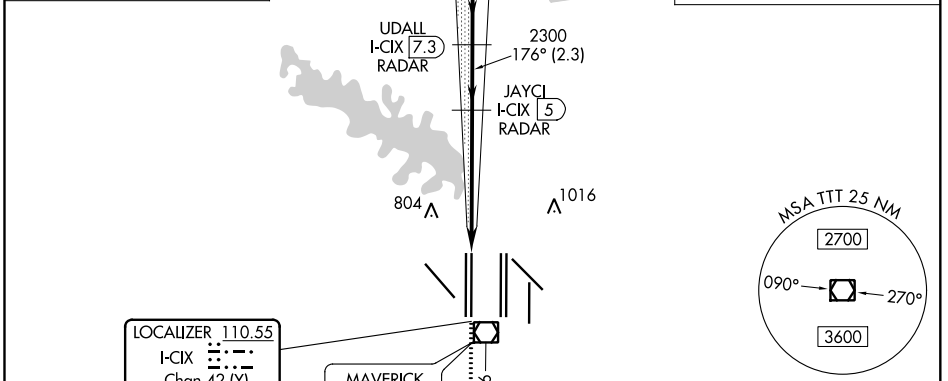
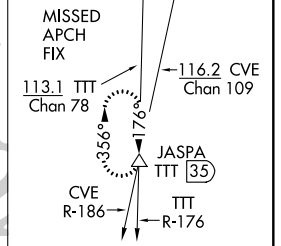
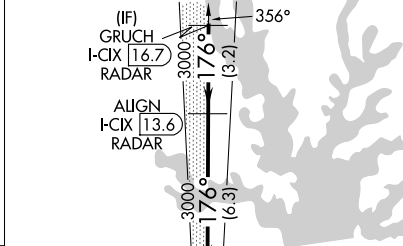
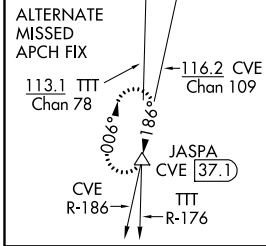
DALLAS-FORT WORTH INTL (DFW)

DME and RADAR required.

Simultaneous approach authorized with CONVERGING ILS RWY 13R.

MALSRR MISSED APPROACH: Climb to 3000, then climb to 4000 on heading 170° and TTT VOR/DME R-176 to JASPA/TTT 35 DME and hold.

D-ATIS ARR 123.775 DEP 135.925	REGIONAL APP CON 118.425	DFW TOWER 126.55 127.5 EAST 124.15 134.9 WEST	GND CON 121.65 121.8 EAST 121.85 WEST	CLNC DEL 128.25	CPDLC
--	------------------------------------	---	---	---------------------------	-------



CATEGORY	A	B	C	D
S-ILS 18L	802/18		200 (200-½)	

HIRL all Rwy's
REIL Rwy's 13L and 31L
TDZ/CL all Rwy's except 13L and 31L

CONVERGING ILS RWY 18L

SC-2, 15 JUL 2021 to 12 AUG 2021

SC-2, 15 JUL 2021 to 12 AUG 2021