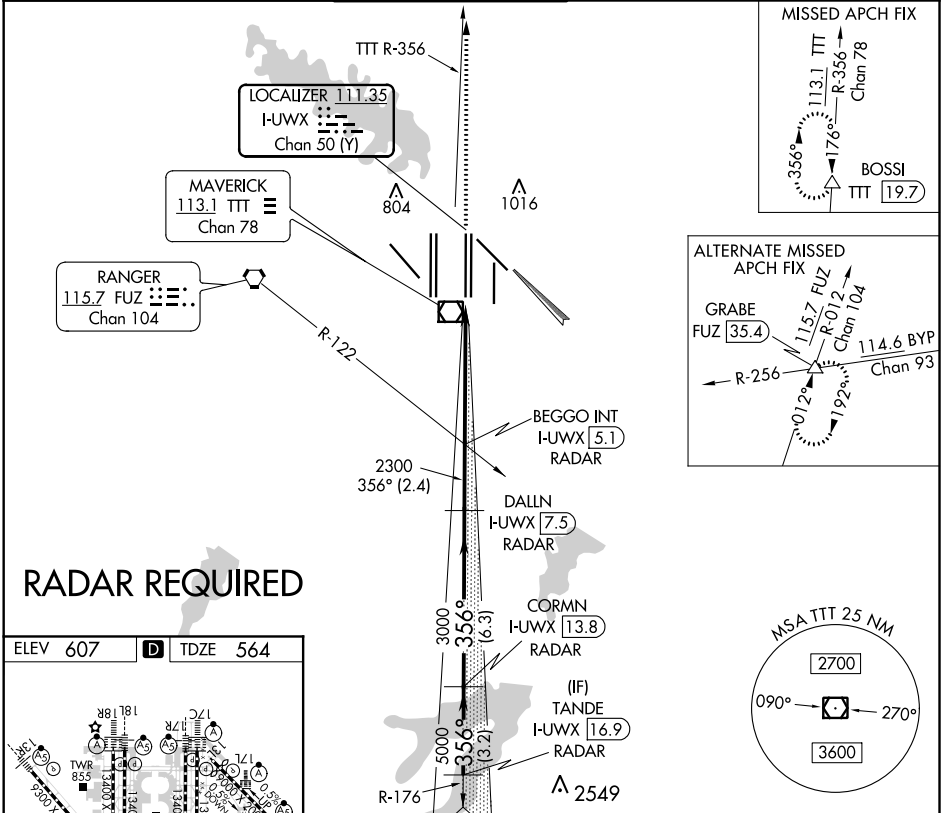


LOC/DME I-UWX <b>111.35</b> Chan <b>50 (Y)</b>	APP CRS <b>356°</b>	Rwy Idg <b>13400</b> TDZE <b>564</b> Apt Elev <b>607</b>
--	------------------------	--

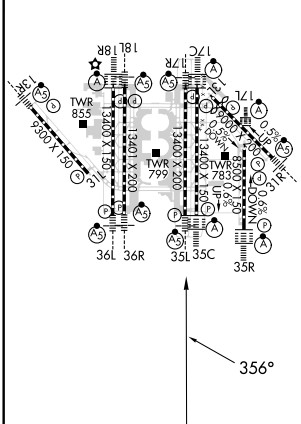
# CONVERGING ILS RWY 35L

DALLAS-FORT WORTH INTL (DFW)

D-ATIS ARR <b>123.775</b> DEP <b>135.925</b>	REGIONAL APP CON <b>127.075</b>	DFW TOWER		GND CON <b>121.65 121.8 EAST</b> <b>121.85 WEST</b>	CLNC DEL <b>128.25</b>	CPDLC
		<b>126.55 127.5 EAST</b> <b>124.15 134.9 WEST</b>	MALS R 			



ELEV 607 **D** TDZE 564



HIRL all Rws  
REIL Rws 13L and 31L  
TDZ/CL all Rws except 13L and 31L

TANDE I-UWX 16.9 RADAR	CORMN I-UWX 13.8 RADAR	DALLN I-UWX 7.5 RADAR	BEGGO INT I-UWX 5.1 RADAR	2000 ↑ 3000 ↑ BOSSI △ TTT R-356
<p>6000 — 356° — 5000 — 3000 — 2300</p> <p>GS 3.00° TCH 47</p> <p>3.2 NM    6.3 NM    2.4 NM    5.3 NM</p>				
CATEGORY A		CATEGORY B		CATEGORY C
S-ILS 35L		764/18		200 (200-½)

SC-2, 15 JUL 2021 to 12 AUG 2021

SC-2, 15 JUL 2021 to 12 AUG 2021