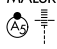


LOC/DME I-BXN 111.9 Chan 56	APP CRS 356°	Rwy Idg TDZE Apt Elev 13400 588 607
---	------------------------	---

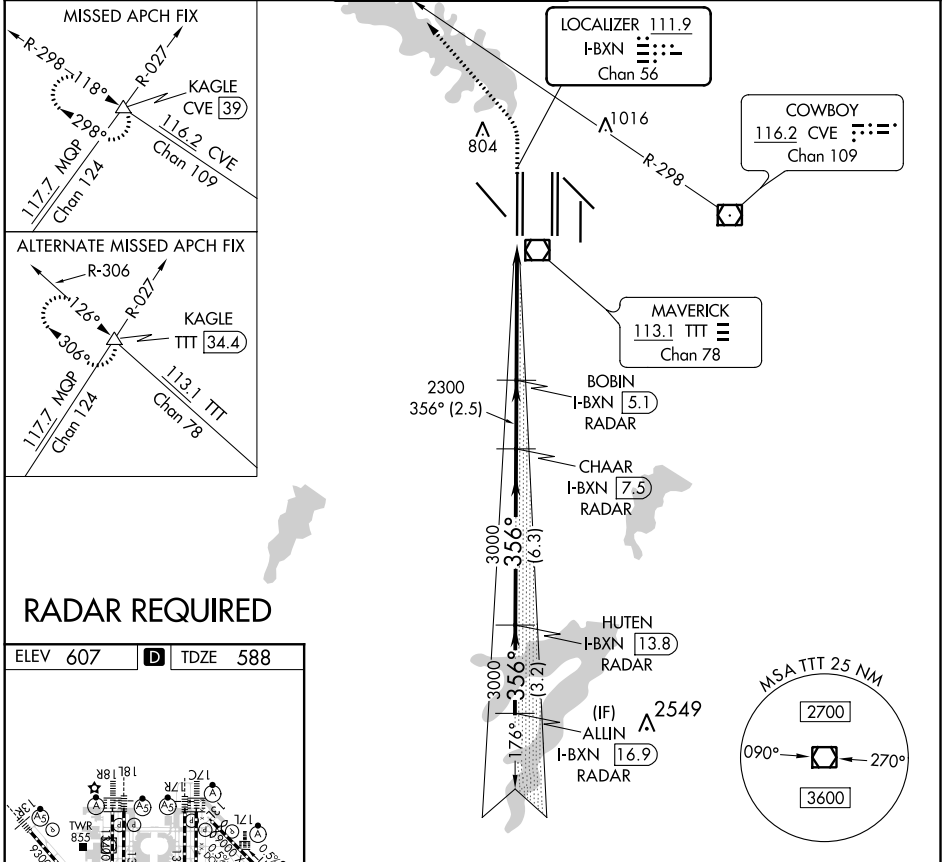
CONVERGING ILS RWY 36L

DALLAS-FORT WORTH INTL (DFW)

▼ DME or RADAR required. Simultaneous approach authorized with CONVERGING ILS RWY 31R.

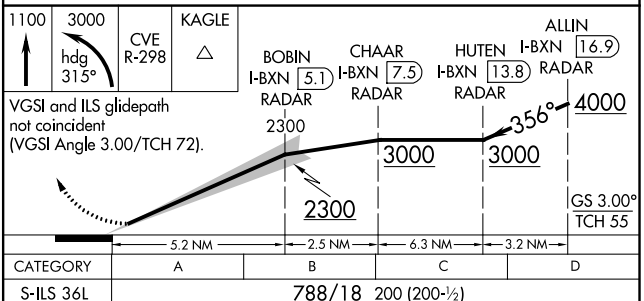
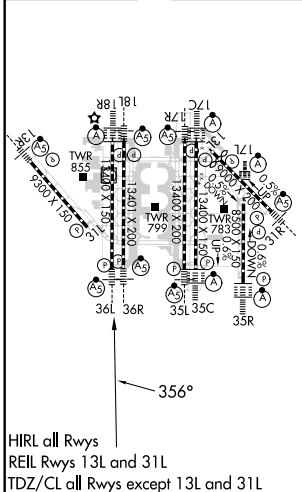
MALSR  MISSED APPROACH: Climb to 1100 then climbing left turn to 3000 on heading 315° and CVE VOR/DME R-298 to KAGLE INT/CVE VOR/DME 39 DME and hold.

D-ATIS ARR 123.775 DEP 135.925	REGIONAL APP CON 118.425	DFW TOWER 126.55 127.5 EAST 124.15 134.9 WEST	GND CON 121.65 121.8 EAST 121.85 WEST	CLNC DEL 128.25	CPDLC
--	------------------------------------	---	---	---------------------------	-------



RADAR REQUIRED

ELEV 607 **D** TDZE 588



CONVERGING ILS RWY 36L

SC-2, 15 JUL 2021 to 12 AUG 2021

SC-2, 15 JUL 2021 to 12 AUG 2021