

LOC/DME I-FJN 110.55 Chan 42 (Y)	APP CRS 356°	Rwy Idg TDZE Apt Elev 13401 581 607
--	------------------------	---

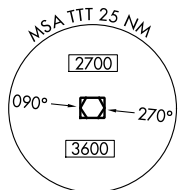
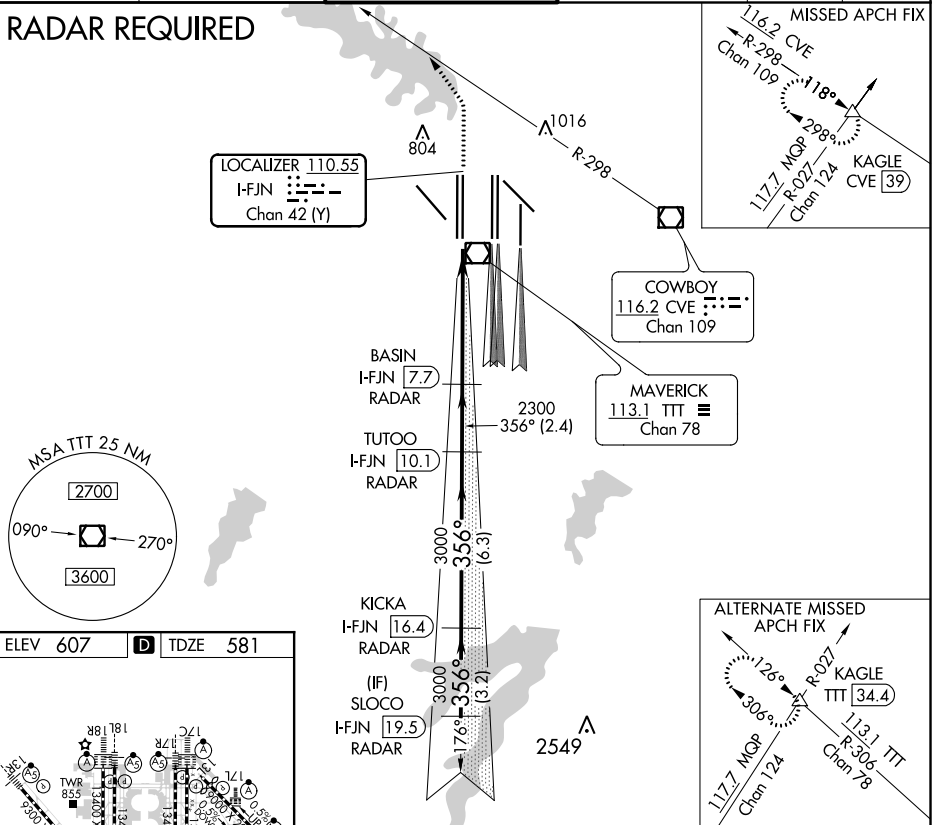
CONVERGING ILS RWY 36R

DALLAS-FORT WORTH INTL (DFW)

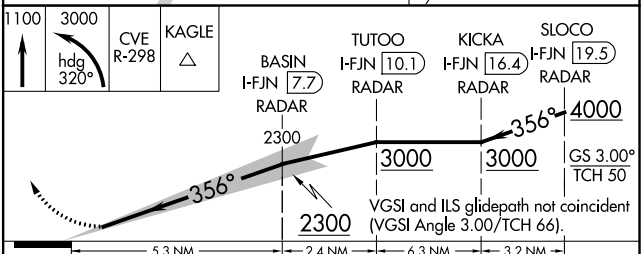
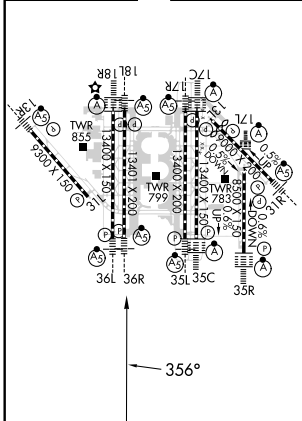
<p>Simultaneous approach authorized with Converging ILS Rwy 31R. DME or Radar required.</p>	<p>MALSR</p>	<p>MISSED APPROACH: Climb to 1100, then climbing left turn to 3000 on heading 320° and CVE VOR/DME R-298 to KAGLE INT/CVE 39 DME and hold.</p>

D-ATIS ARR 123.775 DEP 135.925	REGIONAL APP CON 118.425	DFW TOWER 126.55 127.5 EAST 124.15 134.9 WEST	GND CON 121.65 121.8 EAST 121.85 WEST	CLNC DEL 128.25	CPDLC
--	------------------------------------	---	---	---------------------------	-------

RADAR REQUIRED



ELEV 607	D	TDZE 581
-----------------	----------	-----------------



CATEGORY	A	B	C	D
S-ILS 36R	781/18		200 (200-½)	

SC-2, 15 JUL 2021 to 12 AUG 2021

SC-2, 15 JUL 2021 to 12 AUG 2021