

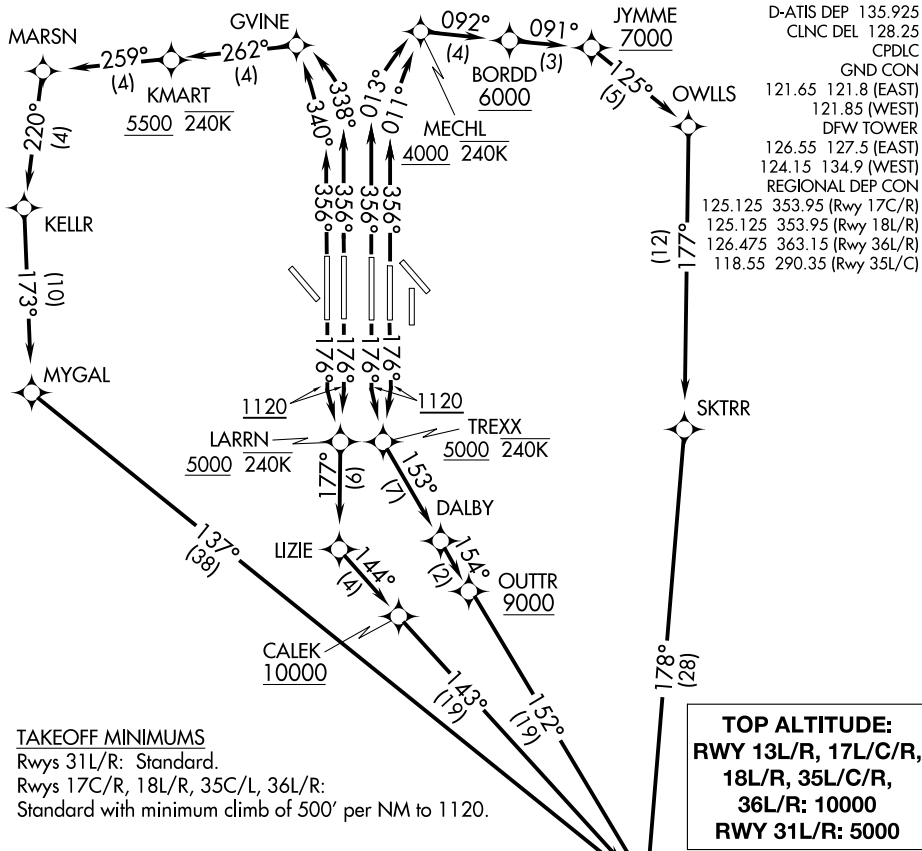
(DARTZ8.DARTZ) 19283

AL-6039 (FAA)

DALLAS-FORT WORTH INTL (DFW)

# DARTZ EIGHT DEPARTURE (RNAV)

DALLAS-FORT WORTH, TEXAS



D-ATIS DEP 135.925  
 CLNC DEL 128.25  
 CPDLC  
 GND CON  
 121.65 121.8 (EAST)  
 121.85 (WEST)  
 DFW TOWER  
 126.55 127.5 (EAST)  
 124.15 134.9 (WEST)  
 REGIONAL DEP CON  
 125.125 353.95 (Rwy 17C/R)  
 125.125 353.95 (Rwy 18L/R)  
 126.475 363.15 (Rwy 36L/R)  
 118.55 290.35 (Rwy 35L/C)

SC-2, 15 JUL 2021 to 12 AUG 2021

SC-2, 15 JUL 2021 to 12 AUG 2021

- NOTE: BILEE TRANSITION: For aircraft overlying BILEE intersection on J87 to overfly TNV VOR/DME.
- NOTE: TORNN TRANSITION: For aircraft overlying TORNN intersection, then on the appropriate RNAV STAR to George Bush Intercontinental, Lone Star Executive, or David Wayne Hooks Memorial airports. Also for aircraft landing in the Lafayette, Lake Charles, or Beaumont/Port Arthur terminal areas.
- NOTE: DME/DME/IRU or GPS required.
- NOTE: RNAV 1.
- NOTE: For use by turbo-jets only.
- NOTE: RADAR required.

NOTE: Chart not to scale.

(NARRATIVE ON FOLLOWING PAGE)

# DARTZ EIGHT DEPARTURE (RNAV)

(DARTZ8.DARTZ) 10OCT19

DALLAS-FORT WORTH, TEXAS

DALLAS-FORT WORTH INTL (DFW)