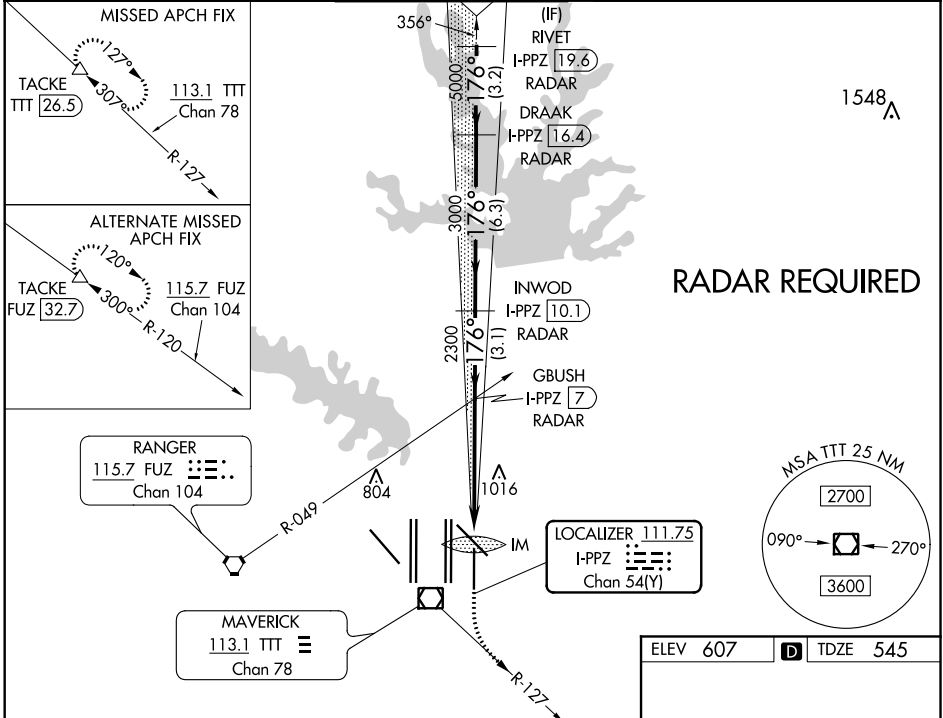


LOC/DME I-PPZ 111.75 Chan 54 (Y)	APP CRS 176°	Rwy Idg TDZE Apt Elev	8500 545 607
------------------------------------------------------	------------------------	-----------------------------	-----------------------------------------

ILS RWY 17L (CAT II & III)

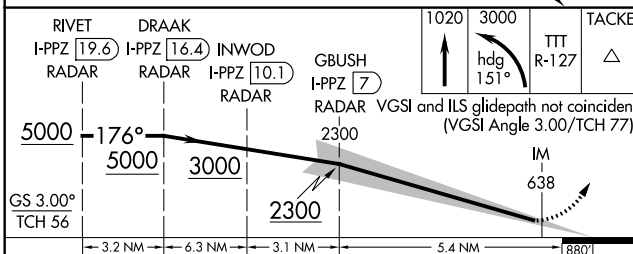
DALLAS-FORT WORTH INTL (DFW)

<p>Simultaneous approach authorized with Rwy 17C/R and Rwy 18L/R. DME required.</p>		<p>ALSF-2</p>	<p>MISSED APPROACH: Climb to 1020 then climbing left turn to 3000 on heading 151° and TTT VOR/DME R-127 to TACKE/TTT 26.5 DME and hold.</p>		
D-ATIS ARR 123.775 DEP 135.925	REGIONAL APP CON 119.4	DFW TOWER 126.55 127.5 EAST 124.15 134.9 WEST	GND CON 121.65 121.8 EAST 121.85 WEST	CLNC DEL 128.25	CPDLC

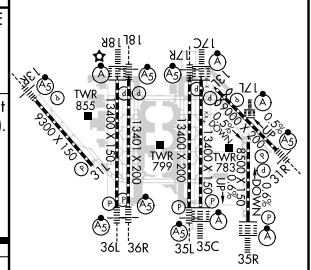


RADAR REQUIRED

ELEV 607	TDZE 545
----------	----------



CATEGORY	A	B	C	D
S-ILS 17L	CAT II RA 122/12 100 DA 645			
S-ILS 17L	CAT IIIa RVR 07			
S-ILS 17L	CAT IIIb RVR 06			
S-ILS 17L	CAT IIIc NA			



CATEGORY II & III ILS - SPECIAL AIRCREW & AIRCRAFT CERTIFICATION REQUIRED

HIRL all Rwys
REIL Rwys 13L and 31L
TDZ/CL all Rwys except 13L and 31L

SC-2, 15 JUL 2021 to 12 AUG 2021

SC-2, 15 JUL 2021 to 12 AUG 2021