

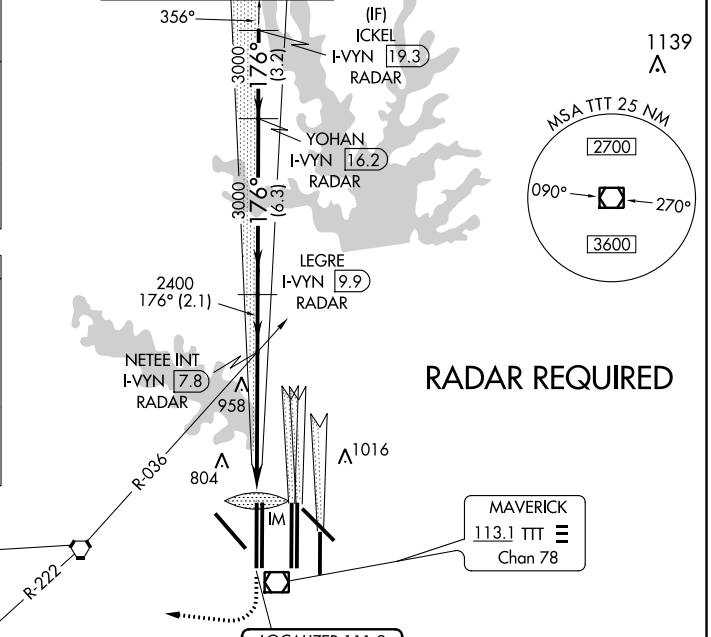
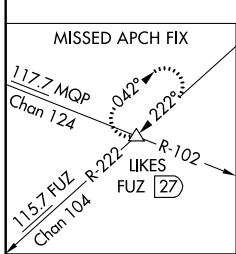
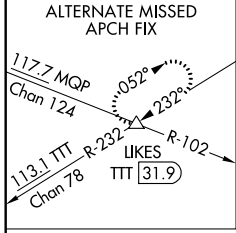
LOC/DME I-VYIN 111.9 Chan 56	APP CRS 176°	Rwy Idg TDZE Apt Elev	13400 607 607
--	------------------------	-----------------------------	--

ILS RWY 18R (CAT II & III)

DALLAS-FORT WORTH INTL (DFW)

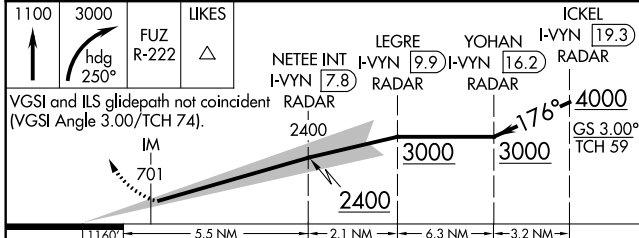
▲ DME or RADAR required. Simultaneous approach authorized with Rwy 17 L/C/R. **ALSIF-2** MISSED APPROACH: Climb to 1100 then climbing right turn to 3000 on heading 250° and FUZ VORTAC R-222 to LIKES INT/FUZ VORTAC 27 DME and hold.

D-ATIS ARR 123.775 DEP 135.925	REGIONAL APP CON 118.425	DFW TOWER 126.55 127.5 EAST 124.15 134.9 WEST	GND CON 121.65 121.8 EAST 121.85 WEST	CLNC DEL 128.25	CPDLC
--	------------------------------------	---	---	---------------------------	-------



RADAR REQUIRED

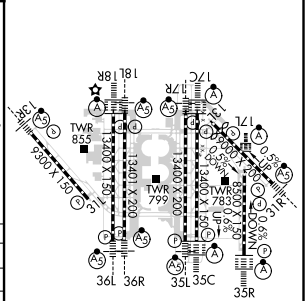
1100	3000	FUZ R-222	LIKES	ICKEL I-VYIN [19.3] RADAR
↑	hdg 250°			



CATEGORY	A	B	C	D
S-ILS 18R		CAT II RA 106/12 100 DA 707		
S-ILS 18R		CAT IIIa RVR 07		
S-ILS 18R		CAT IIIb RVR 06		
S-ILS 18R		CAT IIIc NA		

CATEGORY II & III ILS - SPECIAL AIRCREW & AIRCRAFT CERTIFICATION REQUIRED

ELEV 607	D	TDZE 607
----------	----------	----------



HIRL all Rwys
REL Rwy 13L and 31L
TDZ/CL all Rwy except 13L and 31L

SC-2, 15 JUL 2021 to 12 AUG 2021

SC-2, 15 JUL 2021 to 12 AUG 2021