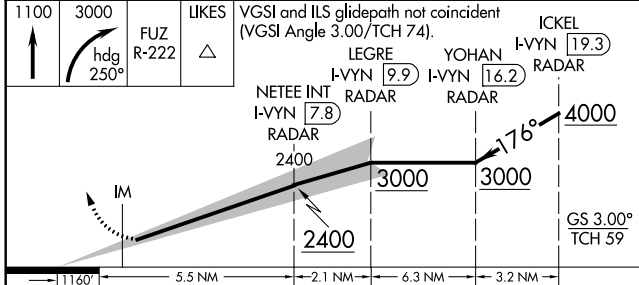
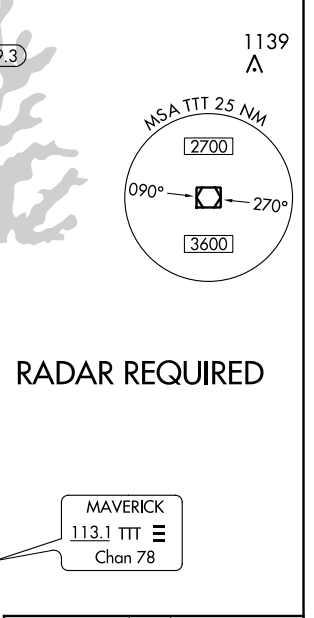
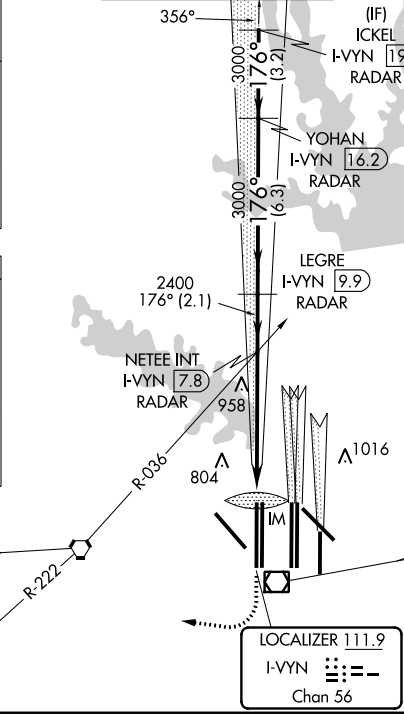
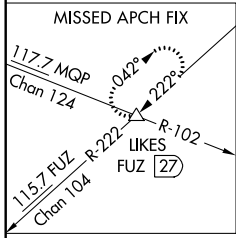
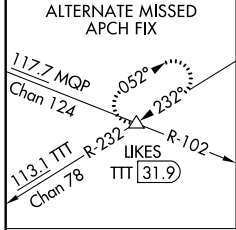


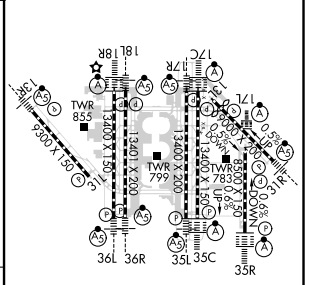
LOC/DME I-VYIN 111.9 Chan 56	APP CRS 176°	Rwy Idg TDZE Apt Elev	13400 607 607
--	------------------------	-----------------------------	--

ILS RWY 18R (SA CAT I)
DALLAS-FORT WORTH INTL (DFW)

▽ ▲	DME or RADAR required. Simultaneous approach authorized with Rwy 17 L/C/R. Requires specific OPSPEC, MSPEC, or LOA approval and use of HUD to DH.	Rwy 18R ALS-F2 A	MISSED APPROACH: Climb to 1100 then climbing right turn to 3000 on heading 250° and FUZ VORTAC R-222 to LIKES INT/FUZ VORTAC 27 DME and hold.	
D-ATIS ARR 123.775 DEP 135.925	REGIONAL APP CON 118.425	DFW TOWER 126.55 127.5 EAST 124.15 134.9 WEST		GND CON 121.65 121.8 EAST 121.85 WEST
			CLNC DEL 128.25	CPDLC



ELEV 607	D	TDZE 607
----------	----------	----------



CATEGORY	A	B	C	D
S-ILS 18R	RA 158/14		150 DA 757	

SA CATEGORY I ILS - SPECIAL AIRCREW & AIRCRAFT CERTIFICATION REQUIRED

HIREL all Rwys
REIL Rwy 13L and 31L
TDZ/CL all Rwys except 13L and 31L

SC-2, 15 JUL 2021 to 12 AUG 2021

SC-2, 15 JUL 2021 to 12 AUG 2021