


LOC/DME I-RRR 110.9 Chan 46	APP CRS 311°	Rwy Idg TDZE Apt Elev	8373 523 607
-------------------------------------------------	------------------------	-----------------------------	-----------------------------------------

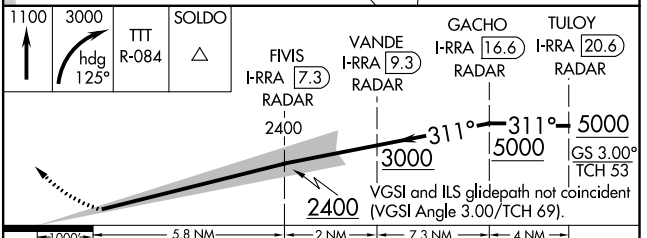
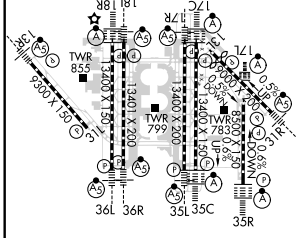
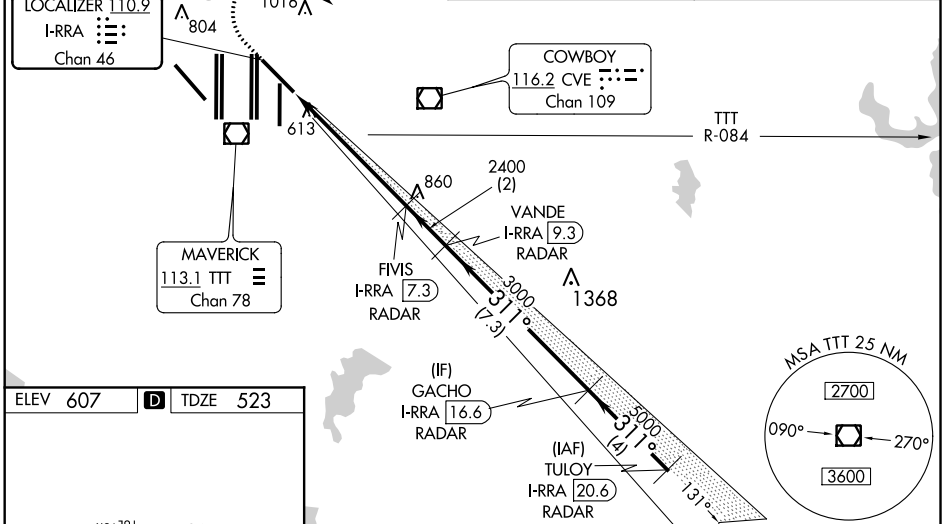
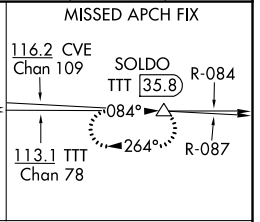
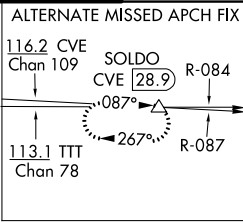
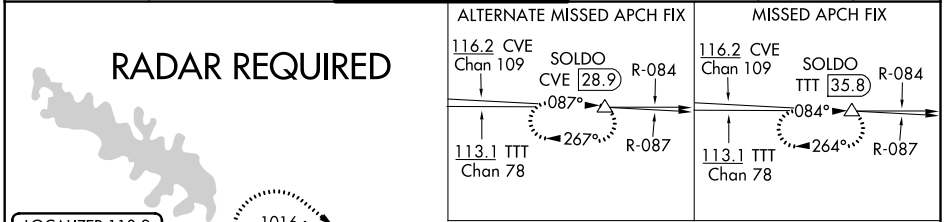
ILS RWY 31R (SA CAT I & CAT II)

DALLAS-FORT WORTH INTL (DFW)

Simultaneous approach authorized. DME required.
SA Cat I: Requires specific OPSPEC, MSPEC, or LOA approval and use of HUD to DH. SA Cat II: Reduced lighting: Requires specific OPSPEC, MSPEC, or LOA approval and use of autoland or HUD to touchdown.

MALS 
MISSED APPROACH: Climb to 1100 then climbing right turn to 3000 on heading 125° and TTT VOR/DME R-084 to SOLDO/TTT 35.8 DME and hold.

D-ATIS ARR 123.775 DEP 135.925	REGIONAL APP CON 135.5 125.2	DFW TOWER 126.55 127.5 EAST 124.15 134.9 WEST	GND CON 121.65 121.8 EAST 121.85 WEST	CLNC DEL 128.25	CPDLC
----------------------------------------------------	----------------------------------------	-------------------------------------------------------------------	-----------------------------------------------------------	---------------------------	-------



CATEGORY	A	B	C	D
S-ILS 31R	SA CAT I	RA 176/14 150 DA 673		
S-ILS 31R	SA CAT II	RA 121/12 100 DA 623		

SA CATEGORY I & II ILS SPECIAL AIRCREW & AIRCRAFT CERTIFICATION REQUIRED

SC-2, 15 JUL 2021 to 12 AUG 2021

SC-2, 15 JUL 2021 to 12 AUG 2021