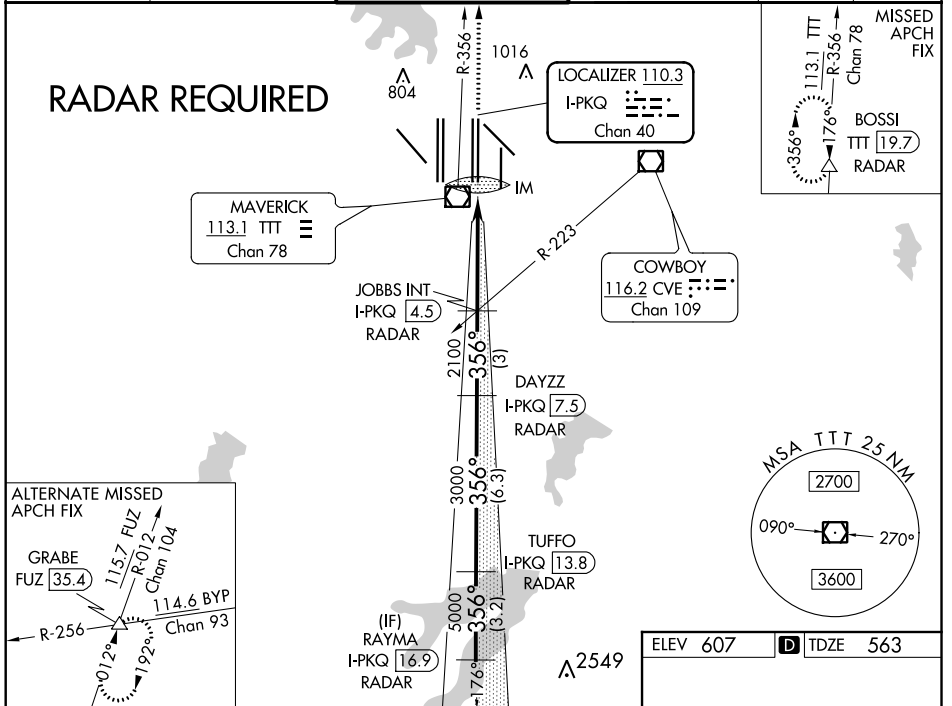


LOC/DME I-PKQ <b>110.3</b> Chan 40	APP CRS <b>356°</b>	Rwy Idg TDZE Apt Elev	<b>13400</b> <b>563</b> <b>607</b>
--	------------------------	-----------------------------	--

# ILS RWY 35C (CAT II & III)

DALLAS-FORT WORTH INTL (DFW)

D-ATIS ARR <b>123.775</b> DEP <b>135.925</b>		REGIONAL APP CON <b>127.075</b>	DFW TOWER <b>126.55 127.5</b> EAST <b>124.15 134.9</b> WEST	GND CON <b>121.65 121.8</b> EAST <b>121.85</b> WEST	CLNC DEL <b>128.25</b>	CPDLC
--	--	------------------------------------	---	---	---------------------------	-------



3000 TTT R-356	BOSSI △	VGSI and ILS glidepath not coincident (VGSI Angle 3.00/TCH 76).		TUFFO I-PKQ 13.8 RADAR	RAYMA I-PKQ 16.9 RADAR
IM 663	2100	3000	5000	6000	GS 3.00° TCH 59
-1050	4.6 NM	3 NM	6.3 NM	3.2 NM	
CATEGORY	A	B	C	D	
S-ILS 35C	CAT II RA 100/12 100 DA 663				
S-ILS 35C	CAT IIIa RVR 07				
S-ILS 35C	CAT IIIb RVR 06				
S-ILS 35C	CAT IIIc NA				

ELEV 607 TDZE 563

HIRL all Rwys  
REIL Rwys 13L and 31L  
TDZ/CL all Rwys except 13L and 31L

## CATEGORY II & III ILS - SPECIAL AIRCREW & AIRCRAFT CERTIFICATION REQUIRED

SC-2, 15 JUL 2021 to 12 AUG 2021

SC-2, 15 JUL 2021 to 12 AUG 2021