

LOC/DME I-LWN <b>109.5</b> Chan <b>32</b>	APP CRS <b>135°</b>	Rwy Idg TDZE Apt Elev <b>9300</b> <b>591</b> <b>607</b>
---	------------------------	--

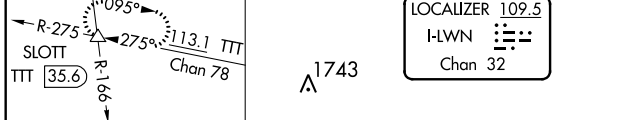
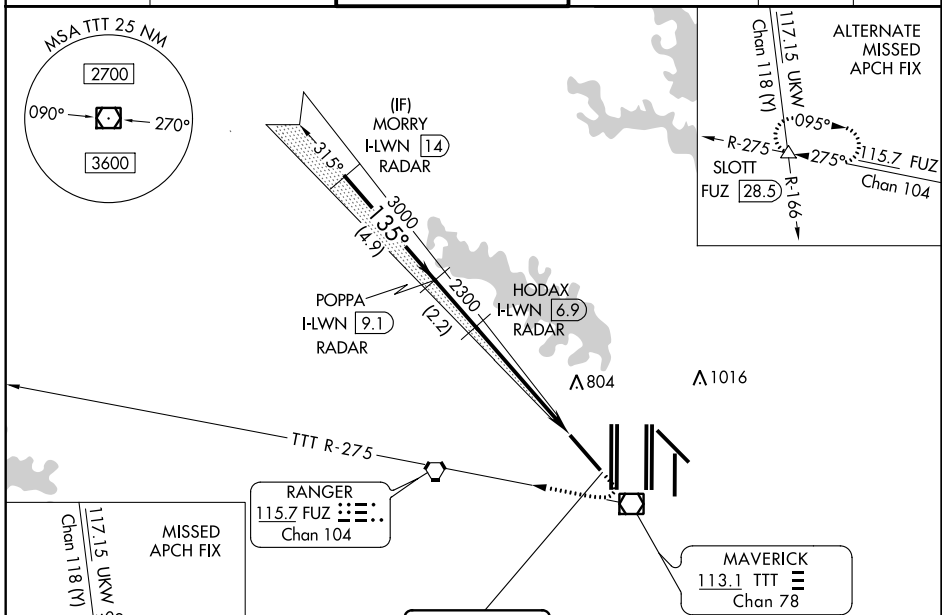
# ILS or LOC RWY 13R

## DALLAS-FORT WORTH INTL (DFW)

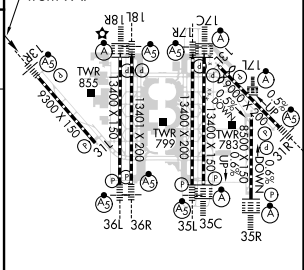
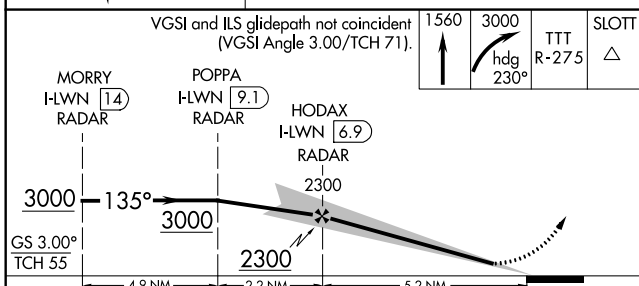
RADAR required for procedure entry.  
DME or RADAR required for LOC only.

MALS/R MISSED APPROACH: Climb to 1560 then climbing right turn to 3000 on heading 230° and TTT VOR/DME R-275 to SLOTT INT/TTT 35.6 DME and hold.

D-ATIS ARR <b>123.775</b> DEP <b>135.925</b>	REGIONAL APP CON <b>133.15 118.1</b>	DFW TOWER <b>126.55 127.5 EAST</b> <b>124.15 134.9 WEST</b>	GND CON <b>121.65 121.8 EAST</b> <b>121.85 WEST</b>	CLNC DEL <b>128.25</b>	CPDLC
--	---	---	---	---------------------------	-------



ELEV 607	D	TDZE 591
----------	---	----------



CATEGORY	A	B	C	D
S-ILS 13R	791/18		200 (200-½)	
S-LOC 13R	1240/24	649 (700-½)	1240-1⅓	649 (700-1⅓)

HIRL all Rwy's					
REL Rwy's 13L and 31L					
TDZ/CL all Rwy's except 13L, and 31L					
FAF to MAP 5.2 NM					
Knots	60	90	120	150	180
Min:Sec	5:12	3:28	2:36	2:05	1:44

SC-2, 15 JUL 2021 to 12 AUG 2021

SC-2, 15 JUL 2021 to 12 AUG 2021