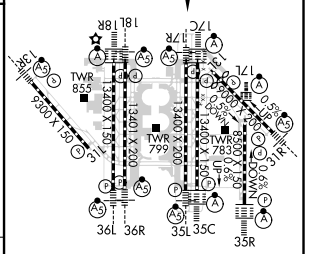
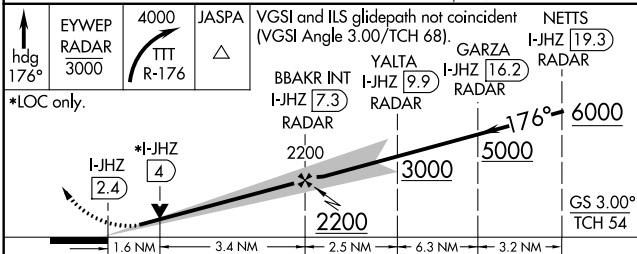
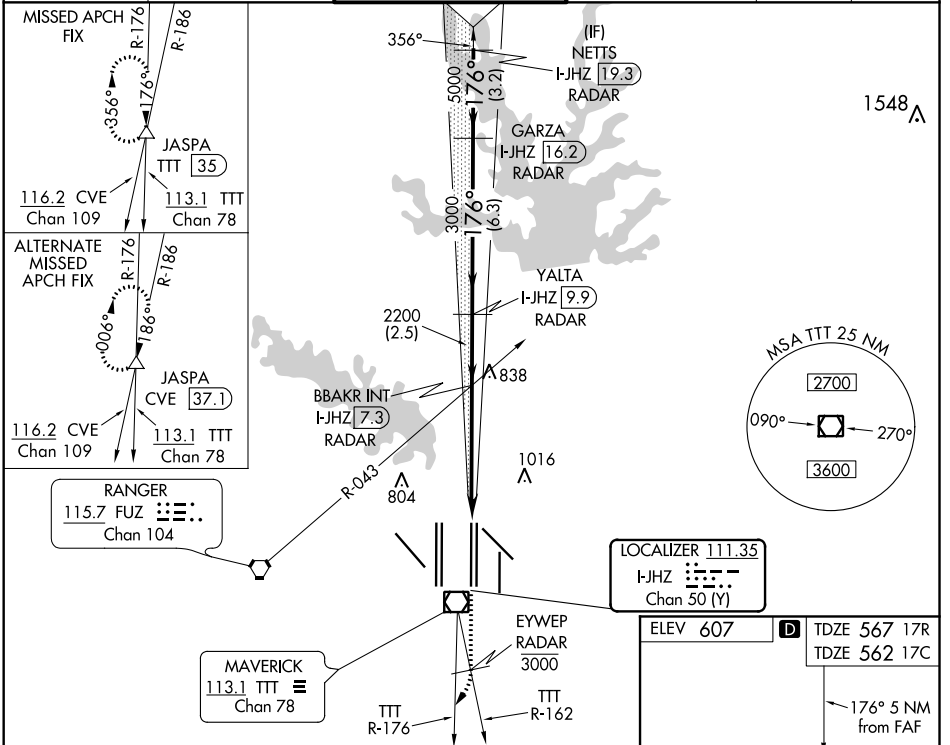


LOC/DME I-JHZ 111.35 Chan 50 (Y)	APP CRS 176°	Rwy 17R Idg 13400 TDZE 567 Apt Elev 607	Rwy 17C Idg 13400 TDZE 562 Apt Elev 607
---	------------------------	--	--

ILS or LOC RWY 17R

DALLAS-FORT WORTH INTL (DFW)

DME and RADAR required.		Rwy 17R MALSR	Rwy 17C ALSF-2	MISSED APPROACH: Climb on heading 176° to cross EYWEP/RADAR at or below 3000, then climbing right turn to 4000 on TTT VOR/DME R-176 to JASPA/TTT 35 DME and hold.		
Simultaneous approach authorized with Rwy 17L, 18L/R.						
D-ATIS ARR 123.775 DEP 135.925	REGIONAL APP CON 127.075	DFW TOWER 126.55 127.5 EAST 124.15 134.9 WEST		GND CON 121.65 121.8 EAST 121.85 WEST	CLNC DEL 128.25	CPDLC



CATEGORY	A	B	C	D
S-ILS 17R		767/18	200 (200-½)	
S-LOC 17R	1140/24	573 (600-½)	1140-1¼	573 (600-1¼)
SIDESTEP 17C	1140-1	578 (600-1)	1140-1½	1140-2 578 (600-2)

ELEV 607	D TDZE 567 17R TDZE 562 17C
176° 5 NM from FAF	

SC-2, 15 JUL 2021 to 12 AUG 2021

SC-2, 15 JUL 2021 to 12 AUG 2021