

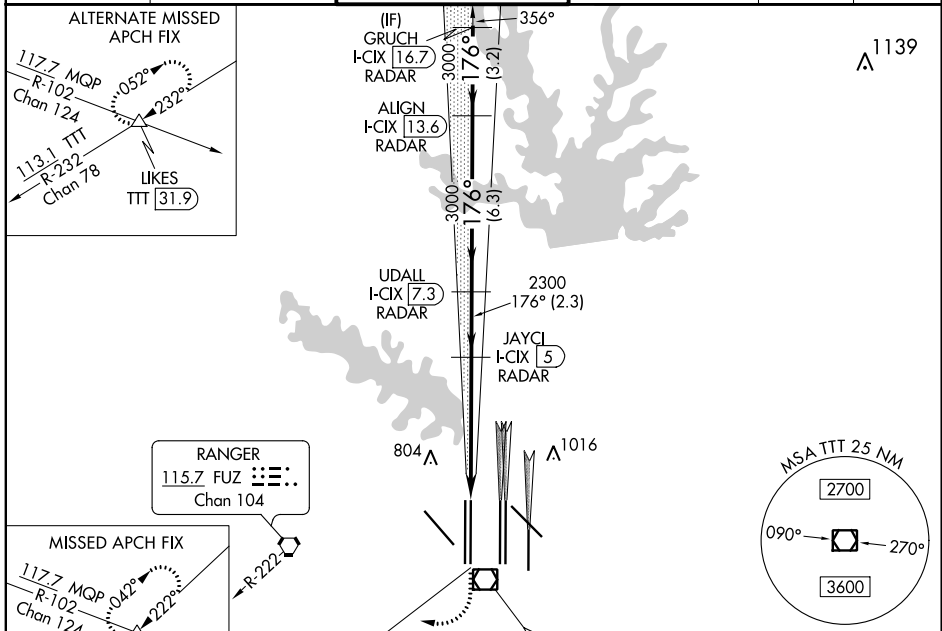
LOC/DME I-CIX 110.55 Chan 42 (Y)	APP CRS 176°	Rwy Idg TDZE Apt Elev	18L 13401 602 606	18R 13400 606 606
--	------------------------	-----------------------------	---	---

ILS or LOC RWY 18L

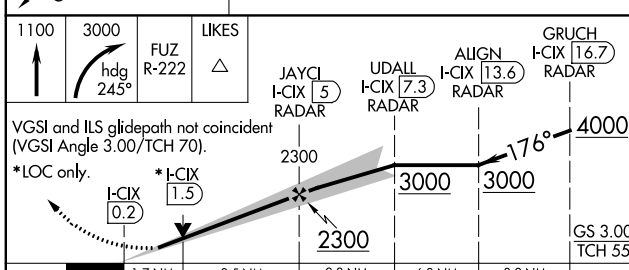
DALLAS-FORT WORTH INTL (DFW)

RADAR required for procedure entry. DME or RADAR required.		Rwy 18L MALSR	Rwy 18R ALSF-2	MISSED APPROACH: Climb to 1100, then climbing right turn to 3000 on heading 245° and FUE VORTAC R-222 to LIKES INT/FUZ 27 DME and hold.
⚠ Simultaneous approach authorized with Rwy 17L/C/R. For inop ALS, increase S-LOC 18L Cat C/D and Sidestep 18R Cat C/D visibility to 1 1/4 mile. Inop table does not apply to Sidestep 18R Cats A and B.				

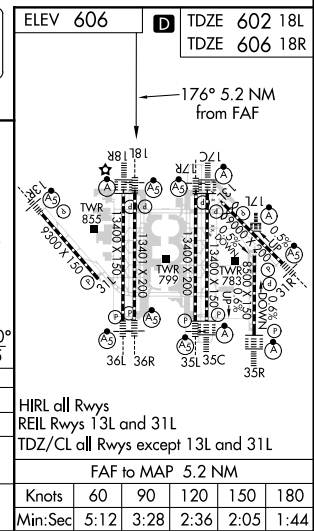
D-ATIS ARR 123.775 DEP 135.925	REGIONAL APP CON 118.425	DFW TOWER 126.55 127.5 EAST 124.15 134.9 WEST		GND CON 121.65 121.8 EAST 121.85 WEST	CLNC DEL 128.25	CPDLC
--	------------------------------------	---	--	---	---------------------------	-------



1100	3000	FUZ R-222	LIKES
↑	hdg 245°		△



CATEGORY	A	B	C	D
S-ILS 18L	802/18 200 (200-1/2)			
S-LOC 18L	1220/24	618 (700-1/2)	1220-1 3/8	618 (700-1 3/8)
SIDESTEP 18R	1220/50	614 (700-1)	1220-1 3/8	614 (700-1 3/8)



SC-2, 15 JUL 2021 to 12 AUG 2021

SC-2, 15 JUL 2021 to 12 AUG 2021