

LOC/DME I-PKQ 110.3 Chan 40	APP CRS 356°	Rwy 35C Idg 13400 TDZE 563 Apt Elev 607	Rwy 35L Idg 13400 TDZE 564 Apt Elev 607
--	------------------------	--	--

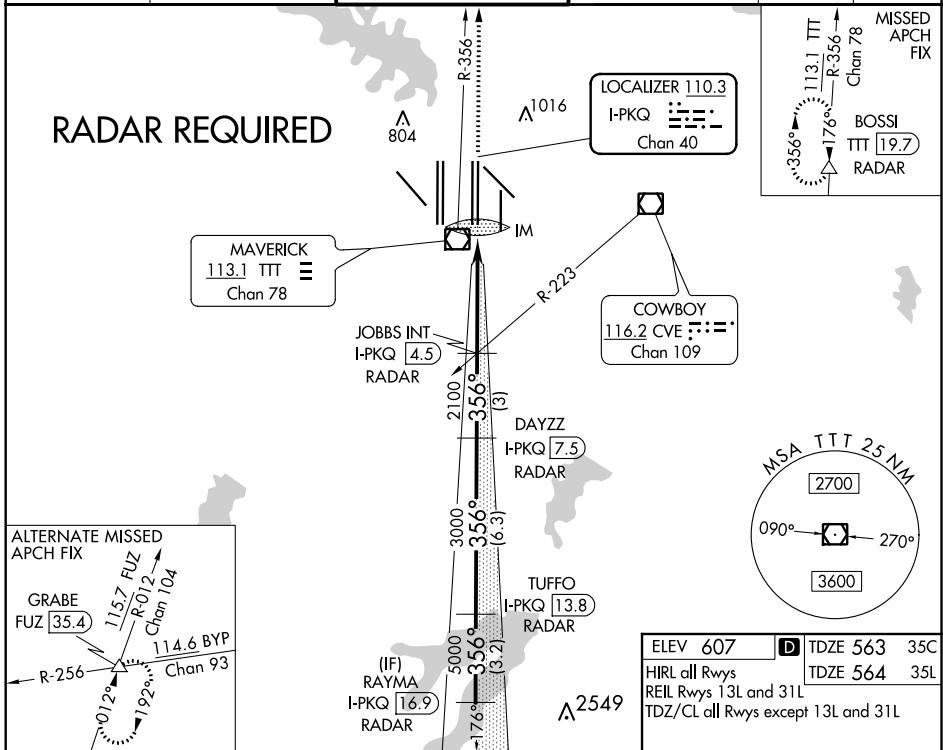
ILS or LOC RWY 35C

DALLAS-FORT WORTH INTL (DFW)

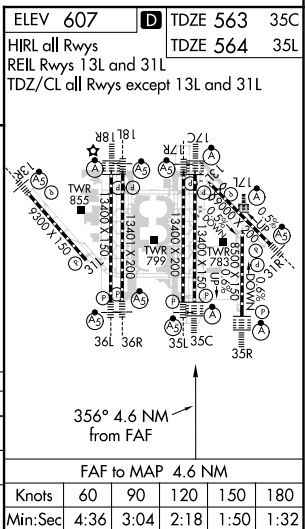
▼ Inoperative table does not apply to Sidestep Rwy 35L Cats A and B. DME or RADAR required. Simultaneous approach authorized with Rwy 35R, Rwy 36L/R.

Rwy 35C ALSF-2 **(A)** Rwy 35L MALSR **(AS)** MISSED APPROACH: Climb to 3000 on TTT VOR/DME R-356 to BOSSI/TTT 19.7 DME/RADAR and hold.

D-ATIS ARR 123.775 DEP 135.925	REGIONAL APP CON 127.075	DFW TOWER 126.55 127.5 EAST 124.15 134.9 WEST	GND CON 121.65 121.8 EAST 121.85 WEST	CLNC DEL 128.25	CPDLC
--	------------------------------------	---	---	---------------------------	-------



3000 ↑ TTT R-356	BOSSI △	VGSI and ILS glidepath not coincident (VGSI Angle 3.00/TCH 76).		RAYMA I-PKQ 16.9 RADAR
*LOC only	*I-PKQ 1	JOBBES INT I-PKQ 4.5 RADAR	DAYZZ I-PKQ 7.5 RADAR	TUFFO I-PKQ 13.8 RADAR
IM	2100	3000	5000	6000
0.1 NM	3.5 NM	3 NM	6.3 NM	3.2 NM
CATEGORY	A	B	C	D
S-ILS 35C	763/18		200 (200-½)	
S-LOC 35C	1000/24	437 (400-½)	1000/40	437 (400-¾)
SIDESTEP 35L	1000/55		436 (400-1)	
			1000-1½	
			436 (400-1½)	



SC-2, 15 JUL 2021 to 12 AUG 2021

SC-2, 15 JUL 2021 to 12 AUG 2021