

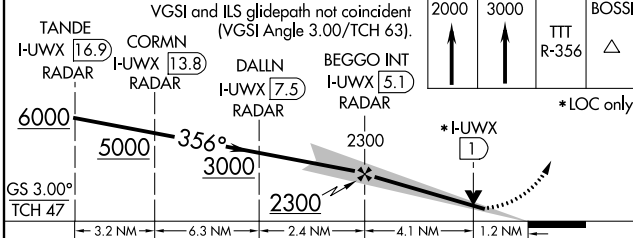
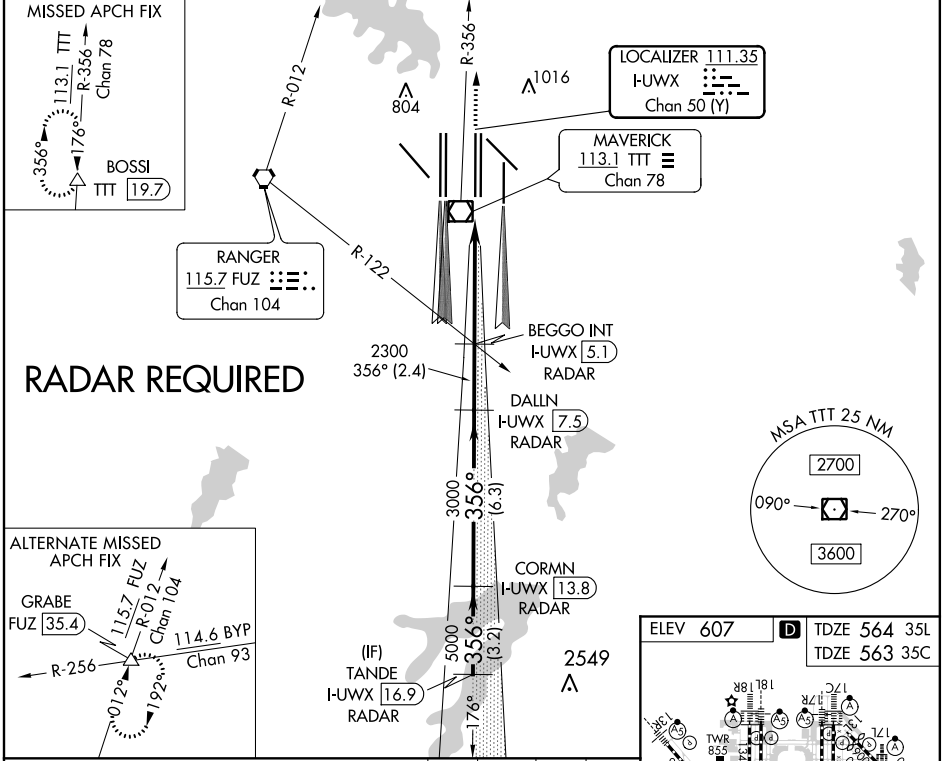
LOC/DME I-UWX <b>111.35</b> Chan <b>50 (Y)</b>	APP CRS <b>356°</b>	Rwy 35L Idg <b>13400</b> TDZE <b>564</b> Apt Elev <b>607</b>	Rwy 35C Idg <b>13400</b> TDZE <b>563</b> Apt Elev <b>607</b>
--	------------------------	--	--

# ILS or LOC RWY 35L

DALLAS-FORT WORTH INTL (DFW)

<p>▼ DME or RADAR required. Simultaneous approach authorized with Rwy 36 L/R and Rwy 35R. Inop table does not apply to Sidestep Rwy 35C.</p>	<p>Rwy 35L MALSR A<sub>3</sub></p>	<p>Rwy 35C ALSF-2 A<sub>1</sub></p>	<p>MISSED APPROACH: Climb to 2000 then climb to 3000 on TTT VOR/DME R-356 to BOSSI/TTT 19.7 DME and hold.</p>
--	--	---	---

D-ATIS ARR <b>123.775</b> DEP <b>135.925</b>	REGIONAL APP CON <b>127.075</b>	DFW TOWER <b>126.55 127.5 EAST</b> <b>124.15 134.9 WEST</b>	GND CON <b>121.65 121.8 EAST</b> <b>121.85 WEST</b>	CLNC DEL <b>128.25</b>	CPDLC
--	------------------------------------	---	---	---------------------------	-------



ELEV 607

TDZE 564 35L

TDZE 563 35C

HIRL all Rwys

REIL Rwys 13L and 31L

TDZ/CL all Rwys except 13L, and 31L

FAF to MAP 5.3 NM

Knots: 60, 90, 120, 150, 180

Min:Sec: 5:18, 3:32, 2:39, 2:07, 1:46

356° 5.3 NM from FAF

SC-2, 15 JUL 2021 to 12 AUG 2021

SC-2, 15 JUL 2021 to 12 AUG 2021