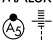


LOC/DME I-BXN 111.9 Chan 56	APP CRS 356°	Rwy 36L Idg 13400 TDZE 588 Apt Elev 607	Rwy 36R Idg 13401 TDZE 581 Apt Elev 607
---	------------------------	--	--

ILS or LOC RWY 36L

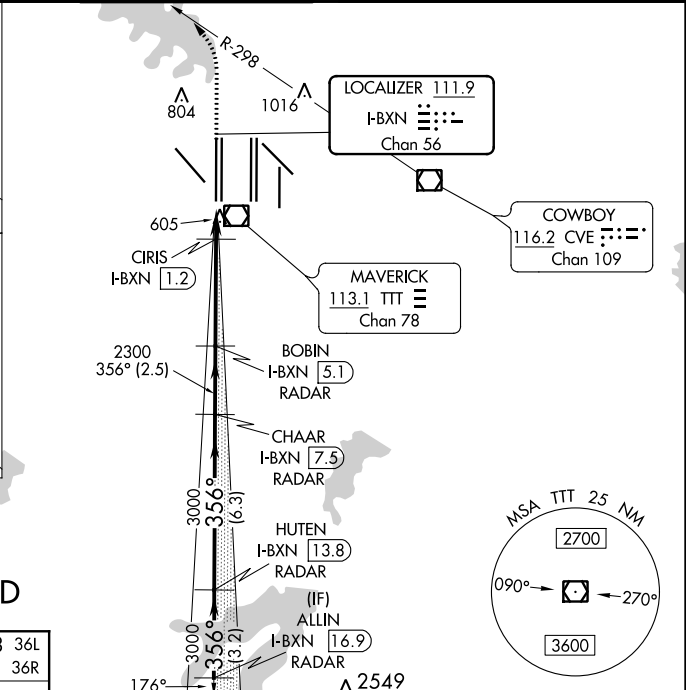
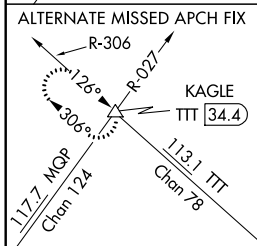
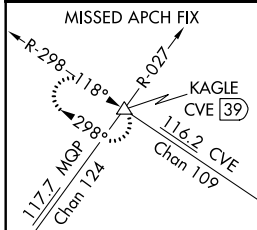
DALLAS-FORT WORTH INTL (DFW)

▼ Inop table does not apply to Sidestep 36R. Simultaneous approach authorized with Rwy 35L/C/R. DME or RADAR required. For inop ALS, increase S-LOC 36L Cat C and D visibility to 1/2 SM. For inop ALS, increase CIRIS fix minimums Cat C and D visibility to RVR 4500.

Rwys 36L/R
MALSR


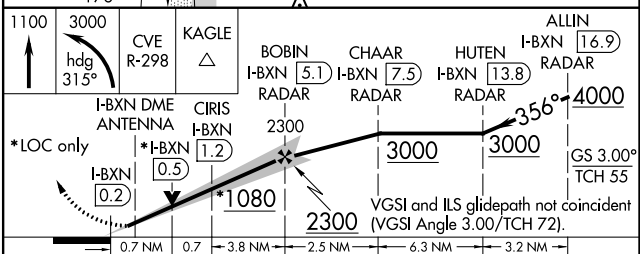
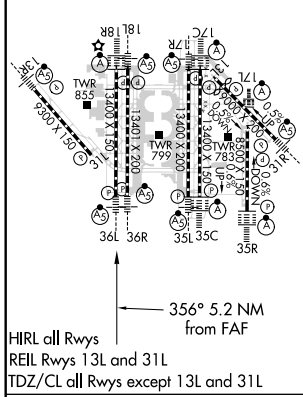
MISSED APPROACH: Climb to 1100 then climbing left turn to 3000 on heading 315° and CVE VOR/DME R-298 to KAGLE INT/ CVE VOR/DME 39 DME and hold.

D-ATIS ARR 123.775 DEP 135.925	REGIONAL APP CON 118.425	DFW TOWER 126.55 127.5 EAST 124.15 134.9 WEST	GND CON 121.65 121.8 EAST 121.85 WEST	CLNC DEL 128.25	CPDLC
--	------------------------------------	---	---	---------------------------	-------



RADAR REQUIRED

ELEV 607	D	TDZE 588 36L
		TDZE 581 36R



CATEGORY	A	B	C	D
S-ILS 36L	788/18 200 (200-1/2)			
S-LOC 36L	1080/24	492 (500-1/2)	1080/50	492 (500-1)
SIDESTEP 36R	1080/50	499 (500-1)	1080-1 1/2	499 (500-1 1/2)
CIRIS FIX MINIMUMS (DME required)				
S-LOC 36L	880/24 292 (300-1/2)			

SC-2, 15 JUL 2021 to 12 AUG 2021

SC-2, 15 JUL 2021 to 12 AUG 2021