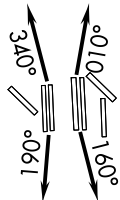


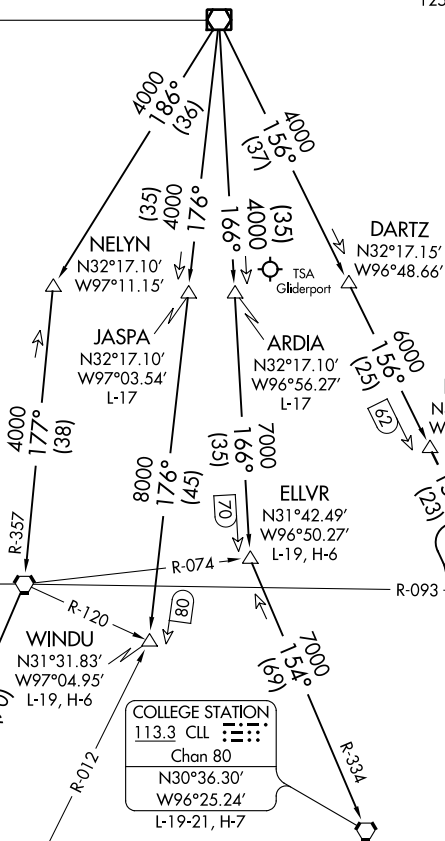
# JOE POOL THREE DEPARTURE

**TOP ALTITUDE:**  
**RWYS 13L/R, 17L/C/R, 18L/R,**  
**35L/C/R, 36L/R: 10000**  
**RWYS 31L/R: 5000**

D-ATIS DEP 135.925  
CLNC DEL 128.25  
CPDLC  
GND CON  
121.65 121.8 (EAST)  
121.85 (WEST)  
DFW TOWER  
126.55 127.5 (EAST)  
124.15 134.9 (WEST)  
REGIONAL DEP CON  
125.125 353.95 (Rwys 17C/R, 18L/R)  
126.475 363.15 (Rwys 36R/L)  
118.55 290.35 (Rwys 35L/C)



**MAVERICK**  
113.1 TTT  
Chan 78  
N32°52.15'  
W97°02.43'



**WACO**  
115.3 ACT  
Chan 100  
N31°39.73'  
W97°16.14'  
L-19, H-6

**WINDU**  
N31°31.83'  
W97°04.95'  
L-19, H-6

**COLLEGE STATION**  
113.3 CLL  
Chan 80  
N30°36.30'  
W96°25.24'  
L-19-21, H-7

**HOARY**  
N30°34.63'  
W97°46.52'  
L-19-21, H-7

**CENTEX**  
112.8 CWK  
Chan 75

**SAN ANTONIO**  
116.8 SAT  
Chan 115  
N29°38.64'-W98°27.68'  
L-19, H-7

**NAVASOTA**  
115.9 TNV  
Chan 106

NOTE: RADAR and DME required.  
NOTE: Props: Expect KEENE or TRI-GATE departure.  
NOTE: Maintain 240K until leaving 5000.

**TAKEOFF MINIMUMS**  
Rwys 13L/R, 17L/C/R, 18L/R, 31L/R,  
35L/C, 36L/R: Standard.  
Rwy 35R: Standard with a minimum climb  
of 240' per NM to 1200.

(NARRATIVE ON FOLLOWING PAGE)

NOTE: Chart not to scale.

SC-2, 15 JUL 2021 to 12 AUG 2021

SC-2, 15 JUL 2021 to 12 AUG 2021

# JOE POOL THREE DEPARTURE