

KUSSO EIGHT DEPARTURE (RNAV)

DALLAS-FORT WORTH, TEXAS

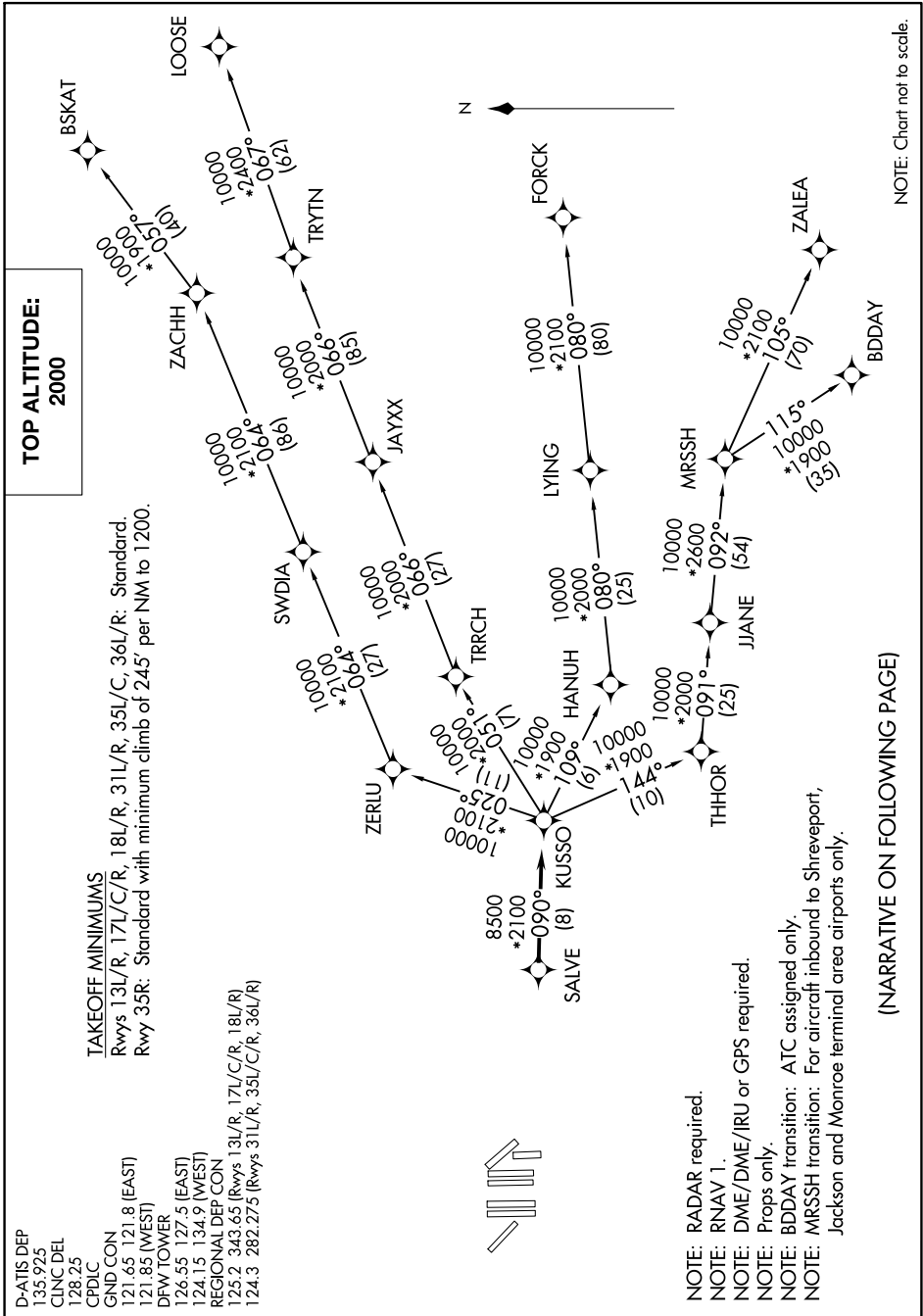
SC-2, 15 JUL 2021 to 12 AUG 2021

D-ATIS DEP
135.925
CLNC DEL
128.25
CPDLC
GND CON
121.65 121.8 (EAST)
121.85 (WEST)
DFW TOWER
126.55 127.5 (EAST)
124.15 134.9 (WEST)
REGIONAL DEP CON
125.2 343.65 (Rwys 13L/R, 17L/C/R, 18L/R)
124.3 282.275 (Rwys 31L/R, 35L/C/R, 36L/R)

TAKEOFF MINIMUMS

Rwys 13L/R, 17L/C/R, 18L/R, 31L/R, 35L/C, 36L/R: Standard.
Rwy 35R: Standard with minimum climb of 245' per NM to 1200.

**TOP ALTITUDE:
2000**



NOTE: RADAR required.

NOTE: RNAV 1.

NOTE: DME/DME/IRU or GPS required.

NOTE: Props only.

NOTE: BDDAY transition: ATC assigned only.

NOTE: MRSSH transition: For aircraft inbound to Shreveport, Jackson and Monroe terminal area airports only.

(NARRATIVE ON FOLLOWING PAGE)

NOTE: Chart not to scale.

KUSSO EIGHT DEPARTURE (RNAV)

(KUSSO8.KUSSO) 17JUN21

DALLAS-FORT WORTH, TEXAS

DALLAS-FORT WORTH INTL (DFW)

SC-2, 15 JUL 2021 to 12 AUG 2021