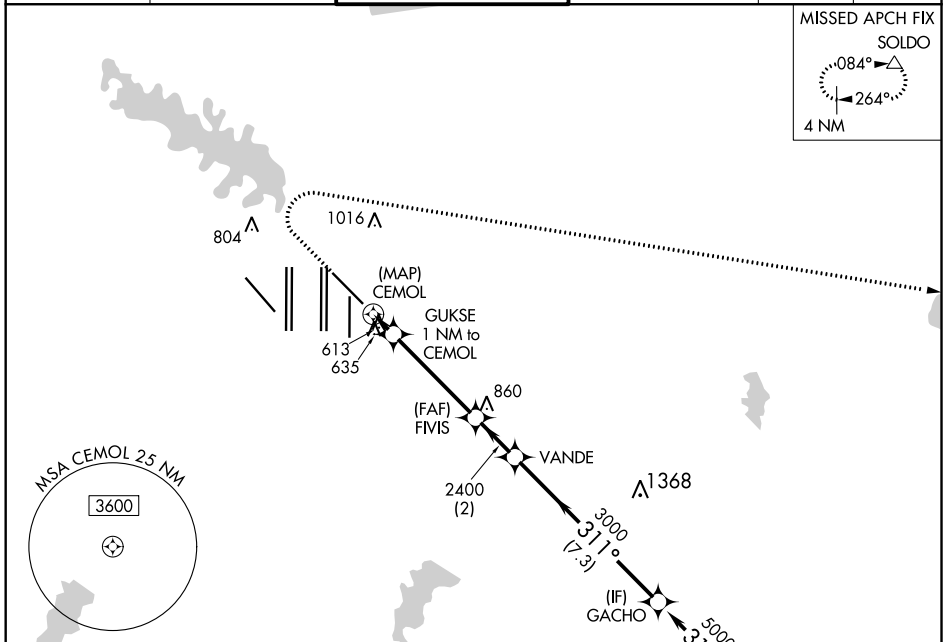
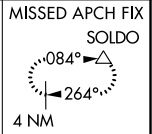


WAAS CH 90342 W31B	APP CRS 311°	Rwy Idg 8373 TDZE 523 Apt Elev 607
--	------------------------	---

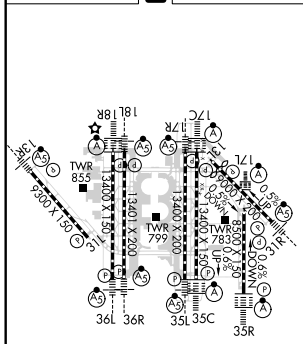
RNAV (GPS) Y RWY 31R

DALLAS-FORT WORTH INTL (DFW)

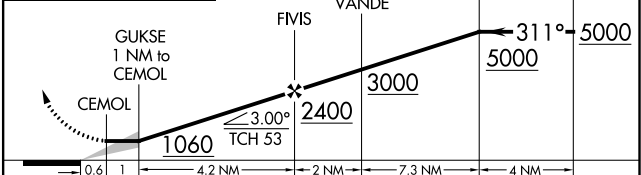
RNP APCH. For inop ALS, increase LP Cat C/D visibility to RVR 5500 and LNAV Cat C/D visibility to RVR 6000.		MALSR 	MISSED APPROACH: Climb to 1000 then climbing right turn to 3000 direct SOLDO and hold.		
D-ATIS ARR 123.775 DEP 135.925	REGIONAL APP CON 135.5 125.2	DFW TOWER 126.55 127.5 EAST 124.15 134.9 WEST	GND CON 121.65 121.8 EAST 121.85 WEST	CLNC DEL 128.25	CPDLC



ELEV 607	D	TDZE 523
-----------------	----------	-----------------



1000	3000	SOLDO	VGSI and descent angles not coincident (VGSI Angle 3.00/TCH 69).



CATEGORY	A	B	C	D
LP MDA	880/24	357 (300-1/2)	880/30	357 (300-5/8)
LNAV MDA	940/24	417 (400-1/2)	940/40	417 (400-3/4)

HIRL all Rwys
REIL Rwys 13L and 31L
TDZ/CL all Rwys except 13L and 31L

SC-2, 15 JUL 2021 to 12 AUG 2021

SC-2, 15 JUL 2021 to 12 AUG 2021