

TEXOMA ONE DEPARTURE

D-ATIS DEP 135.925
 CLNC DEL 128.25
 CPDLC
 GND CON 121.65 121.8 (EAST) 121.85 (WEST)
 DFW TOWER 126.55 127.5 (EAST) 124.15 134.9 (WEST)
 REGIONAL DEP CON
 118.55 290.35 (Rwy 17C/R)
 126.475 363.15 (Rwy 18L/R)
 125.125 353.95 (Rwy 36L/R)
 125.125 353.95 (Rwy 35L/C)

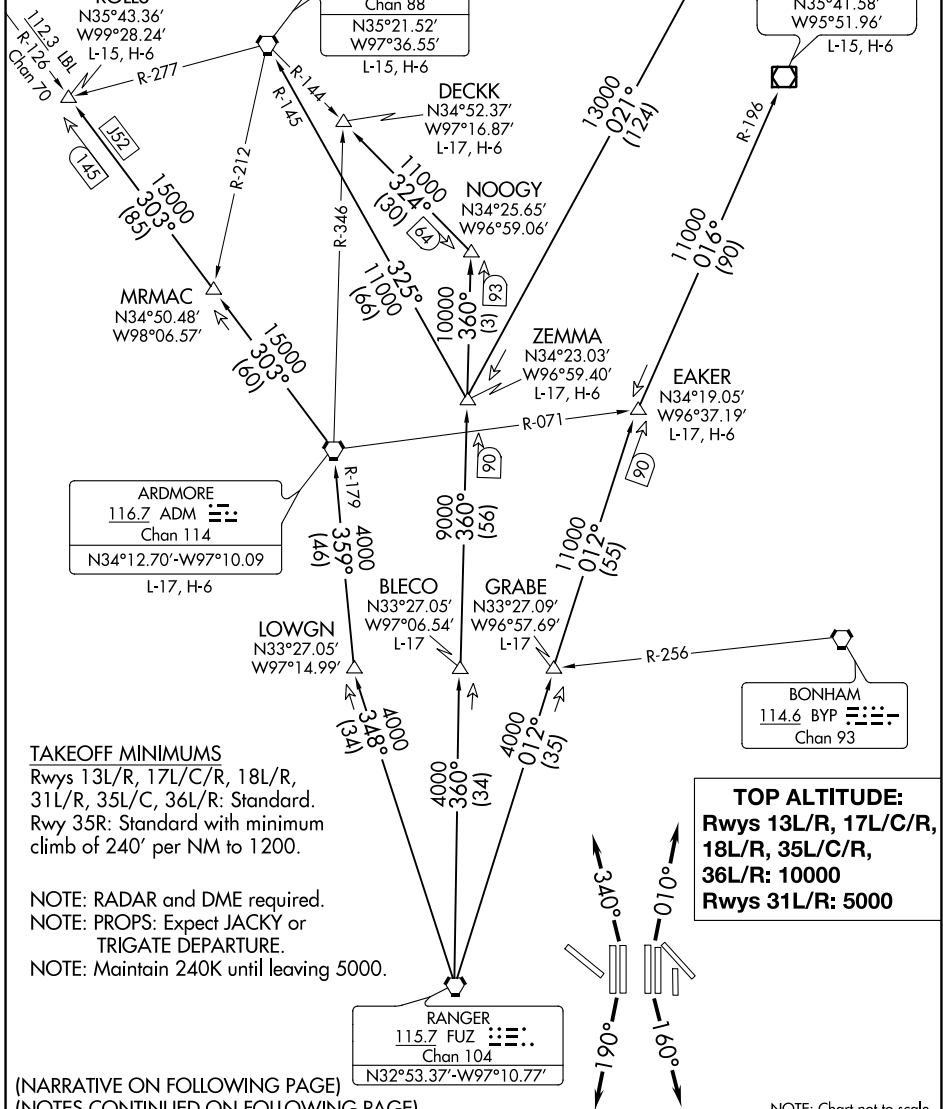
ROLLS

N35°43.36'
 W99°28.24'
 L-15, H-6

WILL ROGERS
 114.1 IRW
 Chan 88
 N35°21.52'
 W97°36.55'
 L-15, H-6

TULSA
 114.4 TUL
 Chan 91
 N36°11.78'
 W95°47.29'
 L-15, H-6

OKMULGEE
 114.9 OKM
 Chan 96
 N35°41.58'
 W95°51.96'
 L-15, H-6



ARDMORE
 116.7 ADM
 Chan 114
 N34°12.70'-W97°10.09'
 L-17, H-6

RANGER
 115.7 FUZ
 Chan 104
 N32°53.37'-W97°10.77'

TOP ALTITUDE:
 Rws 13L/R, 17L/C/R,
 18L/R, 35L/C/R,
 36L/R: 10000
 Rws 31L/R: 5000

TAKEOFF MINIMUMS
 Rws 13L/R, 17L/C/R, 18L/R,
 31L/R, 35L/C, 36L/R: Standard.
 Rwy 35R: Standard with minimum
 climb of 240' per NM to 1200.

NOTE: RADAR and DME required.
 NOTE: PROPS: Expect JACKY or
 TRIGATE DEPARTURE.
 NOTE: Maintain 240K until leaving 5000.

(NARRATIVE ON FOLLOWING PAGE)
 (NOTES CONTINUED ON FOLLOWING PAGE)

NOTE: Chart not to scale.

TEXOMA ONE DEPARTURE

SC-2, 15 JUL 2021 to 12 AUG 2021

SC-2, 15 JUL 2021 to 12 AUG 2021