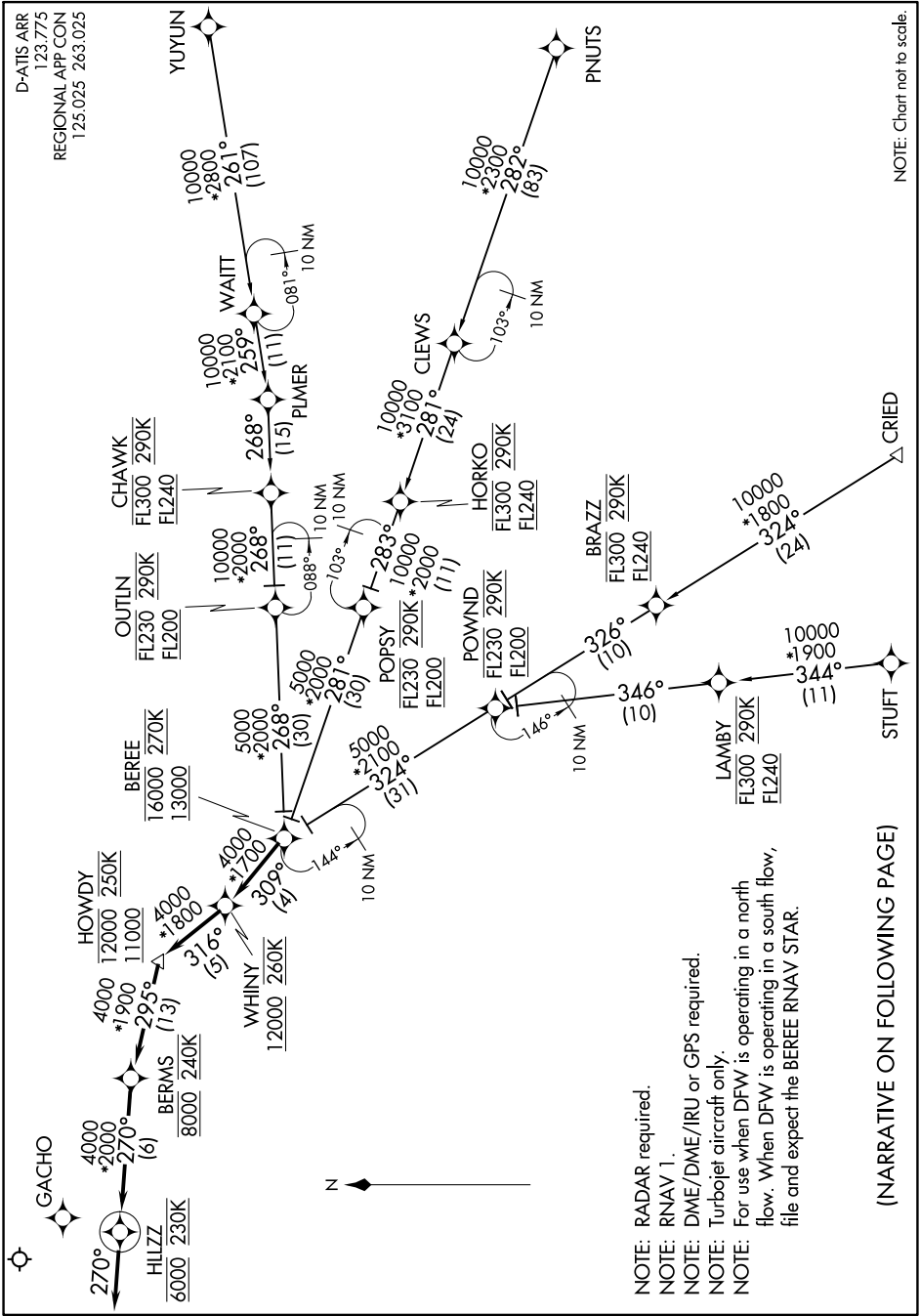


WHINY FOUR ARRIVAL (RNAV)

D-ATIS ARR
123.775
REGIONAL APP CON
125.025 263.025

SC-2, 15 JUL 2021 to 12 AUG 2021



NOTE: Chart not to scale.

- NOTE: RADAR required.
- NOTE: RNAV 1.
- NOTE: DME/DME/IRU or GPS required.
- NOTE: Turbojet aircraft only.
- NOTE: For use when DFW is operating in a north flow. When DFW is operating in a south flow, file and expect the BEREE RNAV STAR.

(NARRATIVE ON FOLLOWING PAGE)

SC-2, 15 JUL 2021 to 12 AUG 2021

WHINY FOUR ARRIVAL (RNAV)