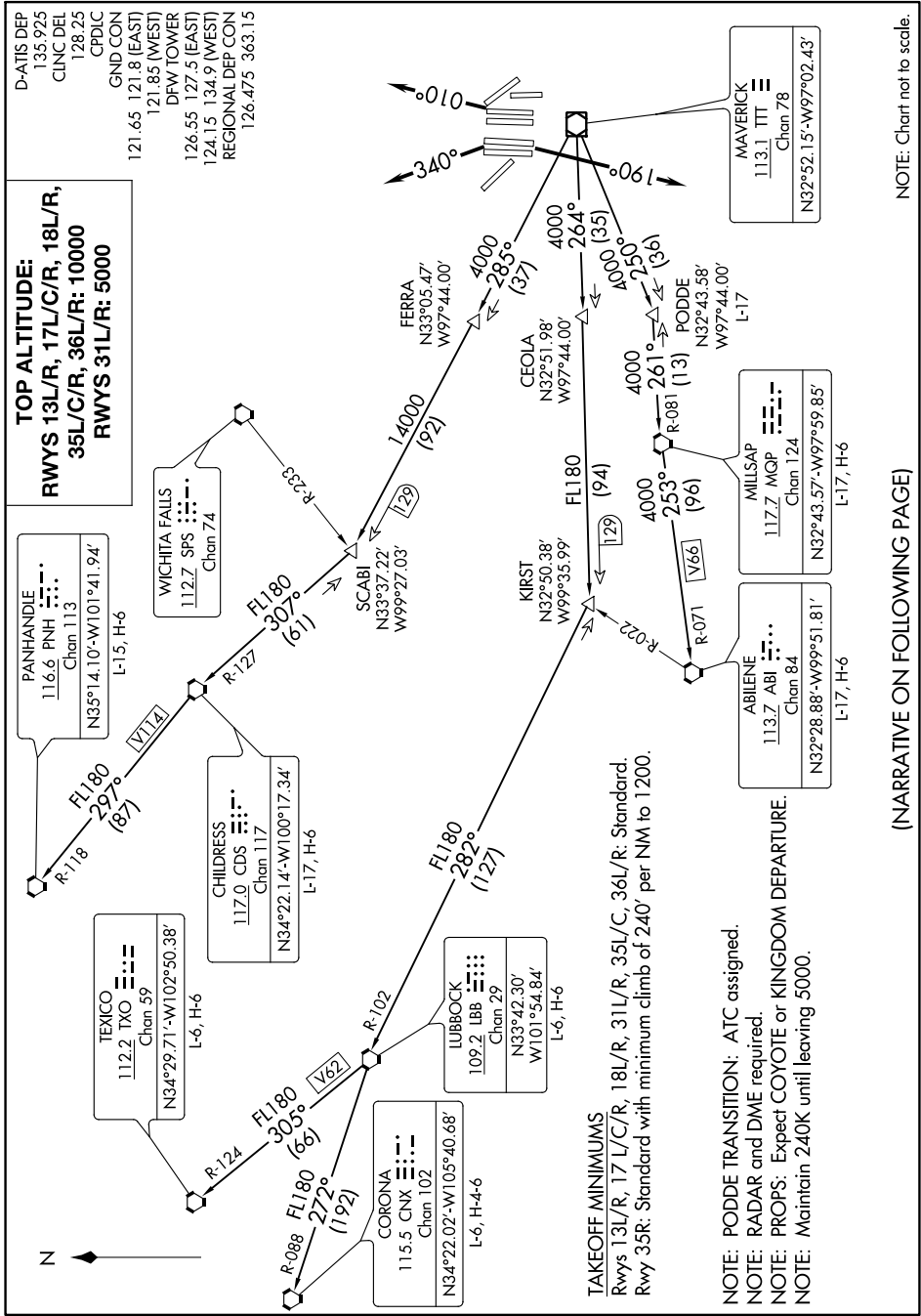


WORTH SIX DEPARTURE

SC-2, 15 JUL 2021 to 12 AUG 2021



TOP ALTITUDE:
 RWYS 13L/R, 17L/C/R, 18L/R,
 35L/C/R, 36L/R: 10000
 RWYS 31L/R: 5000

PANHANDLE
 116.6 PNH
 Chn 113
 N35°14.10'-W101°41.94'
 L-15, H-6

WICHITA FALLS
 112.7 SFS
 Chn 74

CHILDRESS
 117.0 CDS
 Chn 117
 N34°22.14'-W100°17.34'
 L-17, H-6

TEXICO
 112.2 TXO
 Chn 59
 N34°29.71'-W102°50.38'
 L-6, H-6

CORONA
 115.5 CNX
 Chn 102
 N34°22.02'-W105°40.68'
 L-6, H-4-6

LUBBOCK
 109.2 LBB
 Chn 29
 N33°42.30'
 W101°54.84'
 L-6, H-6

MILLSAP
 117.7 MQP
 Chn 124
 N32°43.57'-W97°59.85'
 L-17, H-6

ABILENE
 113.7 ABI
 Chn 84
 N32°28.88'-W99°51.81'
 L-17, H-6

MAYVERICK
 113.1 TTT
 Chn 78
 N32°52.15'-W97°02.43'

TAKEOFF MINIMUMS

Rwys 13L/R, 17L/C/R, 18L/R, 31L/R, 35L/C, 36L/R: Standard.
 Rwy 35R: Standard with minimum climb of 240' per NM to 1200.

- NOTE: PODDE TRANSITION: ATC assigned.
- NOTE: RADAR and DME required.
- NOTE: PROPS: Expect COYOTE or KINGDOM DEPARTURE.
- NOTE: Maintain 240K until leaving 5000.

(NARRATIVE ON FOLLOWING PAGE)

NOTE: Chart not to scale.

SC-2, 15 JUL 2021 to 12 AUG 2021

WORTH SIX DEPARTURE