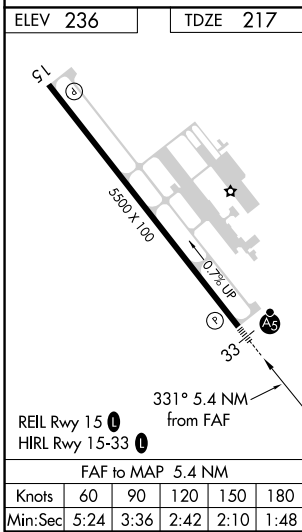
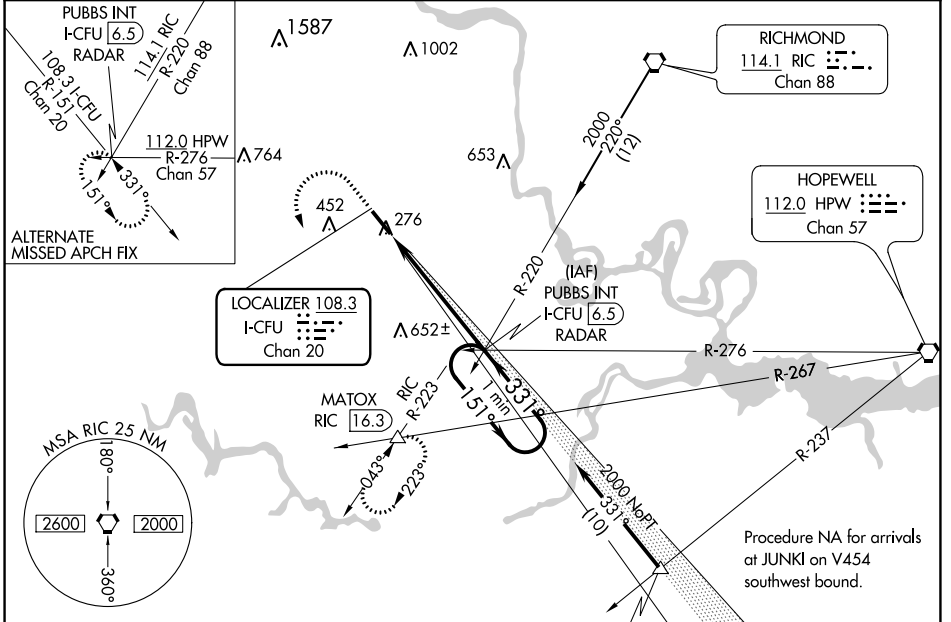


LOC/DME I-CFU <b>108.3</b> Chan 20	APP CRS <b>331°</b>	Rwy ldg 5500 TDZE 217 Apt Elev 236
--	------------------------	---

# ILS or LOC RWY 33

RICHMOND EXECUTIVE-CHESTERFIELD COUNTY (F'CI)

<p><b>▼</b> When local altimeter setting not received, use Richmond Intl altimeter setting and increase all DA 36 feet and all MDA 40 feet; increase S-LOC 33 Cat C and D visibility 1/8 mile. VDP NA with Richmond Intl altimeter setting.</p> <p><b>▲ NA</b></p>	<p><b>MALSR</b></p>	<p><b>MISSED APPROACH:</b> Climb to 800, then climbing left turn to 2000 via heading 148° and RIC VORTAC R-223 to MATOX INT/RIC 16.3 DME and hold.</p>	
<p><b>AWOS-3PT</b> 128.625</p>	<p><b>POTOMAC APP CON</b> 126.75 307.2</p>	<p><b>CLNC DEL</b> 124.6</p>	<p><b>UNICOM</b> 123.05 (CTAF) <b>0</b></p>



800	2000	RIC R-223	MATOX	PUBBS INT I-CFU [6.5] RADAR	One Minute Holding Pattern
hdg 148°					
*LOC only.					
I-CFU [1.1]	I-CFU [2.4]			151° → 2000	← 331° 2000
1.3 NM		4.1 NM		GS 3.00° TCH 49	
CATEGORY	A	B	C	D	
S-ILS 33	417-1/2		200 (200-1/2)		
S-LOC 33	660-1/2	443 (500-1/2)	660-7/8	443 (500-7/8)	
CIRCLING	720-1	484 (500-1)	760-1/2	800-2	564 (600-2)

NE-3, 15 JUL 2021 to 12 AUG 2021

NE-3, 15 JUL 2021 to 12 AUG 2021