

WAAS CH <b>63216</b> <b>W15A</b>	APP CRS <b>151°</b>	Rwy Idg <b>5500</b> TDZE <b>236</b> Apt Elev <b>236</b>
--	------------------------	---

# RNAV (GPS) RWY 15

RICHMOND EXECUTIVE-CHESTERFIELD COUNTY (F'CI)

RNP APCH.

**NA** For uncompensated Baro-VNAV systems, LNAV/VNAV NA below -15°C or above 54°C. When local altimeter setting not received, use Richmond Intl altimeter setting and increase all DA 36 feet, and all MDA 40 feet, increase LNAV/VNAV all Cats visibility 1/4 mile. VDP and Baro-VNAV NA when using Richmond Intl altimeter setting.

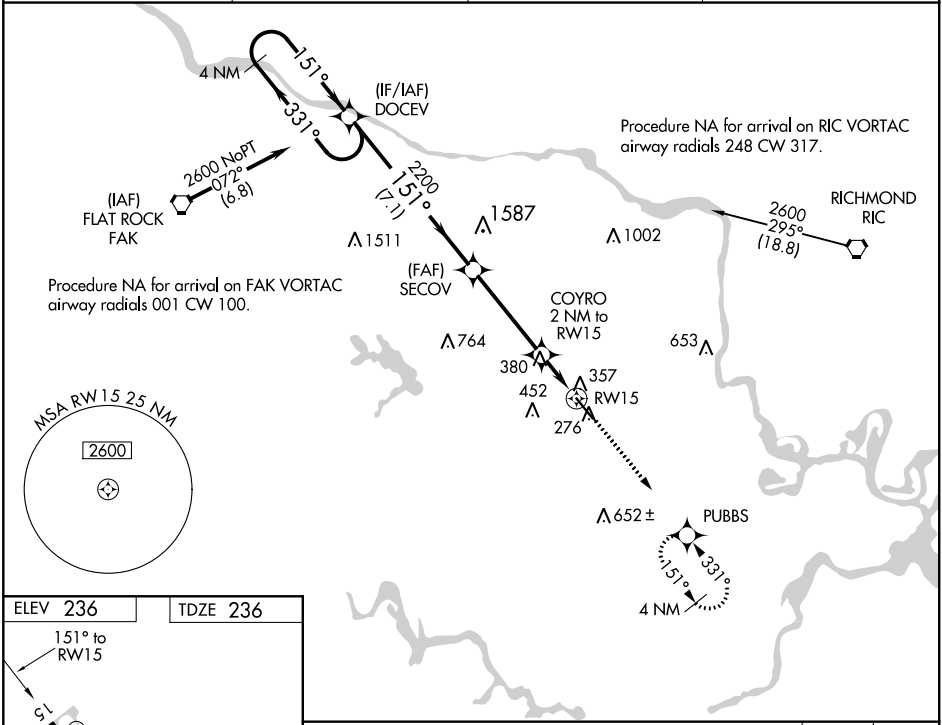
MISSED APPROACH: Climb to 2000 direct PUBBS and hold.

AWOS-3PT  
**128.625**

POTOMAC APP CON  
**126.75 307.2**

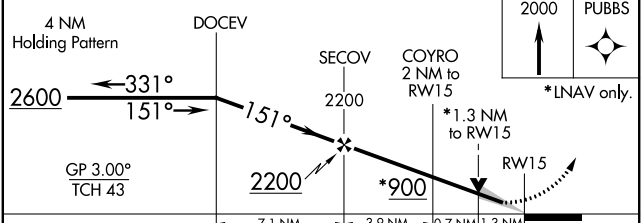
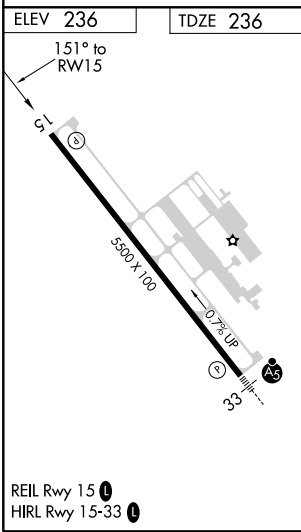
CLNC DEL  
**124.6**

UNICOM  
**123.05 (CTAF)**



NE-3, 15 JUL 2021 to 12 AUG 2021

NE-3, 15 JUL 2021 to 12 AUG 2021



CATEGORY	A	B	C	D
LPV DA	486-1 250 (300-1)			
LNAV/VNAV DA	692-1½ 456 (500-1½)			
LNAV MDA	680-1 444 (500-1)	680-1⅜ 444 (500-1⅜)	680-1½ 444 (500-1½)	