

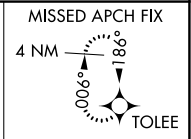
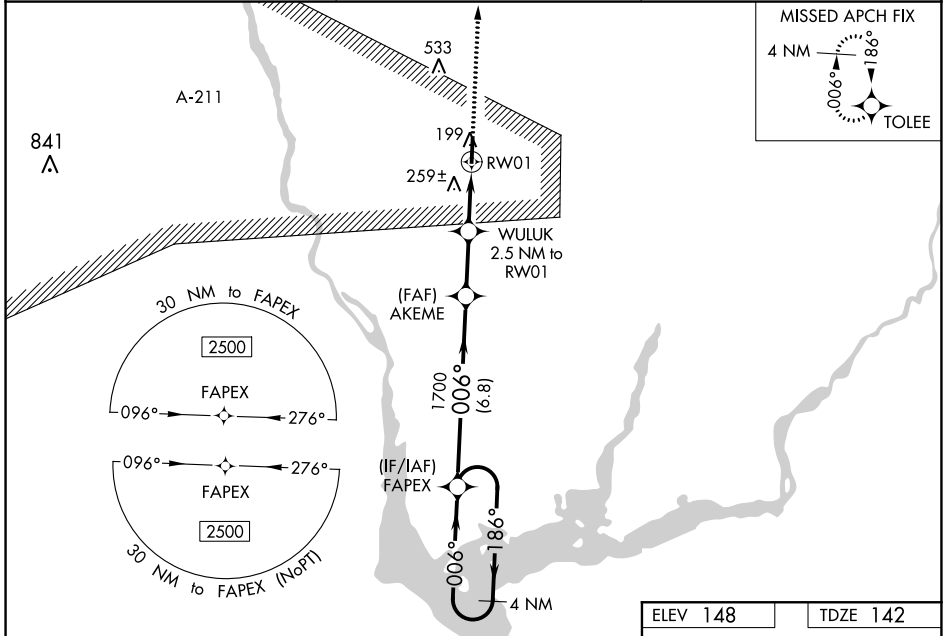
WAAS CH <b>66025</b> <b>W01A</b>	APP CRS <b>006°</b>	Rwy Idg <b>5512</b> TDZE <b>142</b> Apt Elev <b>148</b>
--	------------------------	---

# RNAV (GPS) RWY 1

DONALSONVILLE MUNI (17J)

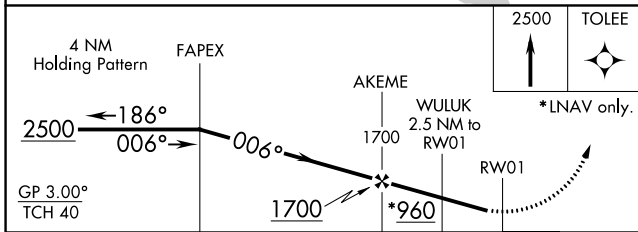
RNP APCH.	<p><b>⚠</b> Baro-VNAV NA when using Bainbridge altimeter setting. For uncompensated Baro-VNAV systems, LNAV/VNAV NA below -15°C (5°F) or above 54°C (130°F). Rwy 1 helicopter visibility reduction below 1 SM NA. When local altimeter setting not received, use Bainbridge altimeter setting. Straight-in Rwy 1 and Circling Rwy 1 NA at night.</p>	MISSED APPROACH: Climb to 2500 direct TOLEE and hold.
-----------	--	--

AWOS-3PT <b>119.675</b>	CAIRNS APP CON ★ <b>125.4 327.125</b>	CTAF <b>122.9</b>
----------------------------	--	----------------------



SE-4, 15 JUL 2021 to 12 AUG 2021

SE-4, 15 JUL 2021 to 12 AUG 2021



ELEV 148	TDZE 142
----------	----------

CATEGORY	A	B	C	D
LPV DA		443-1	301 (300-1)	
LNAV/VNAV DA		593-1½	451 (500-1½)	
LNAV MDA	540-1	398 (400-1)	540-1½	398 (400-1½)
<b>C</b> CIRCLING	640-1	492 (500-1)	880-2 732 (800-2)	880-2¼ 732 (800-2¼)

