

WAAS CH <b>40314</b> <b>W35A</b>	APP CRS <b>352°</b>	Rwy Idg TDZE Apt Elev	<b>5502</b> <b>2189</b> <b>2189</b>
--	------------------------	-----------------------------	---

# RNAV (GPS) RWY 35

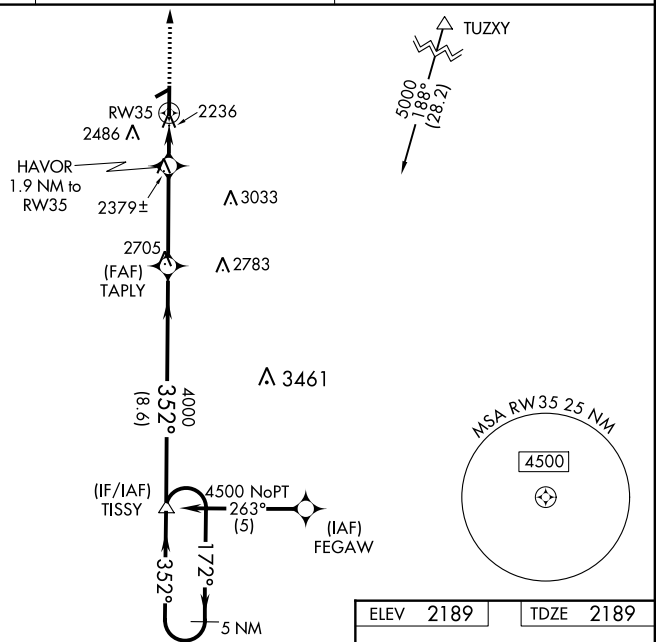
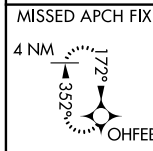
WEST WOODWARD (WWR)

RNP APCH.

**▼** Baro-VNAV NA when using Gage altimeter setting. For uncompensated Baro-VNAV systems, LNAV/VNAV NA below -19°C or above 54°C. When local altimeter setting not received, use Gage altimeter setting and increase all DA/MDA 40 feet and increase LNAV Cat C and D visibility to 1 $\frac{1}{2}$  SM. Circling Rwy 5, 23 NA at night.

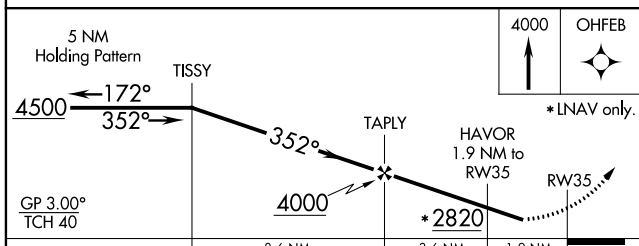
**MISSED APPROACH:**  
Climb to 4000 direct  
OHFEB and hold.

AWOS-3 <b>118.425</b>	KANSAS CITY CENTER <b>126.95 379.2</b>	UNICOM <b>122.8 (CTAF) 0</b>
--------------------------	---	---------------------------------



SC-1, 15 JUL 2021 to 12 AUG 2021

SC-1, 15 JUL 2021 to 12 AUG 2021



ELEV	2189	TDZE	2189
------	------	------	------

CATEGORY	A	B	C	D
LPV DA	2470-1		281 (300-1)	
LNAV/VNAV DA	2506-1 $\frac{1}{4}$		317 (400-1 $\frac{1}{4}$ )	
LNAV MDA	2700-1 511 (600-1)		2700-1 $\frac{1}{2}$ 511 (600-1 $\frac{1}{2}$ )	
CIRCLING	2700-1 511 (600-1)		2860-2 671 (700-2)	2860-2 $\frac{1}{4}$ 671 (700-2 $\frac{1}{4}$ )

