

WAAS CH 86826 W05A	APP CRS 052°	Rwy Idg TDZE Apt Elev	6202 577 577
--	------------------------	-----------------------------	---

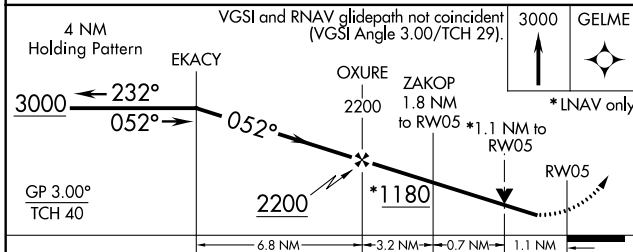
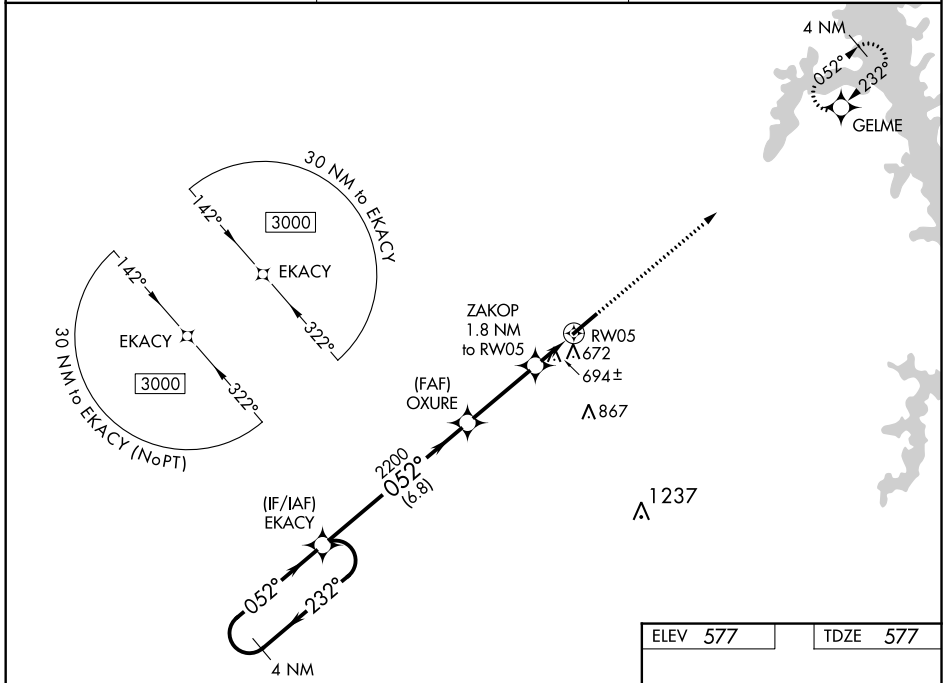
RNAV (GPS) RWY 5

KYLE-OAKLEY FIELD (CEY)

⚠ When local altimeter setting not received use Mayfield altimeter setting: increase all DA/MDA 40 feet, and increase LPV, LNAV/VNAV all Cats, and LNAV Cats C and D visibility $\frac{1}{8}$ mile. For uncompensated Baro-VNAV systems, LNAV/VNAV NA below -16°C (4°F) or above 54°C (130°F). DME/DME RNP-0.3 NA. Helicopter visibility reduction below $\frac{3}{4}$ SM NA. VDP and Baro-VNAV NA when using Mayfield altimeter setting.

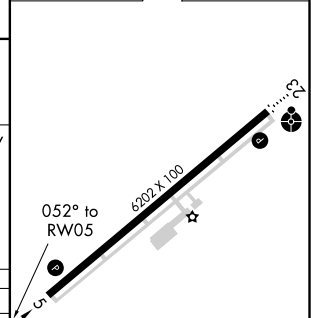
MISSED APPROACH: Climb to 3000 direct GELME and hold.

AWOS-3 119.975	MEMPHIS CENTER 133.65 292.15	UNICOM 122.7 (CTAF) 0
--------------------------	--	---------------------------------



ELEV 577	TDZE 577
----------	----------

CATEGORY	A	B	C	D
LPV DA	827- $\frac{7}{8}$		250 (300- $\frac{7}{8}$)	
LNAV/VNAV DA	871-1		294 (300-1)	
LNAV MDA	960-1	383 (400-1)	960-1 $\frac{1}{8}$	383 (400-1 $\frac{1}{8}$)
C CIRCLING	1000-1 423 (500-1)	1040-1 463 (500-1)	1040-1 $\frac{1}{2}$ 463 (500-1 $\frac{1}{2}$)	1180-2 603 (700-2)



MIRL Rwy 5-23 0	REIL Rwy 5 0
-----------------	--------------

SE-1, 15 JUL 2021 to 12 AUG 2021

SE-1, 15 JUL 2021 to 12 AUG 2021