

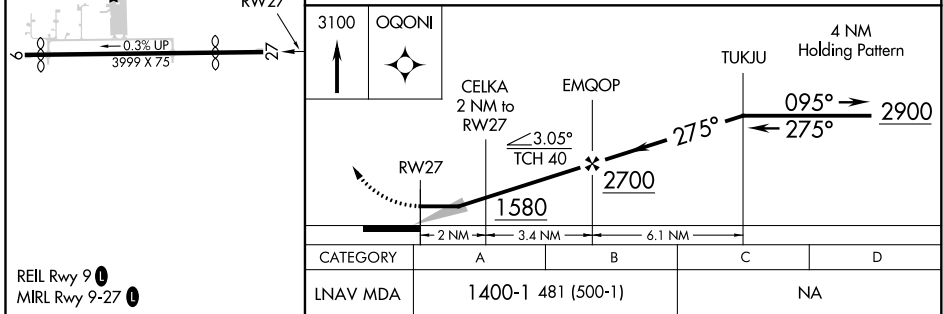
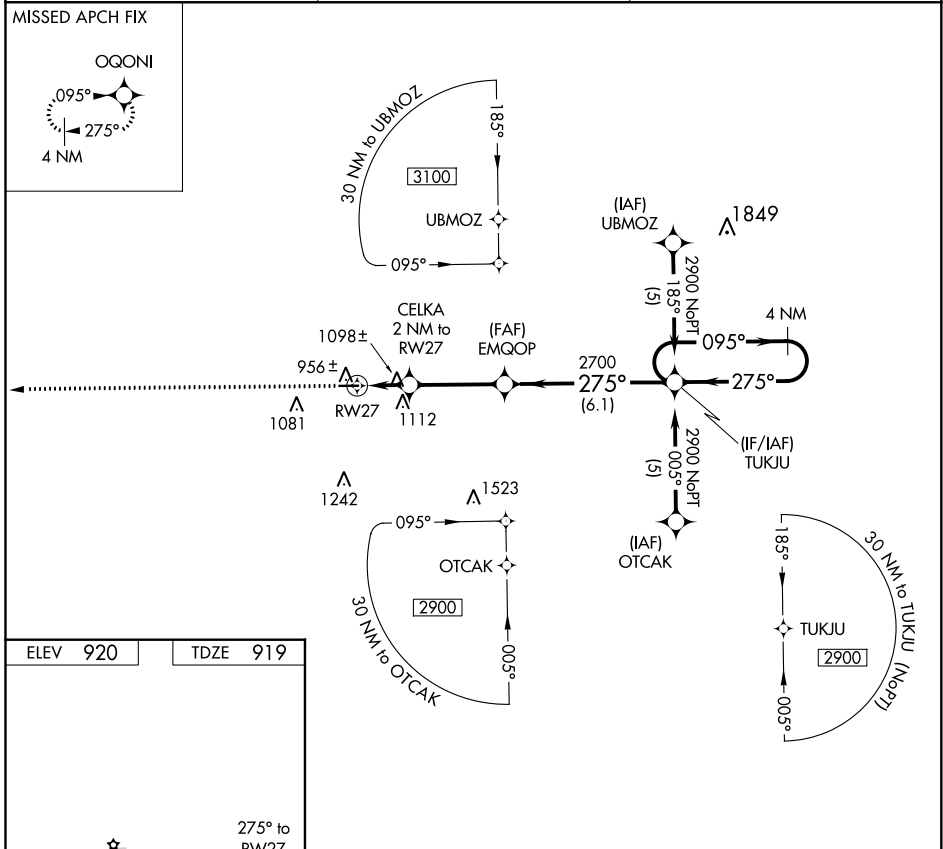
APP CRS	Rwy Idg	<b>3199</b>
<b>275°</b>	TDZE	<b>919</b>
	Apt Elev	<b>920</b>

# RNAV (GPS) RWY 27

PRICES (9G2)

RNP APCH.	MISSED APPROACH: Climb to 3100 direct OQONI and hold.
<p>▼ Use Flint altimeter setting; when not received, use Howell altimeter setting.</p> <p>▲ NA Procedure NA at night. Rwy 27 helicopter visibility reduction below 1 SM NA.</p>	

FNT ASOS <b>133.15</b>	GREAT LAKES APP CON ★ <b>128.55 257.9</b>	UNICOM <b>123.0 (CTAF) 0</b>
---------------------------	--	---------------------------------



EC-1, 15 JUL 2021 to 12 AUG 2021

EC-1, 15 JUL 2021 to 12 AUG 2021